



Adam Tas Corridor Energy

FC Rate Interface





Overview

Fibre Channel was designed as a serial interface to overcome limitations of the SCSI and HIPPI physical-layer parallel-signal copper wire interfaces. When the technology was originally devised, it ran over optical fiber cables only and, as such, was called "Fiber Channel". Two major characteristics of Fibre Channel networks are in-order delivery and lossless delivery of raw block data.



FC Rate Interface



Fibre Channel Protocol

Fibre Channel's FC-0 level describes/specifies the physical interface characteristics, including transmission media, transmitters and receivers, and their interfaces. The FC-0 level

Fibre Channel Overview

FC-4, the highest level in the FC structure defines the application interfaces that can execute over Fibre Channel. It specifies the mapping rules of upper layer



Fibre Channel Interfaces

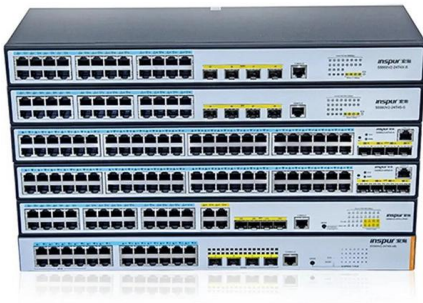
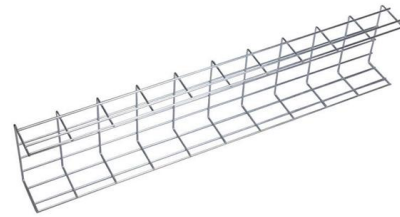
Interconnect devices, such as hubs and switches route Fibre Channel frames at gigabit rates. Translation devices - such as host bus adapters, routers, adapters, gateways and bridges - are the

What Is the Rate of an FC Interface of a CE Series Switch

When the 2G FC optical module is used, the rate can be 2000 Mbit/s. In non-auto-negotiation



mode, if interfaces on two connected devices work at different rates, use the speed

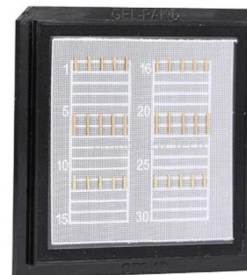


Cisco MDS 9000 Series Interfaces Configuration Guide, Release 8.x

Forward Error Correction (FEC) allows you to send frames in a way that the receiver can detect and correct errors without the need of retransmitting the frames if there are any errors in the

FX eTrader

The best trading robot compatible with a wide range of brokers for crypto, stock, and Forex trading. With an impressive success rate of nearly 93%, it exudes



INCITS T11

The data storage needs of enterprises continue to grow, and T11 is keeping pace, developing increasingly higher Fibre Channel data rates. Within the T11 working group, CommScope actively



Overview of Fibre Channel , Junos OS , Juniper Networks

Fibre Channel (FC) is a high-speed network technology that interconnects network elements and allows them to communicate with one another. The International Committee for Information Technology



FCP (Fibre Channel Protocol)

The Fibre Channel protocol, also known as FC, is a method for transferring data serially over copper or optical fiber in order to achieve lower

Fibre Channel Protocol

o Fibre Channel's FC-0 level describes/specifies the physical interface characteristics, including transmission media, transmitters and receivers, and their interfaces. The FC-0 level



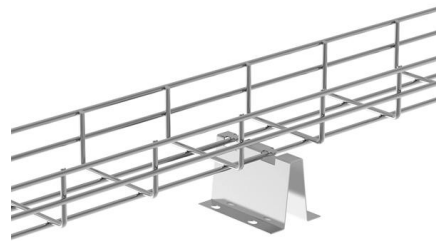
SAP Help Portal , SAP Online Help

SAP Build Process Automation combines workflow management and robotic process automation with a no-code experience for efficient business process automation.



128GFC: A Preview of the New Fibre Channel Speed

Modulation refers to the signal levels that are on the "wire" (physical interface) whether optical or electrical. The optical and electrical encoding and "wire" rate are the same. 128GFC uses PAM4.



List of interface bit rates

List of interface bit rates. This is a list of interface bit rates, a measure of information transfer rates, or digital bandwidth capacity, at which digital interfaces in a computer or network can communicate.

SAP Help Portal

Hier sollte eine Beschreibung angezeigt werden, diese Seite lässt dies jedoch nicht zu.



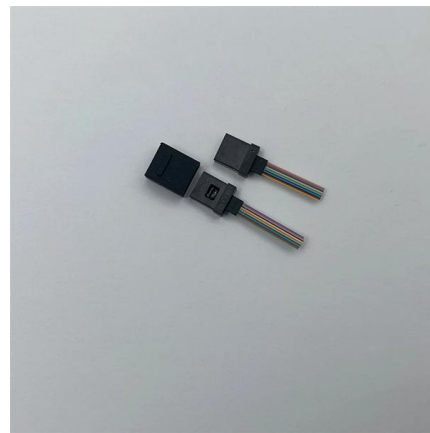


Understanding Fibre Channel , Junos OS , Juniper Networks

An FC switch is a Layer 3 network switch that is compatible with the FC protocol, forwards FC traffic, and provides FC services to the components of the FC fabric.

Cisco MDS 9000 Series Interfaces Configuration Guide, Release 8.x

Out-of-Service Interfaces On supported modules and fabric switches, you might need to allocate all the shared resources for one or more interfaces to another interface in the port group or



Dev Container CLI

Dev Container CLI This topic covers the development container command-line interface (dev container CLI), which allows you to build and manage development containers, and is a companion to the

What Is the Rate of an FC Interface of a CE Series Switch?

In non-auto-negotiation mode, if interfaces on two connected devices work at different rates, use the speed command to change the rates of the interfaces to be the same so that the two devices can



Support

When you use a VFC interface to transmit packets, the Ethernet interface bound to the VFC interface might allow multiple VLANs. You must enable FCoE for each of these VLANs and map each VLAN to

What Is Fibre Channel? , Enterprise Storage Forum

Fibre Channel vs. SCSI SCSI is a standard interface used for computer-to-storage connectivity, but has limits related to local area network



DS90UB935-Q1: How to calculate the speed of FC?

In Non-Synchronous Clock Mode mode, why is the FPD-Link III forward channel rate 3 Gbps in the case of an external crystal oscillator of



Get started with Azure Command-Line Interface (CLI)

Learn how to get started with Azure CLI to manage Azure resources efficiently. This guide covers sign-in, essential commands, tab completion, and interactive mode.



Enabling Claude Code to work more autonomously

We're introducing several upgrades to Claude Code: a native VS Code extension, version 2.0 of our terminal interface, and checkpoints for

Entering Exchange Rates

Entering Exchange Rates Financial Consolidation and Close provides the ability to enter direct exchange rates, indirect exchange rates and cross-rates. It is recommended that only direct rates be



Configuring Fibre Channel Interfaces

Fibre Channel over Ethernet (FCoE) encapsulation allows a physical Ethernet cable to simultaneously carry Fibre Channel and Ethernet traffic. In Cisco Nexus 5000 Series switches, an



Contact Us

For datasheets, pricing, or custom telecom energy solutions, please visit:
<https://www.koskolong.co.za>