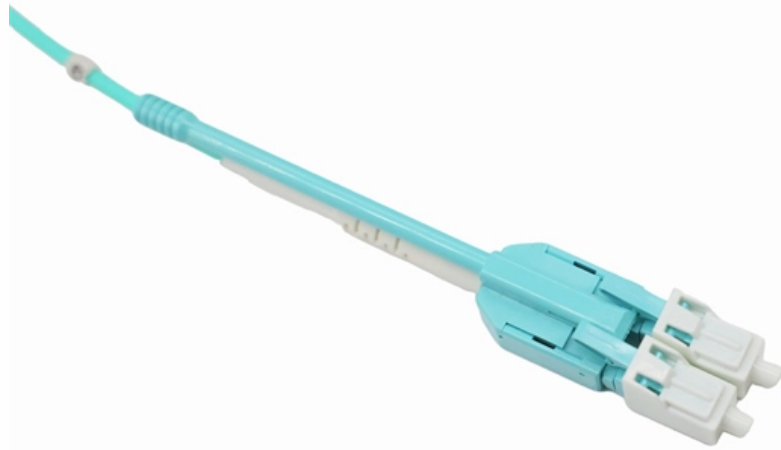




Adam Tas Corridor Energy

FDDI Connector Low Noise





FDDI Connector Low Noise



What Is FDDI (Fiber Distributed Data Interface)?

Fiber Distributed Data Interface (FDDI) is a set of ANSI and ISO standards for data transmission on fiber optic lines in a local area network (LAN) extending up to 200 kilometers. The

FDDI / CDDI (ANSI X3T9.5)

FDDI also permits extended dialogues, where stations may temporarily use all asynchronous bandwidth. The FDDI priority mechanism can essentially lock out stations that cannot use synchronous



Filtering Noise: The Crucial Role of Filtered and EMI

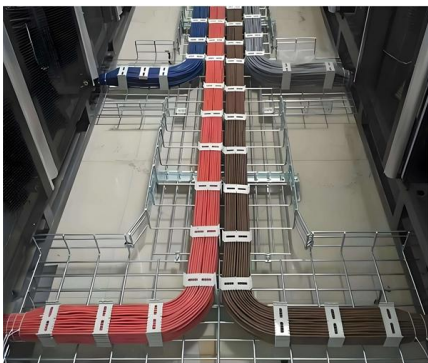
These connectors integrate EMI filtering directly into the connector, serving as a frontline defense against conducted EMI. By incorporating capacitors

fddi

One of the unique characteristics of FDDI is that multiple ways actually exist by which to connect FDDI devices. FDDI defines four types of devices:



single-attachment station (SAS), dual-attachment



FDDI Connectors & Single-mode Plastic Plugs , CAZN Supplier

CAZN is a leading supplier and manufacturer of FDDI connectors, including single-mode plastic plugs. Discover high-quality, reliable networking solutions here

What is FDDI (Fiber Distributed Data Interface)?

FDDI-II is a version of FDDI that adds the capability to add circuit-switched service to a network so that voice and video signals can also be handled. Work is underway to connect FDDI



Fiber Optic Connector FDDI

The Molex family of FDDI connectors utilize pre-polished and pre-radiused ferrules. When combined with the unique Molex termination process, these connectors





Minimize Noise and Ripple with a Low-noise Buck Converter

By integrating features that mitigate system noise and ripple, low-noise buck converters can help engineers achieve a low-noise power-supply solution without the need for an LDO.



FDDI, 100 Mbps ATM, and Fast Ethernet Transceivers in Low

The HFBR-5100 family of transceivers from Hewlett-Packard provide the system designer with products to implement a range of FDDI and ATM (Asynchronous Transfer Mode) designs at the 100

Overview 1

Port Adapter Overview The PA-F, shown in Figure 1-1 and Figure 1-2, provides a half-duplex FDDI connection for both single-mode and multimode fiber-optic cable. The two physical ports (PHYA and



Fiber Distributed Data Interface

As an alternative to using a dual-attached connection, a workstation can obtain the same degree of resilience through a dual-homed connection made



FDDI Optical Fiber Connector

FDDI (Fiber Distributed Data Interface) connector is a duplex optical fiber connector using two 2.5mm ferrules and has a fixed housing over the ferrules to protect the ferrules from damage. FDDI



Chapter 10: Fiber Distributed Data Interface (FDDI)

Overview In this chapter we present an overview of a network technology called Fiber Distributed Data Interface or FDDI. Learn more about Chapter 10: Fiber

FDDI CONNECTOR

The Molex family of FDDI connectors utilize pre-polished and pre-radiused ferrules. When combined with the unique Molex termination process, these connectors produce quick and



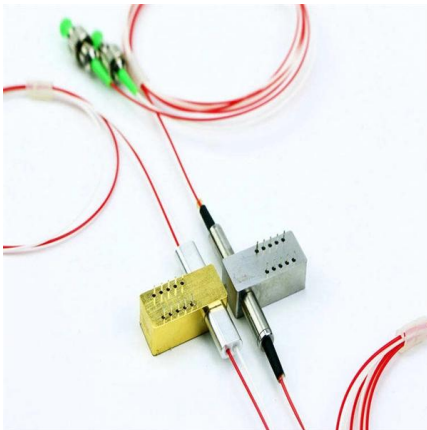


CONNECTORS & ADAPTORS

FDDI INTERCONNECTION SYSTEM Taking advantage of the first network standard, designed from start to finish for fibre optics, the AMP Fixed Shroud Duplex (FSD) System offers the components

FDDI Connectors & Single-mode Plastic Plugs , CAZN Supplier

CAZN is a leading supplier and manufacturer of FDDI connectors, including single-mode plastic plugs. Discover high-quality, reliable networking solutions here.



FDDI Fiber Optic Connectors

List of FDDI Fiber Optic Connectors Product Specs, Datasheets, Manufacturers & Suppliers

FDDI Connectors & Adapters

FDDI to ST* Flange mount or snap mount Zirconia or polymer alignment sleeves since local area networks. This high-speed, 100 megabit per second standard is called the Fiber Distributed Data



Fiber Distributed Data Interface (FDDI)

The FDDI specifications define a family of standards for 100 Mbps fiber optic LANs that provide the physical layers and media access control sublayer of the data link layer, as defined by the ISO/OSI



ANSI Fiber Distributed Data Interface (FDDI) Standards

The FDDI Station Management (SMT) specification describes software-based, low-level data link management and integrated network control functions of all stations attached to an FDDI LAN and of



What is FDDI? , FS Community

High Signal Integrity: Since FDDI uses fiber optic cables, it is immune to common sources of interference like electromagnetic interference (EMI) and radio frequency interference



Troubleshooting Fiber Distributed Data Interface

Although FDDI implementations are not as common as Ethernet or Token Ring, FDDI has gained a substantial following that continues to increase as the cost of



Contact Us

For datasheets, pricing, or custom telecom energy solutions, please visit:
<https://www.koskolong.co.za>