



Adam Tas Corridor Energy

FTTR uses a 40G fiber optic Ethernet switch





Overview

ZTE FTTR uses the all-optical gateway for home networking over optical fibers. Fibre-to-the-room (FTTR) delivers Gigabit optical capacity directly to each room in a building, providing very high-speed, reliable internet. When migrating to a 40G or 100G network, choosing the right transmission media is crucial to meet your desired transmission speed and distance. 40G Ethernet supports three main media options: Copper cables are suitable for short transmission distances.



FTTR uses a 40G fiber optic Ethernet switch



Fiber To The Room (FTTR), What should you know?

Full coverage upstairs and downstairs Whole-house smart gigabit fiber (FTTR) uses the 10 Gigabit OTN 1-to-N mode. Whether in the hallway or the

FTTO & FTTR: TECHNOLOGIES FOR FUTURE NETWORK

Introduction Fibre optic technology has transformed telecommunications by offering high-speed, reliable, and scalable solutions for modern data transmission needs. Two emerging technologies, Fibre to the



FTTR Complete Guide 2026 , Fiber to the Room Explained

A complete guide to FTTR (Fiber to the Room) technology in 2026. Learn how FTTR extends fiber optic connectivity to every room, enabling WiFi 7, multi-gigabit speeds, and seamless whole-home

What is FTTR? Can It Really Deliver Gigabit Networks

FTTR, as an emerging home network solution, uses fiber optics to deliver high-speed, stable



gigabit connectivity to every room in the home.
Despite challenges



What Is FTTH: A Beginner's Guide to Fiber to the Home

The Reliability of an All-Fiber Method Since FTTH fiber optic delivery uses fiber all the way to your home, the connection is immune to electromagnetic

ZTE FTTR-B SME Network Solution , PDF , Fiber Optic

Integrated, and Intelligent ----ZTE FTTR-B SME Solution Traditional Ethernet switch networks face problems of have many complicated devices, difficult to upgrade



What is FTTR? Can It Really Deliver Gigabit Networks

In these scenarios, FTTR provides the reliable, high-quality network required for demanding applications. FTTR, as an emerging home network solution, uses



What is FTTR (Fiber to the Room)?

FTTR is a new coverage mode of the home network in the gigabit era and is also another technological evolution and upgrade of home networking. In



GSTP-FTTR Use cases and requirements of fibre-to-the-room (FTTR)

Fibre-to-the-room (FTTR) is a new kind of in-premises networking technology which is based on optical fibre communication. With the benefit of optical fibre, FTTR will provide high-bandwidth and reliable

FTTR (Fiber To The Room) is a new networking mode in the gigabit

ZTE FTTR uses the all-optical gateway for home networking over optical fibers. It supports expansion to one main ONT +16 room ONTs, and works with the self-developed intelligent roaming algorithm to



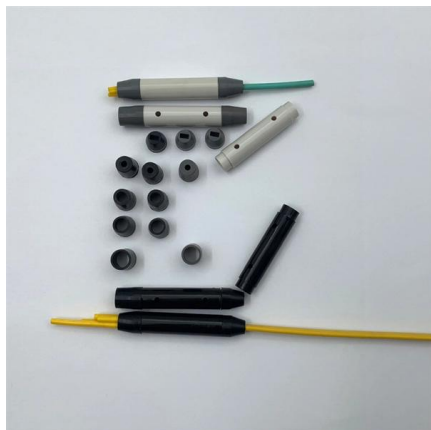
FTTO & FTTR: TECHNOLOGIES FOR FUTURE NETWORK

FTTR extends fibre optic technology into individual rooms within a home or other spaces, such as hotels or large residential buildings. The system works similarly to FTTO but is designed for smaller-scale



FTTR Network: The Ultimate Solution for Home Gigabit

The FTTR master gateway is connected to the OLT in the uplink and to multiple slave optical routers in the downlink through optical fibers and optical splitters.

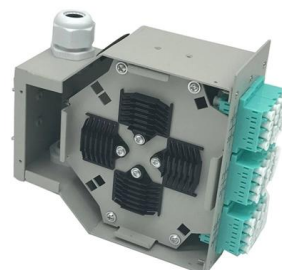


Huawei FTTR for Home , FTTR-B Solution , Fiber to the

Huawei's fiber to the room (FTTR) solution extends fibers to rooms and provides various gigabit Wi-Fi 6 master/slave FTTR units, all-optical components, and

FTTR vs FTTH: Key Differences in Home Fiber Networks

In the era of 5G, 8K video, and smart homes, reliable high-speed internet has transitioned from a luxury to a necessity. Two key fiber optic technologies--Fiber to the Home (FTTH) and Fiber





What is ftttr, and its advantages?

FTTR is fiber to the room based on fttb and fttth, and extended to every room with ONU, 1x5 splitter, router and PON devices.

Fiber to the Room (FTTR): A Solution for Indoor

Even FTTH PON (Fiber To The Home Passive Optical Network) cannot meet all the demands of today's user, especially with WiFi networks. The question then



40G QSFP+ Optical Transceivers Complete Guide

How 40G QSFP+ optical transceivers boost performance in data centers and telecom networks. Learn about types, use cases, and cost-saving benefits.

Seamless Ethernet Migration to 40G/100G with

Discover how to optimize Ethernet migration to 40G/100G networks with multimode fiber, transmission media, and fiber optic transceivers. Learn the



FTTR (Fiber to the Room): How It Changes Home

Enter FTTR (Fiber to the Room) -- a next-generation home networking standard that extends optical fiber directly into each room, offering

What is FTTR?

Unlike FTTH (Fiber to the Home), the traditional FTTH solution, FTTR, economically connects a master ONU (Optical Network Unit) with multiple slave



FTTR vs Ethernet: A Smart Home Networking Showdown

Compare FTTR vs Ethernet cabling for modern homes. Learn about speed, installation, cost, and future-proofing, plus FAQs to answer common



40G QSFP+ Fiber Optic Transceiver Selection Guide

Demand for higher bandwidth has never stopped. Along with the IEEE 802.3ba 40Gbps Ethernet standard published in 2010, 40G QSFP+ (Quad Small



FTTR (Fiber to the Room): How It Changes Home

Instead of terminating fiber at the household gateway, FTTR extends dedicated optical fiber connections into every room within a home or apartment.

Fibre-to-the-room (FTTR) technology , Prysmian

FTTR addresses challenges related to restricted speeds within buildings, providing uninterrupted, reliable high-speed internet indoors. It replaces traditional copper



Fiber to The Room (FTTR) Solution

Huawei's fiber to the room (FTTR) solution extends fibers to rooms and provides various gigabit Wi-Fi 6 master/slave FTTR units, all-optical components, and optical cable construction tools, enabling users



Corning Fiber to the Room Networks

These devices then link to edge switches in the IDF closets and are most commonly aggregated in the closet and/or home run to the core via single mode or multi-mode fiber to the



Contact Us

For datasheets, pricing, or custom telecom energy solutions, please visit:
<https://www.koskolong.co.za>