



Adam Tas Corridor Energy

Fiber Optic Connection Settings for Array Cabinet





Fiber Optic Connection Settings for Array Cabinet



144 Cores Floor Mount Fiber Optic Distribution Cabinet

Cross Connection Distribution Cabinet is designed for a cross connection between telecom feeder cable and customer cable. It is normally in a floor standing or occasionally wallmounted way to be placed

Fiber Array Unit (FAU) Series

An FAU can be put inside a reconfigurable optical add-drop multiplexer (ROADM) and function as an optical transmission for the wavelength selective switch (WSS) to switch traffic



Deciphering FTTH Telecommunication Cabinets

Learn about FTTH Telecom Cabinets: Connecting the World with Fiber Optics. Explore how they revolutionize global connectivity.



Considerations in the Selection of Enterprise & Data Center Fiber

As fiber optic technology began to play a more significant role in the SCS, the importance of



fiber connectivity products, including fiber patching and splicing products has increased. Traditionally,



Complete Guide to Fiber Optic Home Networking

Complete Guide to Fiber Optic Home Networking
Fiber optic networks are the backbone of the internet's future. Unlike traditional copper-based

Hyperoptic , Full Fibre Optic Broadband Provider

Hyper Fast & Hyper Reliable Full Fibre Broadband. Accelerate with equally fast upload and download speeds on our 150 Mb to 1Gb packages. Check out our



Fiber Internet Installation: Step-by-Step Guide (2026)

Get fiber internet installation done right for your home or business. Enjoy lightning-fast speeds and stable connections with professional setup.



How to Properly Connect Two Fiber Optic Cables Inside a Cabinet

Learn how to correctly connect two terminated fiber optic cables inside a cabinet using patch cords, adapters, and couplers. Step-by-step instructions for FTTH



Fiber Optic Internet Installation Guide: Steps for Installing Fiber

Learn how fiber optic internet installation works, from network planning to internal ONT setup. Discover step-by-step guidance for installing fiber optic cable and choosing reliable fiber optic

The Complete Optical Server Rack Cabinet Installation

In this beginner's server rack cabinet installation guide, we'll walk you through each step of the installation process, explain what tools you need, and



Fiber Optic Cross Connect Cabinet For Outdoor Network

Fibconet fiber optic cross connect cabinet specifically designed for outdoor optical fiber access networks equipped with a built-in rack for storing.



What is an Optical Fiber Array?

Optical fiber arrays are devices needed for realizing high-speed, large-capacity optical communication systems. High-speed, large-capacity optical



How to Arrange Optical Fiber Optic Patch Cords in the

Effectively arranging optical fiber optic patch cords in a cabinet is a critical aspect of maintaining a streamlined and organized network infrastructure.

Be Your Own Technician: DIY Fiber Optic Installation Guide

This comprehensive guide equips you to be your own technician, exploring the intricacies of fiber optic technology, the steps involved in the installation process, the tools required, and





Understanding Fiber Deployment

Understanding Fiber Deployment: Cabinets - Active or Passive ? As fiber optic networks continue to expand, service providers must carefully consider how to deploy infrastructure efficiently while

Current Installation Manuals for Fiber Optic Products , Clearfield

Have any questions? Talk with us directly using LiveChat.



How to Arrange Optical Fiber Optic Patch Cords in the

In this context, a well-thought-out strategy for organizing optical fiber optic patch cords within the cabinet is essential to promote efficiency,



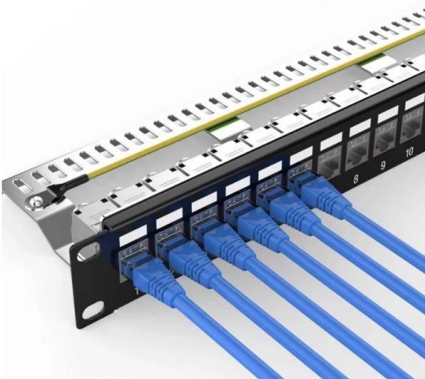
Best Practices for Ensuring Polarity of Array-Based Fiber Optic Channels

The objective of polarity is simple: provide transmit-to-receive connections across the entire fiber optic system in a consistent, standards-based manner. Ensuring the polarity of array-based systems



Fiber Optic Hardware , Fiber Panels, Housings, Racks, and

Fiber Optic Hardware Corning has a wide variety of hardware solutions to choose from to fit your cabling needs. Choose from racks, panels, modules, splice trays, ethernet fiber switches and other



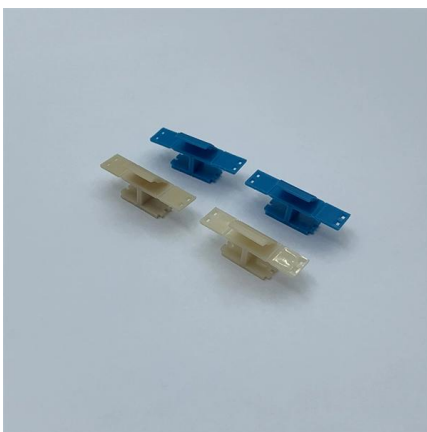
How to Install a Fiber Distribution Cabinet (Step-by-Step Guide)

Learn how to install a fiber distribution cabinet step by step, including mounting, cable routing, grounding, and testing for FTTH networks.



15 BEST PRACTICES FOR DATA CENTER FIBER-OPTIC CABLING

For fiber optic cable, use horizontal finger style with front cover cable managers in a 1U or 2U footprint. Consider wide body cabinets (wider than 24 inches) along with vertical cable managers (4", 6" or 12"





Fiber Optic Cabinets , Fiber Enclosures , Multilink

Fiber Distribution Hubs Multilink's Fiber Distribution Hubs are setting the standard for cross-connect configurations, configurable splitting, plug-and-play technologies and many other fiber architects. Our



How to Setup a Fiber Optic Home Network for MAXIMUM SPEED!

Beginner's introduction and guide on how to install and set up a Fiber Optic network cable in your home or office. Future-proof your setup, increase bandwidth and get faster, more reliable

An Introduction of FTTC (Fiber to the Cabinet)

Since the connection between the cabinet and the switch is via fiber, the FTTC connection will give you faster speeds than an ADSL line. Drawbacks of FTTC



Key Considerations for Fiber Optic Distribution Cabinets

When selecting a fiber optic distribution cabinet, it's crucial to consider several key factors that will ensure optimal performance and longevity. These cabinets serve as a vital component in



Key Considerations for Fiber Optic Distribution Cabinets

These cabinets serve as a vital component in managing fiber optic networks, housing splice trays, connectors, and patch panels. Below, we will explore the essential considerations you

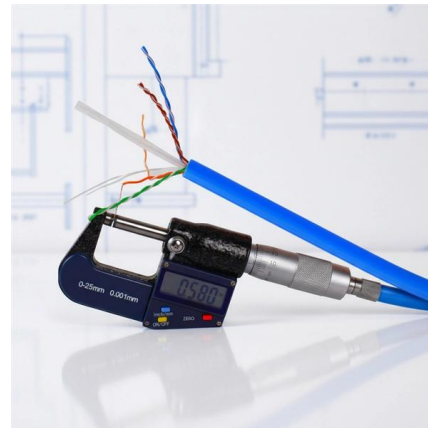


Understanding FTTH Cabinets: Key Benefits and Installation Guide

In summary, understanding FTTH cabinets is fundamental for anyone interested in leveraging the benefits of fiber-optic technology. Their ability to provide high-speed, reliable internet

CHAPTER 4

The Ethernet connection enables you to configure and monitor RAID arrays and expansion units remotely by using the telnet command to access the firmware



Contact Us

For datasheets, pricing, or custom telecom energy solutions, please visit:
<https://www.koskolong.co.za>