



Adam Tas Corridor Energy

Fire control cable from the distribution box





Fire control cable from the distribution box



Fire System Cables

This document lists the cables that are approved for use with Advanced Fire Alarm Control Panels. The document covers standard and enhanced fire rated cables for sounder circuits, detector loop and

Electrical installation handbook Protection, control and

The scope of this electrical installation handbook is to provide the designer and user of electrical plants with a quick reference, immediate-use working tool. This is not intended to be a theoretical



Wiring a Fire Alarm System: A Comprehensive Guide to

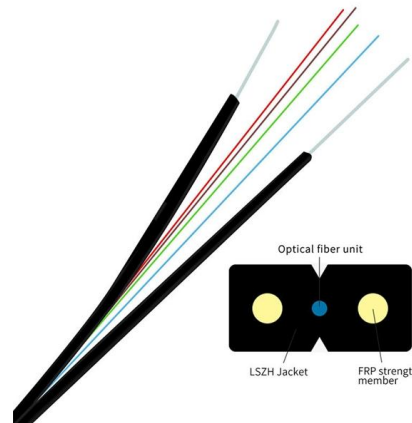
Plenum Rated Cables (FPLP): If you're running cables in an "air-handling space" (like the space above a drop ceiling that's used for air return),

Cable for Fire Alarm System: A Comprehensive Guide to Choosing

This might involve selecting cables with a slightly higher conductor count than immediately



necessary or opting for pathways that can accommodate additional cables if system requirements



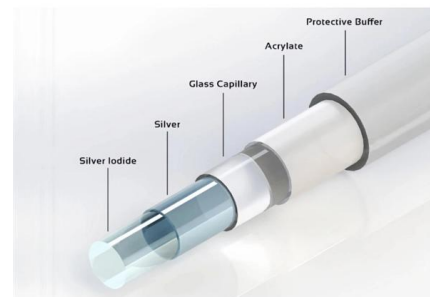
Fire protection cable boxes: Spelsberg

As a leading manufacturer of high-quality cable junction and connection boxes, as well as durable surface-mounted distribution boards, Spelsberg is especially well-qualified for development of fire



Fire Alarm and Emergency cables Installation method

1.0 PURPOSE: This method statement is applicable for installing the fire resistance cables and devices for the fire alarm system and Emergency lighting system



Cabling/Wiring Rules - Fire Secure UK

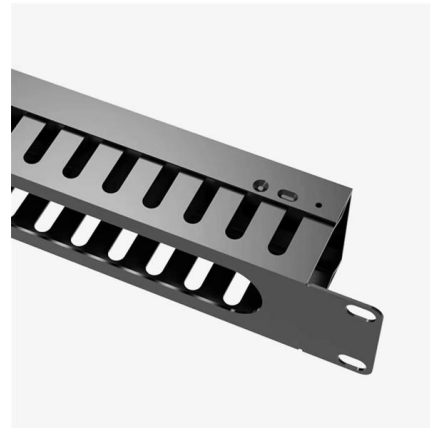
Access control and intruder cabling should be segregated from mains to reduce interference and prevent induced voltages. CCTV coax and Cat6 runs should be routed separately from mains unless screened.





ECU Fire Protection System for Distribution Boards

To protect against overheated ECUs, we've manufactured an ECU fire protection system consisting of an ECU cover housed with intumescent lining. The flexible



Fire protection cable boxes: Spelsberg

All WKE cable junction boxes and junction boxes as well as the WKE AK distribution boards offer electrical intrinsic fire resistance between 30 and 90 minutes (E30 to E90) in the event of fire.

TSA_UM003 Electrical Distribution V2

Appropriate fire-fighting equipment should be available in the immediate area. The electrical supply from the main inlet to all of the factory areas is achieved through a distribution network with distribution



Cable list and Wiring Connection Diagram for A

Creating a cable list and wiring connection diagram for firefighting enclosure (both diesel and electric pumps) involves detailed planning to ensure



Alerton Fire/Life Safety Control Cable, Honeywell Building Automation

Alerton Fire/Life Safety Control Cables are 2 conductor bare copper wires which have low smoke PVC insulation. It is approved for plenum use without conduit per NFPA 262 flame test.



BS 7671 FAQs - Cables and Fire Protection

To prevent the spread of fire between fire segregated compartments, cables shall be installed in accordance with Section 527 of BS 7671:2018.

Fire protection guide for electrical installations

On the other, the materials used to route and fasten electrical installations and cable insulation are usually combustible. For this reason, electrical in-stallations require special consideration for fire





Mains power supplies to fire systems



The box in which the joint is made shall be clearly labelled "FIRE ALARM". Cables which pass through walls, floors, and surface cables below 2m

Detecting Tube Fire System Use for Power Distribution

Many computer electrical cabinets, power distribution cabinets, control boxes, and other similar cabinet spaces at home and abroad utilize this fire



NFPA 2 Hour Fire-Rated Cable Code Requirements

All cables for fire alarm, security, signaling systems, and emergency communications shall be shielded twisted pair cables or installed to comply with the performance requirements of the system.

Fire Alarm System Cables: Requirements and Best Practices

Detailed guide to fire alarm system cables requirements: cable types, ratings, routing, separation, protection, and installation best practices for reliable fire alarm performance.



Fire protection enclosures

Interior: Prepared for installation of distribution panels and CombiLine-M modular distribution panels
Cable entry: Top, bottom or both
Ventilation system: Ventilation takes place via channels in the rear



Fire behaviour and construction safety precautions for

Cable tray type, ducts and conduits Although the type of cable and conductor is the determining factor in the fire behaviour of ducts and conduits, the



How a Fire-Rated Power Distribution System Reduces Risk

A fire-rated power distribution system helps reduce the risk of fires in data centers. While fires in these facilities may not be common, they can lead to





BS 7671 FAQs - Cables and Fire Protection

Explore expert-answered FAQs on cable types, flame propagation, containment, fire-rated installations and the fire-safety implications of BS 7671.



Fire Detection in Electrical Switchboards & Rooms

Early detection of fire in an electrical switchboard or rooms carrying power distribution, substations, electrical equipment or industrial controls may be

Ultimate Guide to Fire Retardant Cable Management: Ensure Safety

Discover the importance of fire retardant cable management, key components, installation techniques, and maintenance protocols in this comprehensive guide. Learn how to



About Fire Alarm Cable: Specifications, Standards, and

One of the most important elements of any fire alarm system is the cable used to power it. You know, if the fire alarm cable doesn't do its job, the whole system



Understanding Distribution Boxes: A Comprehensive Guide

A distribution box, also known as a power distribution box or electrical distribution box, is used to distribute electrical power safely to multiple



BS 8519:2020

Performance criteria for cable protective systems. Testing of Category 3 cables of core sizes up to and including 4 mm² cross-sectional area. Determining the cross-sectional area of drop rods. Example

Contact Us

For datasheets, pricing, or custom telecom energy solutions, please visit:
<https://www.koskolong.co.za>