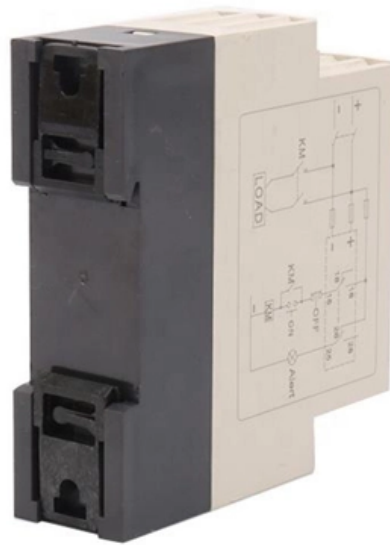




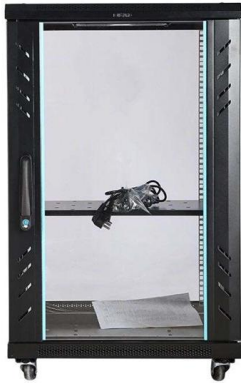
Adam Tas Corridor Energy

Fireproof Cable Tray Theoretical Weight Table





Fireproof Cable Tray Theoretical Weight Table

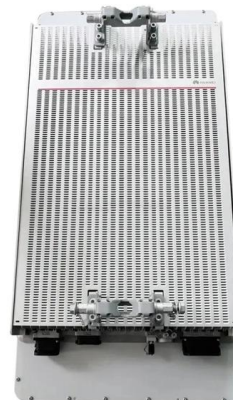


Cable Tray Technical Guide A practical guide to product selection and

In designing supports for a cable tray system, consideration should be given to the loads associated with future cable additions and any additional loading that may be applied to the cable tray system (e.g.,

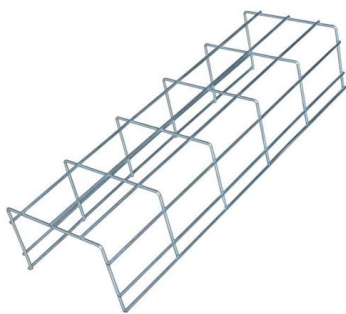
TECHNICAL AND SIZING DATA

Even though a 900 mm wide tray has six (6) times the volume of a 150 mm wide tray, it cannot carry any more cable weight. When piling cable in tray, the required air separation between cables can be



CABLE TRAY

Armorduct Systems' Cable Tray has achieved a E90 Fire Rating after carrying out testing in accordance with DIN 4102-12 at FIRES notified Technical Assessment Body (TAB), which is managed in

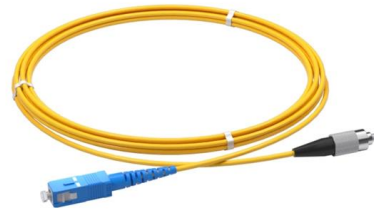


Cable Tray Fireproof Testing: What You Need To Know

Learn about cable tray fireproof testing. We explain the process, including mechanical and



fire tests. Find out why it's crucial for safety.



Cable Tray Weight Calculator

Compute tray weight from dimensions, thickness, and material density. Include covers, perforation, joints, and safety factor options. Download clear CSV and PDF reports for documentation.



Cable Tray Load Calculation Guide

This document provides guidelines for determining load factors that should be considered when designing support systems for Snap Track cable tray systems. It discusses dead loads, live loads,



Tray and Ladder Sizing by Cable Capacity Calculator - IEC

Common Tray and Ladder Sizes by Cable Capacity (IEC Reference) Below are industry-standard tray and ladder dimensions used globally, based on typical installations and in alignment with IEC



Technical Guidelines for Cable Tray Installation and

Cable tray installation must comply with specific technical standards to ensure electrical safety, system reliability, and long-term maintainability. This document



IEC Standard for Cable Tray: Complete Technical Guide

The IEC standard for cable tray recognizes multiple tray types depending on application and structure. Each type serves a different purpose in



AS/NZS3013:2005 FIRE RATED CABLE MANAGEMENT

We now have a NEW range of fire rated cantilever assemblies for cable ladder and ET3 cable tray; expanding your choice when it comes to supporting your cables. Refer to the handy comparison



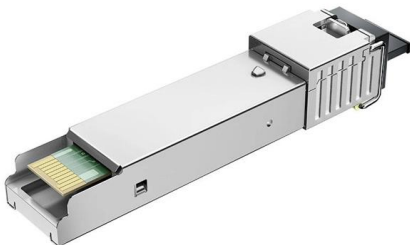
Power and Control Tray Cable

These cables may be used for: cable trays in accordance with NEC Article 318 (these cables meet the requirements of the 70,000 BTU/hr vertical tray flame test in UL 1277, IEEE 383 and the ICEA



Cable Trays and Fire Protection Systems: Keeping

Learn how Cable Trays and Fire Protection Systems work together. They protect cables and help fire alarms, sprinklers, and emergency systems

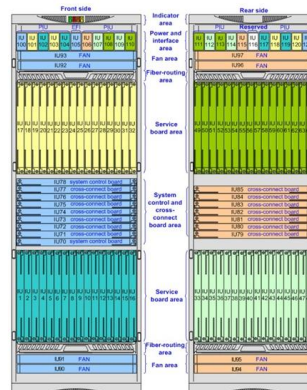


Suppression of cable tray fire in utility tunnel power compartments

These results provide actionable guidelines for optimizing fireproof clapboard design in cable trays, offering significant implications for enhancing fire safety in dense underground

Cable Tray Weight Calculator

Cable Tray Weight Calculator Estimate cable tray self weight quickly for planning and procurement accurately. Choose materials and sizes. Export results instantly for schedules, submittals, and field





TRAY CABLE

TRAY & POWER CABLES Description: Four copper conductors, stranded and insulated with heat and moisture resistant, chemically crosslinked polyethylene (type XHHW-2 or RW90), phase identified

Instrument FireMaster® fire protection cable tray

The FireMaster instrument control cable tray system is Factory Mutual Approved for 30 minute hydrocarbon fire protection of instrument control cable trays in accordance with ASTM E1725-95



Cable Tray Technical Guide A practical guide to product selection and

A practical guide to product selection and installation This guide for engineers and installers has been developed by ABB as a practical reference regarding cable tray characteristics, installation, and

Cable Tray SHIB NAL

Cable trays are not raceways, but they are treated as a structural component of a facility's electrical system. Cable trays are a part of a planned cable management system to support, route, protect and



Metal tray system Fire Resistance

The wire mesh tray was then loaded with chains to simulate the cable weight and other standard conditions of the test. During the test, a standardised temperature vs. time curve is imposed in the



FyreWrap® Cable Insulation

Unifrax's FyreWrap® Cable Insulation is a thin, flexible, insula-tion wrap designed to provide a fire-protective enclosure around cable trays and conduit. The FyreWrap system ensures electrical circuit



Cable Tray Load Calculation and Sizing: Your Easy Guide

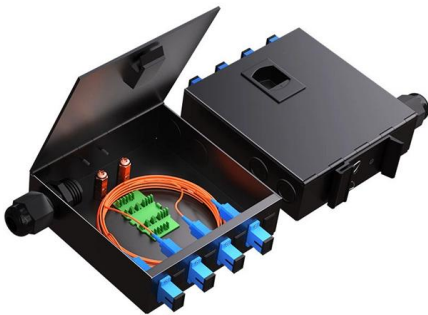
Worried about cable tray capacity? Learn simple cable tray load calculation steps. This guide helps you pick the right tray every time, keeping





Cable Tray Size and Weight Chart

It lists the cable types, sizes, and quantities for each area. It then calculates the total cable outside diameter, weight per meter, and total weight for each area. Finally,



Cable Tray Raceway Fill and Load Calculations

Wire Mesh Cable Tray Fill Ratio = Cross section of cable / Cross section of tray According to NEC 392.9 (B), when using ventilated tray with multi conductor

Raceway Cable Tray (Ducts) - Load Capacity

Simply put, load capacity is the maximum weight a raceway duct or cable tray can safely support without bending, sagging, or structurally failing. This gives you peace of mind that the system



Contact Us

For datasheets, pricing, or custom telecom energy solutions, please visit:
<https://www.koskolong.co.za>