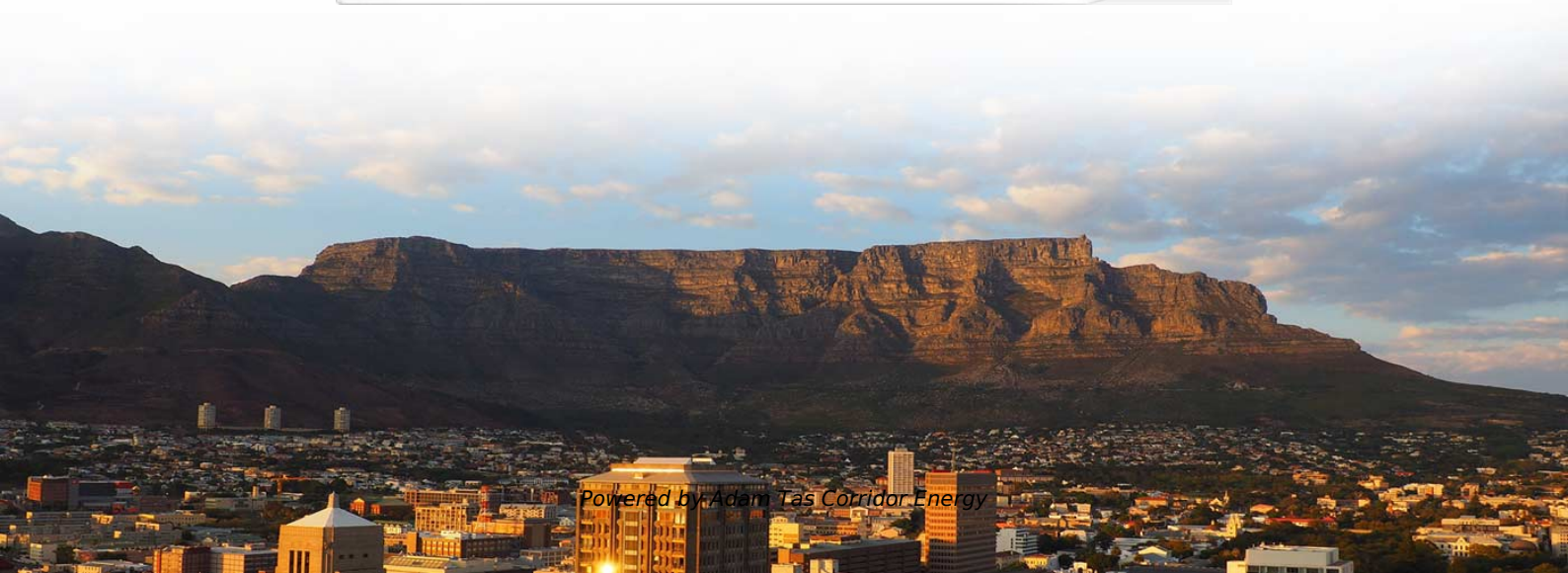




Adam Tas Corridor Energy

Fitness Standards for Optical Distribution Boxes





Overview

208 refers to a fibre distribution box (FDB) deployed as a passive optical node in indoor or outdoor environments. It is designed to meet the requirements of IEC 60754-1 and relevant standards over the range of optical wavelengths from 1260nm to 1625nm. Suppliers shall provide information on the likely change in performance over the life of the product. To ensure consistent performance and longevity, it is essential to adhere to strict technical specifications.



Fitness Standards for Optical Distribution Boxes



Optical distribution frames and patch panels

Supporting more fiber with lower cost and higher flexibility, Technetix offers a variety of wall, floor and rack-mounted optical distribution frames (ODF) and patch panels.

OPTICAL FIBER DISTRIBUTION FRAMES (ODF) AR-RODF-SO Series

6. OPTICAL AND ELECTRICS PROPERTY Nominal operating wavelength:850nm,1310nm,1550nm; Insertion loss (dB): ≤ 0.2 dB; Return loss (dB): PC type ≥ 45 dB, UPC type ≥ 50 dB, APC type ≥ 60 dB;



5-INCH COLOR TOUCHSCREEN

Intuitive operation, easily accessible with just one touch



13-SDMS-06 REV. 00 MATERIAL SPECIFICATION FOR PASSIVE OPTICAL

2 Applicable Codes and Standards This Distribution Material Standard Specification shall be read in conjunction with the latest revision of Distribution General Specification 01-SDMS-01 which shall be

Fiber Distribution Box.pub

Fiber Distribution box contains the shell, the internals (supporting frame, set fiber disc, fixing device) and optical fiber joint protective element.



Prominent advantages of fiber termination box lie in efficient



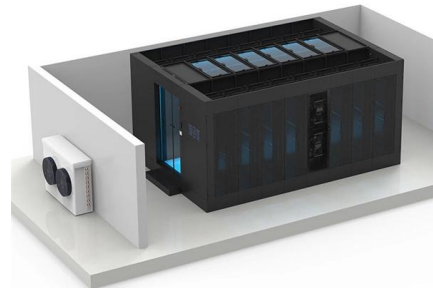
Basic of Optical Distribution Frame (ODF)

An optical distribution frame (ODF) is a frame used to provide cable interconnections between communication facilities, which can integrate fiber



Optical Cable Distribution Box in the Real World: 5 Uses You'll

Optical cable distribution boxes are essential components in modern telecommunications infrastructure. They serve as hubs where fiber optic cables are connected, managed, and distributed



How to Choose the Right Fiber Distribution Box for

A fiber distribution box (FDB) is a passive enclosure that provides secure splicing, termination, and distribution of optical fibers. It typically contains





What are the requirements for the optical fiber distribution box?

The operating environment requirements of an optical fiber distribution box include temperature, humidity, air pressure, altitude, dust proof, water proof, and no violent shock or shock.



Optical Distribution Frame (ODF): What It Is, How It Works, and Why It

An Optical Distribution Frame (ODF), also known as a fiber optic patch panel, is a specialized hardware unit that centralizes fiber optic cable connections. Acting as a "traffic hub" for light signals, an ODF:

Requirements for passive optical nodes- Fibre distribution box

This Recommendation provides the requirements of a fibre distribution box (FDB) and the means for characterization and evaluation of the performance of an FDB according to the principles



The Role of Fiber Optic Distribution Boxes in Optical Networks

Fiber optic distribution boxes, also known as fiber distribution hubs (FDHs), are a critical component in optical communication networks. They act as consolidation points, enabling efficient



Introduction to the Function and Specifications of the Optical Fiber

The optical fiber distribution box is suitable for the wiring connection between the optical cable and the optical communication equipment. Through the adapter in the distribution box, the optical signal is



ITU-T Rec. L.208 (08/2019) Requirements for passive optical nodes

Recommendation ITU-T L.208 refers to a fibre distribution box (FDB) deployed as a passive optical node in indoor or outdoor environments. It details the FDB housing, FDB fibre management system, cable

Fiber Optic Distribution Box Application and Research Report

This section systematically outlines the core technical specifications and the major certification requirements in global markets for optical distribution boxes.



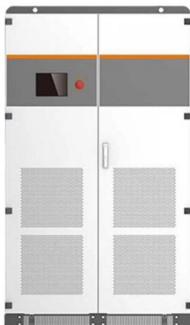


Basics of Fiber Optic Distribution Box

Fiber optic distribution box (FDB) is an important component to provide connection, distribution and management of fiber cables.

Optical Cable Distribution: Efficient How-To Guide

Learn how to efficiently manage and distribute optical cables using a fiber distribution box. Explore protective sheath and organized distribution.



Comprehensive Guide to Optical Distribution Frames

Conclusion Optical Distribution Frames (ODFs) are comprehensive solutions that can reduce costs and enhance reliability and flexibility of fiber optic networks during

The Technical Specifications for Fiber Distribution Boxes

To ensure consistent performance and longevity, it is essential to adhere to strict technical specifications. This article delves into the intricacies of



Optical Distribution Box (ODB) in FTTH Network

Optical Distribution Box (ODB) in FTTH Network: ODB used in FTTH network to provide an intermediate connection or interfacing point between telecom industry main fiber optic entrance



Standard for Installing and Testing Fiber Optics

Fibers in distribution cables are terminated directly, but the lack of protection for the fibers requires they be placed inside patch panels or wall-mounted boxes.



13-SDMS-06 REV. 00 MATERIAL SPECIFICATION FOR PASSIVE

This document specifies the minimum technical requirements for design, engineering, construction, manufacture, inspection, testing and performance of the passive components used to manage the





Fiber Optic Distribution Box Application and Research Report

This report discusses the application and research of the Fiber Optic Distribution Box (FDB), systematically explaining its basic concepts, functional structure, operating principles,



Optical Distribution Boxes - PPC Broadband , Product Catalog

Optical Distribution Boxes, 4 to 96 fiber termination, up to 96 fusion splices, indoor / outdoor, 1:2 to 1:32 splitting ratio, for FTTx applications up to 96 subscribers Optical Distribution Box 8 (ODB-8): This



ODF Optical Distribution Frame Spec Sheet

In many cases, the ODF racks will be deployed in small POP buildings alongside EQF frames where transmission equipment is mounted. These ODF's then provide the necessary connection from the



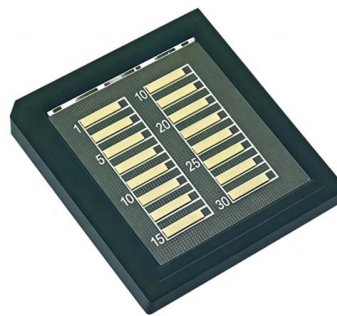
Optical Distribution Frame

Optical Distribution Frame The Optotec ODF is an ETSI all-purpose metal rack designed to reach maximum modularity and flexibility, and allow easy on-site assembly.



6 Must-Know Insights on Fiber Distribution Box

A Fiber Distribution Box (FDB) is a component used in fiber optic networks for power distribution and terminal connections. It serves as a junction



Technical requirements of Optical fiber distribution box

Designed and produced according to the communication industry standard YD/T 2150-2010, it integrates the introduction of optical cable (fixing,

Optical Distribution Frames Specifications

It defines optical distribution frames and shelves, splicing and patching trays, and requirements for capacity, cable entry, expandability, and performance testing.





Contact Us

For datasheets, pricing, or custom telecom energy solutions, please visit:
<https://www.koskolong.co.za>