



Adam Tas Corridor Energy

Gaoyou IEEE 1588 Industrial Ethernet Switch





Gaoyou IEEE 1588 Industrial Ethernet Switch

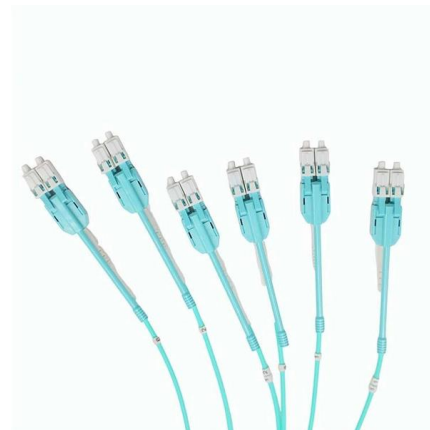


VCL-2739, 1588v2 PTP Aware Switch and PTP Transparent Clock

VCL-2739, 1588v2 PTP Aware Switch and PTP Transparent Clock is a non-blocking wire-speed Ethernet switch with full support for IEEE 1588v2 Precision Time Protocol (PTP) Transparent Clock

Industrial Ethernet Switches , EtherWAN

Are you in need of reliable and durable industrial Ethernet switches? Look no further than EtherWAN. We provide a wide range of options including managed switches, unmanaged switches, PoE



SyncE & IEEE 1588 PTP Switches

SyncE & IEEE 1588 PTP Switches Ethernet Direct offers the Industry's first switches to support Synchronous Ethernet (SyncE) and IEEE 1588 PTP protocols. SyncE and IEEE1588 PTP V2 are

Spider-HUB IEEE 1588 Industrial Network Switch

Designed and manufactured by Crystal Instruments, the Spider-HUB Industrial Ethernet



Switch supports the latest IEEE 1588v2 technology to fulfill precision



IEEE1588v2 Ethernet

IEEE1588v2 Ethernet Microchip's EtherSynch(TM) family of 1588v2 Ethernet switches and controllers offer highly-integrated, power-efficient solutions for major industrial Ethernet standards

Industrial Managed Switches with Precision Time Protocol (PTP)

To synchronize distributed clocks in industrial networks, the precision offered in popular methods such as Network Time Protocol (NTP) and Simple Network Time Protocol (SNTP) is not good enough.



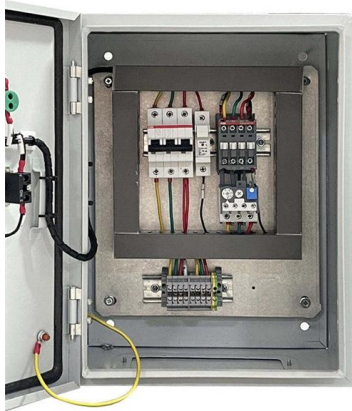
Industrial GbE Switch with SyncE, IEEE1588 v2 & PoE

The Gigabit Ethernet switch model is a managed industrial grade L2+ switches with 16 10/100/1000Base-T ports and 8 GbE/Fast SFP ports that provide stable and



IEEE1588 Precision Time Protocol-Enabled, Two-Port, 10/100 Mbps

The KSZ8462 EtherSynch® product line consists of IEEE 1588v2 enabled Ethernet switches, providing integrated communications and synchronization for a range of Industrial Ethernet applications.



FIDO2100 (Doc# IA211111101-04) Rev. C)

The fido2100 is a managed, 3-port Ethernet switch with support for IEEE-1588 and Device Level Ring (DLR) protocol. The fido2100 enhances the capabilities of Innovasic's line of Industrial

VCL-2739, 1588v2 PTP Aware Switch and PTP Transparent Clock

Get Data Sheet VCL-2739, 1588v2 PTP Aware Switch and PTP Transparent Clock is a non-blocking wire-speed Ethernet switch with full support for IEEE 1588v2 Precision Time Protocol (PTP)



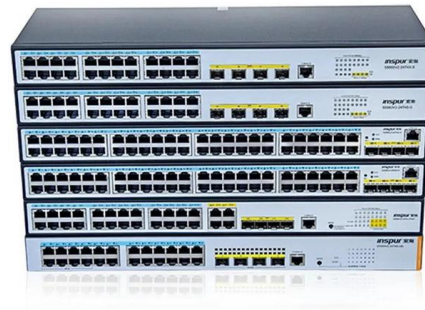
Spider-HUB IEEE 1588 Industrial Network Switch

Industrial Ethernet Switch with latest IEEE 1588v2 technology to fulfill precision time synchronization requirements for vibration testing.



Industrial Ethernet Guide

The following is part of A Comprehensive Guide to Industrial Ethernet by Wilfried Voss. Distributed applications in networked control environments require tight synchronization



50KW modular power converter



IGS-1608SM-SE

The IGS-1608SM-SE is a new Gigabit switch with high density of copper and SFP ports that guarantees reliable Ethernet transmission. The distinctive feature of this switch is a timing

KSZ8463 , Microchip Technology

The KSZ8463 EtherSynch ® product line consists of IEEE 1588v2 enabled





IEEE1588 Precision Time Protocol-Enabled, Two-Port, 10/100 Mbps

KSZ8462HLI/FHLI IEEE 1588 Precision Time Protocol-Enabled, Two-Port, 10/100 Mbps Ethernet Switch with 8- or 16-Bit Host Interface

Industrial Rackmount Ethernet Switch IEEE 1588

In our rackmount switches we implemented IEEE1588 Precision Time Protocol (PTPv2 Hardware timestamp) standard which precisely synchronizes distributed



GSW1xx Gigabit Ethernet Switch

IEEE 1588v2 support enables highly accurate precision timing protocol applications. The 1M Bits embedded packet storage SRAM is integrated with 9KB jumbo frame support. The GSW1xx device

Microchip Expands Industrial Ethernet Switch Portfolio With Enhanced

Featuring the IEEE 1588-2008 Precision Time-stamp Protocol (PTP) standard for clock accuracy in the sub-nanosecond range, these highly integrated Ethernet switches offload both



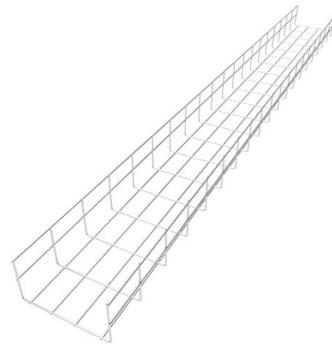
SyncE & IEEE 1588 PTP Switches

Ethernet Direct offers the Industry's first switches to support Synchronous Ethernet (SyncE) and IEEE 1588 PTP protocols. SyncE and IEEE1588 PTP V2 are increasingly applied in mobile backhaul



Digital Instruments

Overview Documentation Related Products The device is an IEEE 1588-2008 (PTP v2) and SyncE compliant 8-port Gigabit switch capable of acting as a Transparent Clock and, with aid of the



Managed GbE Switch with SyncE & IEEE 1588v2

8x 10/100/1000Base-T+ 4x 100/1000Base-X SFP with SyncE The IGS-804SM-SE & IGS-1608SM-SE series models are managed industrial grade gigabit switches with 8/16 10/100/1000Base-T ports and





Industrial Ethernet

PLANET Industrial Ethernet equipment is compliant with various industrial protocols and ITS certifications such as MQTT, Modbus, SCADA, EtherCAT EN50155 and E-Mark to meet all the



Microsemi Products , Microchip Technology

Microsemi Corporation offered a comprehensive portfolio of semiconductor and system solutions for communications, defense and security, aerospace and

Industrial Ethernet Switches , EtherWAN

Industrial Ethernet Switches Are you in need of reliable and durable industrial Ethernet switches? Look no further than EtherWAN. We provide a wide range of options including managed switches,



Compact Gigabit IEEE 1588 Ethernet switches for

Siemens is expanding its Ruggedcom portfolio with two new compact Ethernet switches. The Ruggedcom RSG907R and the Ruggedcom RSG909R compact



Contact Us

For datasheets, pricing, or custom telecom energy solutions, please visit:
<https://www.koskolong.co.za>