



Adam Tas Corridor Energy

Georgia 100g Single-Mode Optical Module





Georgia 100g Single-Mode Optical Module



100G QSFP28 Single Fiber (BiDi) Modules: Technology, Benefits

Understand 100G QSFP28 single fiber (BiDi) modules--how they work, benefits vs. duplex 100G, deployment considerations, and recommended LINK-PP solutions. Practical guide for

Optical Converter Module 100Gbps 100G-10KM-OLT

The 100G-10KM-OLT-QSFP28 Converter Module is designed to operate in high-performance networks, supporting transfer rates of 100 Gbps using a single-mode



Differences and Trends in 100G, 400G, and 800G Optical Transceivers

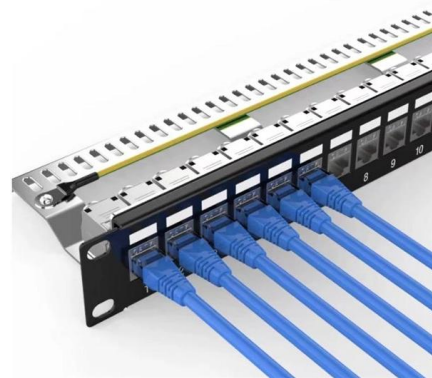
Differences Between 100G, 400G, and 800G Optical Transceivers Transmission Distance: 100G optical modules typically support a transmission distance of up to 100m in multi

100G QSFP28 Single Mode Transceivers: Types, Specs, and

Explore the world of 100G QSFP28 single mode transceivers, including LR4, ER4, ZR4, and PAM4



variants. Learn about their specifications, applications, and how to choose the right



QSFP 100G LR4: 1310nm Single Mode Fiber Module Explained

Understand QSFP 100G LR4 optical transceiver for high-speed 100G network, long-reach single-mode fiber links, and efficient data center or campus deployment.



1pc 100Gb QSFP28 Singlemode Module 100GBASE-LR4 1310nm

1pc 100Gb QSFP28 Singlemode Module 100GBASE-LR4 1310nm 10km DOM Duplex LC SMF Optical Transceiver Compatible with Arista/Brocade/Dell SFP-100G-LR4 ect.



UniFi 100G PSM4 Single-Mode Optical Module

QSFP28 transceiver that supports 100G connections up to 2 km using single-mode fiber with an MPO-12 APC connector.





Comparing 100G Single Lambda and 4 Channel Optical

100g single lambda modules offer easier upgrades, simpler cabling, and future-ready performance compared to 100g 4 channel optical modules.



What Is A 100G Single Lambda Optical Transceiver?

This article will introduce the 100G single lambda optical module, which can provide an excellent cost-effective solution for Ethernet and a

Understanding 100G Single Fiber QSFP28 Module for

100G single fiber QSFP28 modules enable fast, cost-effective network upgrades using one fiber strand, ideal for scalable modern data centers.



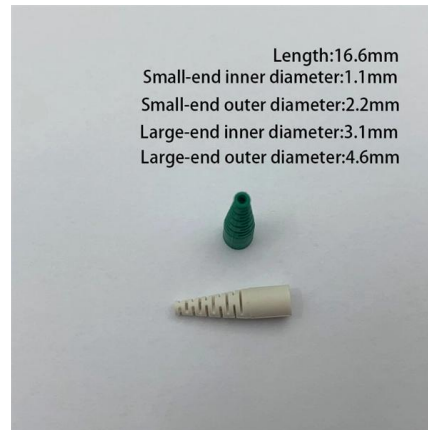
UniFi 100G LR4 Single-Mode Optical Module

QSFP28 transceiver that supports 100G connections up to 10 km using single-mode fiber with a duplex LC UPC connector.



100G Optical Transceiver Technologies , Juniper Networks

100G single-wavelength optics (FR, LR, DR, ER1) are pluggable transceivers that leverage PAM4 modulation technology to transmit the full 100G data using a single laser.



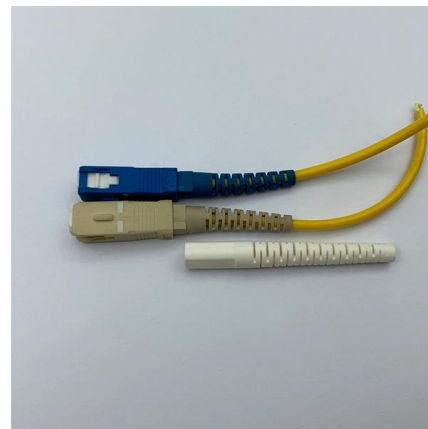
10 Types of 100G QSFP28 Single Lambda Modules

The 100G single lambda optical module can be used as an alternative or supplement to 100G long-distance transmission, which is more cost



100G Optical Module: How to Choose Between SR4,

3.100G BiDi SR Asterfusion QSFP28-100G-SR BiDi
850nm 910nm 100m Duplex LC MMF
Transmission Distance: Up to 100m Transmission Mode:



The Knowledge 100G Optical Transceivers You Should

How should the correct 100G optical transceiver module be selected? This blog will introduce 100G optical transceiver related knowledge, hope to help



Single-Lambda 100G Pluggable Optics Solution Overview

Cisco's vision is to simplify 100G pluggable optics. With fewer components in the pluggable module, we can scale manufacturing volume and cost to the level of today's 10G SFP+ optics. Through silicon



100G QSFP28 Single Wavelength

A QSFP28 100G single-wavelength module delivers 100 Gbps over one optical lambda using PAM4 modulation, instead of spreading traffic across 4 wavelengths like CWDM4/LR4. This



Exploring 100G Single Mode QSFP28 Transceiver Types

Explore 100G single mode QSFP28 module types by distance, cost, and use case to select the best fit for data center, metro, or long-haul networks.





100G LR4 Single-Mode Optical Module

QSFP28 transceiver that supports 100G connections up to 10 km using single-mode fiber with a duplex LC UPC connector.

Single Lambda 100G QSFP28 Modules Overview

Explore the features and applications of Single Lambda 100G QSFP28 modules and learn how these modules enhance high-speed data transmission in various



Future-Proof Your Data Center with Single-Lambda

Find out how the newest addition to Cisco's line of single-lambda 100G optics provides operational flexibility for data center operators.

100G QSFP28 DR Single Wave Optical Module Working

Different package types of 100G optical modules bring great difficulties to the interconnection interoperability and compatibility of the Internet,



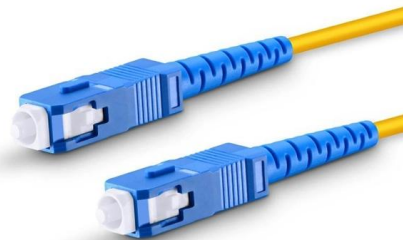
A Comprehensive Guide to 100G Optical Transceiver

This guide explores the key 100G module form factors--CFP, CFP2, CFP4, CXP, and QSFP28--and highlights their applications, advantages, and



GAOTek QSFP-100G-LR4-S Compatible Optical

The GAOTek QSFP28 module provides 100GBase-LR4 throughput up to 10km over a standard pair of single mode fiber (SMF) with duplex LC connectors. Digital



Overview of 100G Optical Modules and Modulation

It utilizes four independent edge-emitting single-mode lasers and an array of photodetectors, transmitting over a single-mode ribbon fiber. Each





Contact Us

For datasheets, pricing, or custom telecom energy solutions, please visit:
<https://www.koskolong.co.za>