



Adam Tas Corridor Energy

Gigabit 16-bit optical SFP switch





Gigabit 16-bit optical SFP switch



Gigabit SFP Module: A Complete Guide to 1G SFP Transceivers

SFP Modules vs Fixed-Port Transceivers Unlike fixed-port transceivers, which are permanently integrated into network hardware, gigabit SFP modules are interchangeable and hot-pluggable:

RG-SF2920-16GT2SFP-P 16-Port GE All-Optical PoE Switch, 2 x Gigabit

All-Optical Ethernet Switch RG-SF2920-16GT2SFP-P The Ethernet architecture and novel Fiber-to-the-Room (FTTR) deployment delivers 1G fiber-to-the-room access. This switch provides 16 x



16-port full gigabit managed ethernet fiber switch BP

The BP-SWM8G8F01 is a full gigabit managed Ethernet fiber switch. It has 8*10/100/1000Base-T RJ45 ports and 8*100/1000Base-X SFP fiber slot ports.

1G SFP LX 1310nm 20km Single mode Transceiver

Generic SFP-1G-LX Compatible 1000BASE-LX/LH SFP 1310nm 10km-20km Transceiver supports



1G gigabit Ethernet throughput over singlemode fiber (SMF)



Gigabit SFP optical transceiver modules

Gigabit SFP optical transceiver modules In December 2017, Aruba introduced Revision D versions of 100M, 1G, and 10G transceivers. Revision D products are structured to be specific alternative



Understanding the SFP Port on a Gigabit Switch

A detailed guide to the SFP port on a Gigabit switch, its different types, and its comparison with the RJ45 port.



16-port full gigabit managed ethernet fiber switch BP

16-port full gigabit managed ethernet fiber switch BP-SWM8G8F01 The BP-SWM8G8F01 is a full gigabit managed Ethernet fiber switch. It has





Gigabit Ethernet

Gigabit Ethernet was the next iteration, increasing the speed to 1000 Mbit/s. The initial standard for Gigabit Ethernet was produced by the IEEE in June 1998 as



Switch , 16-Port, 2x 1Gb SFP, 2x Combo SFP

Dieser Access Switch bietet eine kompakte, kostengünstige Lösung für IP MAN- und Enterprise-Netzwerke. Basierend auf der leistungsstarken Hardware und der FSOS-Plattform unterstützt es

Industrial Managed 16-Port Optical Fiber Switch with

The GAOTek industrial managed 16-port optical fiber switch ensures stable and reliable Ethernet transmission, perfect for harsh environments like industrial



Gigabit SFP Network Switch Selection Guide for 2025

From a future-proofing perspective, gigabit SFP switches enable seamless upgrades to fiber optic networks as fiber becomes the standard for high-speed data transmission. While standard



Switch with 16x SFP, 8x10/100/1000M Base-TX or SFP,

This layer 3 Managed Gigabit switch is easy to install and optimized for growing



Cisco Optics , Transform Your Network

Get the highest quality, performance-leading optical transceivers for any network architecture. Find the transceiver model to fit your network.



16-ports Full Gigabit L2 Unmanaged Fiber Switch OPT

OPT-6016 L2 Fiber Ethernet Switch provide 16-port 1000M SFP fiber ports, the SFP type is flexible according to user needing, such as 1000Base-T, 1000Base-SX,





Switch with 16x SFP, 8x10/100/1000M Base-TX or SFP,

This layer 3 Managed Gigabit switch is easy to install and optimized for growing businesses. It is also usable for VoIP and/or IP-Cameras. The switch offers 16

10 Gigabit Ethernet

10 Gigabit Ethernet (10GE, 10GbE, or 10 GigE) is a group of computer networking technologies for transmitting Ethernet frames at a rate of 10 gigabits per second.



16-Port Gigabit Ethernet L2+ Stackable Fiber Switch

The S5300-16S8TS4X is a managed Gigabit access layer switch with 16x 1G

Switch, 16-Port, Gigabit Ethernet, SFP+, PoE+

Die Aruba 2930F Switch-Serie ist eine leistungsstarke, sichere und benutzerfreundliche Lösung für Netzwerke in Unternehmensperipherien, Zweigstellen und SMBs.





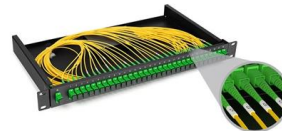
InfiniBand



InfiniBand switch with CX4/SFF-8470 connectors
In addition to a board form factor connection, it can use both active and passive copper (up to 10 meters) and

16-Port 10G/Multi-Gigabit-Ethernet-Smart-Switch mit 2

Erfahren Sie, wie Sie davon profitieren können, ein registrierter NETGEAR Partner zu werden.



Gigabit 16-port L2+ managed PoE switch

The ONV-POE33168PFM is a gigabit L2+ managed PoE fiber switch independently developed by ONV. It has 8*10/100/1000Base-T adaptive RJ45 ports and

CS-34816XG - 16 Port SFP Gigabit + 8 Combo Gigabit Ports

CERIO CS-3000 Series Model : CS-34816XG is the latest powerful high-performance L2/L3 Lite Fiber Optical Switch, It built-in web-browser management interface allows the administrator to manage and



SFP modules - transceivers for 1/2/4G fibre channel

SFP - small form factor - pluggable modules for various optical data communications such as Fast Ethernet, Gigabit Ethernet, BiDi, SDH Sonet and 4G.



RG-SF2920-16GT2SFP 16-Port GE All-Optical Switch, 2 × Gigabit

All-Optical Ethernet Switch RG-SF2920-16GT2SFP The Ethernet architecture and novel Fiber-to-the-Room (FTTR) deployment delivers 1G fiber-to-the-room access. This switch provides 16 x



16-Port Managed Gigabit Ethernet Switch, Layer 2,

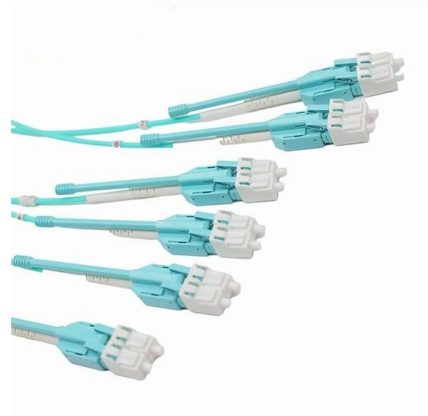
New generation of Gigabit Ethernet switch designed for high security and top performance. Features 16 auto-negotiating RJ45 ports and dual GbE SFP optical





Napakahusay na kalidad ng Gigabit Sfp Switch

10-port Gigabit Fiber Ethernet Switch, 2-port 1000Base-FX and 8-port 10/100/1000Base-T(X) Introduction JHA-G28 series is complies with IEEE802.3 standards, It is designed to convert data



Contact Us

For datasheets, pricing, or custom telecom energy solutions, please visit:
<https://www.koskolong.co.za>