



Adam Tas Corridor Energy

Gigabit Switch Port Aggregation





Overview

Look for models from Cisco or Netgear with redundant power supplies and advanced chipsets. Switch-to-Switch Aggregation: This is useful in scenarios where you need to interconnect multiple switches to increase the bandwidth available between them and ensure network redundancy. To allow port aggregation, the basic configuration on all the ports must be consistent. Companies like Cisco and Juniper usually stick to standards for easier mixing of hardware.



Gigabit Switch Port Aggregation



Understanding Ethernet Port Aggregation: Benefits,

In Ethernet port aggregation, multiple physical ports on a switch are grouped together to form a single logical port. This logical port acts as a single

How To Set Up Switch Link Aggregation

I'm going to set up Link Aggregation between two gigabit switches: an 8 port Linksys SRW2008; and a 16 port Netgear GS716GT, shown in Figures 1 and 2 below. We



NETGEAR

Shop NETGEAR Plus Series 8 Port Gigabit Ethernet Switch Gray products at Best Buy. Find low everyday prices and buy online for delivery or in-store pick-up.

What Are Link Aggregation, LAG, and LACP?

If you have a Gigabit switch with multiple Gigabit Ethernet ports, you can connect them to another



device with numerous ports and use link aggregation to balance traffic across these links,



TP-Link TL-SG1218MPE Desktop Switch Price in Bangladesh

TP-Link TL-SG1218MPE smart PoE+ switch offers 16 Gigabit PoE ports, 250W power budget, and advanced business networking features.



Orei

Shop Orei ToVi 24 Port Gigabit PoE Switch w/ 4x10G SFP+ Uplink (1U Rackmount) (NS 1G24) Gray products at Best Buy. Find low everyday prices and buy online



TP-Link TL-SG2008 V3 8 Port Gigabit Smart Managed

TP-Link TL-SG2008 V3 8 Port Gigabit Smart Managed Switch Omada SDN Integrated IPv6 Static Routing L2/L3/L4 QoS, IGMP & Link Aggregation 5 Year





Comparing Cisco Catalyst C1300-48T-4X 48-Port Gigabit Managed

You Pay: \$783.95 Add to Cart Add to Wish List
Cisco Catalyst C1300X-48T-4X 48-Port Gigabit Managed Network Switch You Pay: \$1,379.95 Add to Cart Add to Wish List



Trendnet 8 Port Gigabit EdgeSmart PoE+ Switch, 8 x

Shop Trendnet 8 Port Gigabit EdgeSmart PoE+ Switch, 8 x Gigabit PoE+ Ports, 64W PoE Power Budget, Managed PoE+ Switch, Wall Unknown products at Best Buy.



Ubiquiti

Shop Ubiquiti 8 Port 10G SFP+ Managed Aggregation Switch USW Aggregation Gray products at Best Buy. Find low everyday prices and buy online for delivery



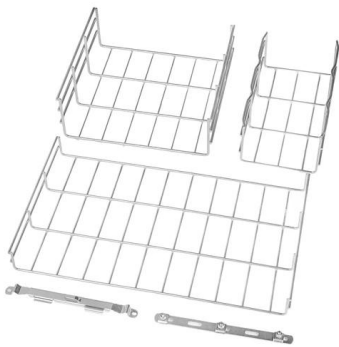
Comparing TP-Link TL-SG1008MP 8-Port Gigabit PoE+ Compliant

(2) Add to Cart Add to Wish List TP-Link TL-SG2008P 8-Port PoE+ Compliant Gigabit Managed Switch You Pay: \$89.99 (8) Add to Cart



TP-Link SG2218P Desktop Switch Price in Bangladesh

TP-Link SG2218P Omada smart switch offers 16 Gigabit PoE+ ports, 150W PoE budget, and advanced cloud-managed networking.

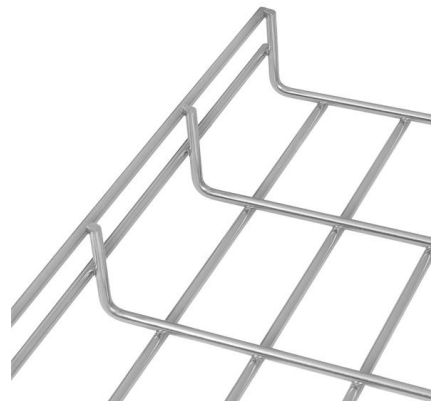


TP-Link TL-SG3428X NetworkSwitch Price in Bangladesh

TP-Link TL-SG3428X managed switch offers 24 Gigabit ports, 4×10G SFP+ uplinks, and Omada SDN cloud management for enterprise networking.

Switch Aggregation

Faster replacement and priority support, covered for 5 years. High-performance 10G SFP modules for optimal connectivity. An 8-port, Layer 2 switch made for 10G





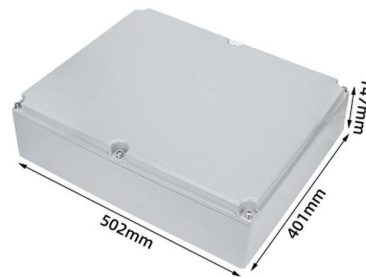
Ubiquiti UniFi Switch USW-Aggregation



UniFi Aggregation Switch is a managed Layer 2 switch with eight 10G SFP+ ports. Featuring a compact 4.7" depth and fanless design, it supports high-bandwidth

Cisco C1300-48P-4X, 48-Port PoE Gigabit Managed Switch with 4x

Leverage the power of 48 Gigabit PoE+ ports to simultaneously support a wide range of network devices, optimizing your clients' infrastructure deployments. Benefit from 4x 10 Gigabit SFP+ uplinks,



Port Aggregation Configurations

Port aggregation allows you to group multiple physical ports into one unit. Port aggregation is useful for implementing load balancing and provides a redundant link backup. To allow port aggregation, the

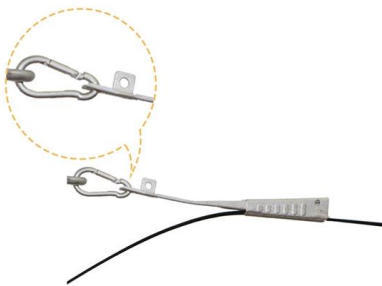
Aggregated Ethernet Interfaces Overview , Junos OS , Juniper Networks

You can configure LAGs to connect a QFX Series product or an EX4600 switch to other switches, like aggregation switches, servers, or routers. This example describes how to configure LAGs to connect



Compare Netgear GS308LP 8-Port Gigabit PoE+ Compliant Unmanaged Switch

Compare Netgear GS308LP 8-Port Gigabit PoE+ Compliant Unmanaged Switch vs Netgear 8-Port Gigabit Ethernet PoE+ Unmanaged Switch vs Netgear GS308PP 8-Port Gigabit PoE+ Compliant



Link Aggregation: What is it, and How Does it Work?

A fundamental for effective switch management, if you have a switch with a whole lot of Gigabit Ethernet ports, you can connect all of them to another



Data Center Aggregation Layer Design and Configuration with

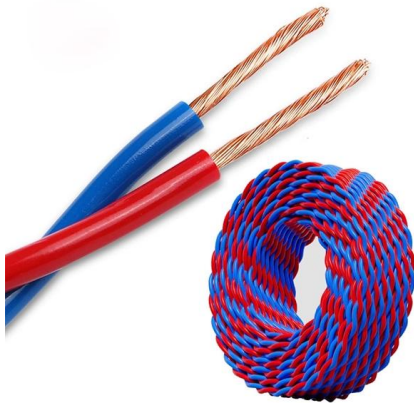
This chapter covers the design recommendations for a data center design deployment consisting of a Cisco Nexus® 7000 Series Switch at the aggregation layer and a Cisco Nexus 5000 Series Switch at





TP-Link TL-SG3428XMP Managed Switch Price in Bangladesh

TP-Link TL-SG3428XMP JetStream 24-Port L2+ Managed Gigabit PoE Switch in Bangladesh The TP-Link TL-SG3428XMP JetStream 24-Port L2+ Managed Gigabit PoE Switch is an enterprise-grade



30-Port Lite Layer 3 Stackable Managed Gigabit Switch

The D-Link DGS-3130 Lite Layer 3 Stackable Managed Switches are a Gigabit access layer solution specifically designed to connect end-users in enterprise and metro Ethernet access networks. The

Unlock Speed with Ethernet Port Aggregation Guide

Ethernet port aggregation, also known as Ethernet link aggregation, port bonding, or network link aggregation, combines multiple ports into one. This



Ubiquiti UniFi Pro Aggregation 32-Port Gigabit Ethernet Managed Switch,

Get Ubiquiti UniFi Pro Aggregation 32-Port Gigabit Ethernet Managed Switch, Silver (USW-PRO-AGGREGATION) fast at Staples. Free next-day delivery when you spend \$35+.



Contact Us

For datasheets, pricing, or custom telecom energy solutions, please visit:
<https://www.koskolong.co.za>