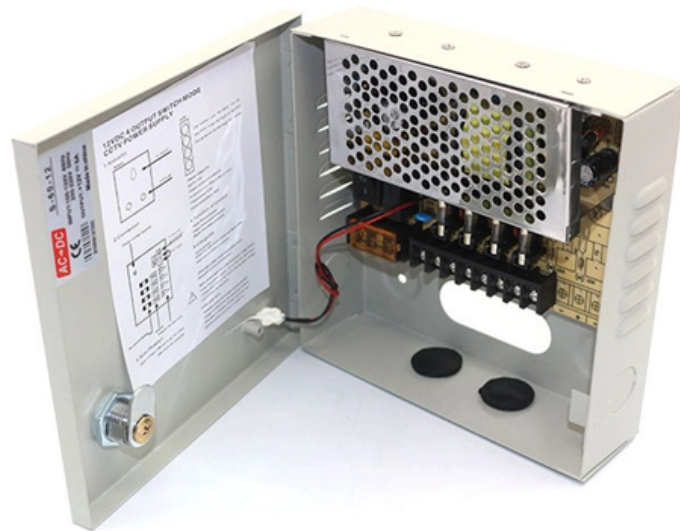




Adam Tas Corridor Energy

Ground wire of old-style distribution box





Overview

26 mm² (10 AWG) ground wire must be used, and in all other markets a 6 mm² must be used. Electrical grounding establishes a safety mechanism within a home's wiring system. Grounding creates a dedicated, low-resistance pathway for excess electrical current to travel safely to the earth during a fault or short circuit. No ground wire in electrical box (very old building) - options for installing this switch?

That little red tail under the cable clamp means you have BX or MC feeding that box, that metal jacket is your ground. The kitchen area outlets, all 2-prong, seem to be original to our 1950s California house, or perhaps modified in the late 1960s.



Ground wire of old-style distribution box



DISTRIBUTION BOX

Each DISTRIBUTION BOX and controller must be grounded. On the US market, a 5.26 mm² (10 AWG) ground wire must be used, and in all other markets a 6 mm² must be used.

How do I add grounding to my old electrical wiring?

This old house is (50's) is wired with cloth covered 12/2 Romex with no ground and all metal boxes. Can I just run a 12 ga or 14 ga solid wire between boxes and then to the ground bus of my service panel



No ground wire in electrical box (very old building)

Put a ground pigtail with a 10-32 ground screw in the back of the box and tie your ground wire to that.. It's a self grounding device (meaning if the box is screwed



How to Add a Ground Wire to an Old House

The preferred solution for establishing a true equipment ground is the physical installation of a



dedicated grounding conductor. Running a Dedicated Ground Wire This method involves pulling



Adding grounding wire in older house , Information by Electrical

When I've had this type of situation cross my path, I always say that if you're going to go to the trouble of running ground wires, you might as well replace the old "romex" with new NM-B

How do you retrofit an old house and ground it?

If, theoretically, you have an old house that has no ground whatsoever, can you run a grounding wire from the panel to all of the outlets to fix this? updated We have BX/AC wiring. And also apparently



Electrical Panel Grounding and Bonding

The topic of grounding and bonding is a never ending area of confusion. The difference between a service panel and a sub panel is also muddy in many



Have old 2 wire romex, how to run just a ground

My Dad's house was built in 1953 with the two wire, no ground, cloth coated, non-metallic cable. We did almost exactly what you are planing to do. I fished a #12 green wire from each outlet



Ground new wiring going into old two-wire outlet?

Now I'm wondering what the proper way to wire the ground is. In the picture, you can see that the prior wiring had a small wire connecting the ground

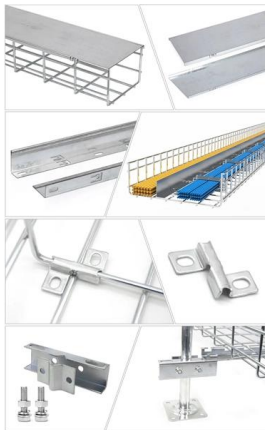
Electrical Ground in Old Buildings

Old house electrical ground wiring: inspection, troubleshooting, repair procedures, including safety warnings for knob and tube un-grounded circuits.. This article answers nearly all questions about



Grounding System Installation Standards for Distribution Boxes and

Whether you're a seasoned pro or just starting out, this comprehensive guide will give you practical insights into proper grounding techniques, with a special focus on how selecting quality materials



Correct Connection Method Of Grounding Wire Of

Generally, copper core wire is selected as the ground wire and connected to the PE wiring bar. When connecting, it is necessary to strip the wire



Proper Method to Ground an Old Electrical Fuse Box

This is why a working system earth ground is so important in an electrical distribution system, especially for older-style fuse boxes. The earth





directory-list-2.4.txt/directory-list-2.4.txt at main

Customer stories Events & webinars Ebooks & reports Business insights GitHub Skills



Proper Method to Ground an Old Electrical Fuse Box

Inside the Fuse Box: A neutral bar (a metal strip with terminals for various connections) receives the bare ground wire, connecting the power supply

How To Run A Ground Wire To An Electrical Panel Box

Your service panel's ground wire prevents a line fault from becoming a shocking experience. By shunting excess line voltage back to the panel's neutral pole, the ground current



How to Add a Ground Wire to an Old House

This method involves pulling a new, bare or green-insulated copper ground wire from the ungrounded receptacle box back to a proper grounding location. This path must terminate at the



Method for making the ground wire of a household distribution box

Drive the galvanized angle steel or steel pipe into the bottom of the trench, exposing about 0.2 meters above the ground. Connect the grounding electrodes with flat steel to form a grounding



receptacle

Those analyzer readings to me suggest that the metal junction box holding the outlet is in fact grounded to the electrical

Service Panels

The service panel houses incoming cables from the meter as well as the breakers and wires that distribute electricity to individual circuits. At the service, neutral





The Importance of Ground Wires in the Breaker Box: A

The ground wire in a breaker box is a crucial element of an electrical system, providing safety and preventing electrical shocks. Learn more about its

What To Know about Wiring in Older Homes , Acosta

For example, the wiring code requires different sheathing colors for other wires. The live wire should always be black. The neutral wire will always be

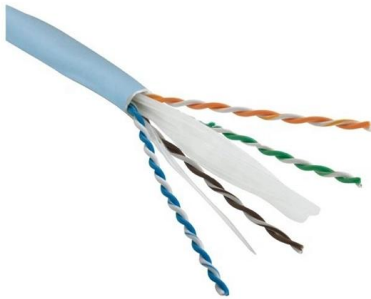


Electric system ground system inspection

Electrical ground system inspection procedures & checklists. This document discusses procedures the inspection of the grounding system components of a building electrical system when performed by

Electrical Outlet Ground Wire Connections

Ground wire connections at receptacles: how to connect the ground wires at an electrical receptacle: here we give the proper ground wire connections when hooking up an electrical receptacle (wall plug



How to ground old style Romex (no ground) multi-wire circuit

The alternative is to either abandon the red wire and use a ground from another source in the next junction box (available) or replace the old 12-3 Romex that doesn't have a ground with a

Contact Us

For datasheets, pricing, or custom telecom energy solutions, please visit:
<https://www.koskolong.co.za>