



**Adam Tas Corridor Energy**

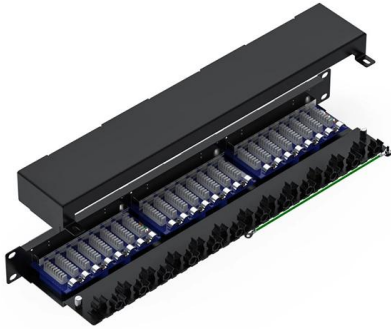
# **Grounding of the secondary distribution box for charging piles**





## Grounding of the secondary distribution box for charging piles

---



### Distribution System Grounding , part of Electric Power and Energy

Improper grounding in secondary systems can cause safety issues including fire and failure of equipment in homes. Most common problems are open secondary neutral, load incorrectly

### Integrated Layout Of Surge Arrester And Grounding Grid

The grounding network in power facilities plays a role in current discharge and equipotential bonding. Its layout should be spatially designed



### Distribution System Grounding , part of Electric Power and Energy

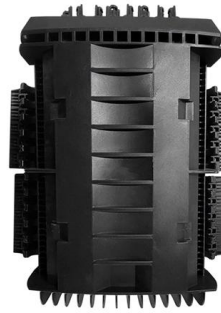
National Electric Safety Code (NEC) is designed for primary part of the distribution system and has been adopted by law by most states and Public Service Commissions across the United States.

## Charging pile

8.1 Input AC Power Distribution Wiring Input AC Power Distribution: First open the front door of the charging pile, then three-phase five-wire AC



power supply (400VAC) need to be



### Integrated Layout Of Surge Arrester And Grounding Grid

Grounding wires should minimize loops and bends, avoiding isolated, suspended grounding components to reduce local potential differences. After the

### GROUND GRID SPECIFICATIONS

Each Power Circuit Breaker or Power Transformer having a bushing Voltage Transformer on the tank shall have the Voltage Transformer provided with a separate ground lead, independent of the



### Research on the Charging Pile Construction and Load Acceptance

With the development and improvement of the interactive operation mechanism of charging piles, the demand for the optimal configuration of electric vehicle charging stations and the construction of



## REVIEW OF GROUND FAULT PROTECTION METHODS FOR

First, we review and compare medium-voltage distribution-system grounding methods. Next, we describe directional elements suitable to provide ground fault protection in solidly- and low



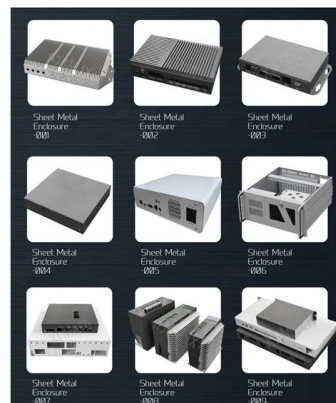
## GROUNDING OF UTILITY AND INDUSTRIAL DISTRIBUTION

Essentially this workshop is broken down into system grounding, protective grounding and surge/noise protection of power and electronics systems normally found in distribution networks. A brief



## New Energy Charging Pile Dispenser Explosion-Proof

New Energy Charging Pile Dispenser Explosion-Proof Box Distribution Cabinet IP66 Electrical Distribution Box, Find Details and Price about Corrosionproof Power



## Construction and technical requirements of charging piles

The input end of the charging pile is directly connected to the AC grid, and the output end is equipped with a charging plug for charging the electric vehicle.





## Grounding Electrical Distribution Systems , part of Grounding

The first concern and the most important reason for proper grounding techniques are to protect people from the effects of ground-faults and lightning. Creating an effective ground-fault current path to



## Why do DC charging piles require ground tests? -

Ground tests in DC charging piles are the escort for the safety of electric vehicle charging. It is an essential design link.

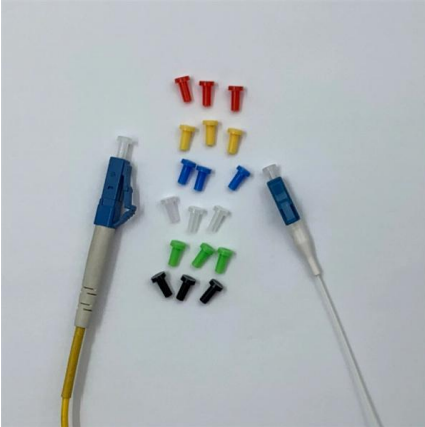
## Grounding Practices in Power Distribution Systems

There is a possibility that high-resistivity soils will need further grounding measures, such as the installation of deeper electrodes or the utilization of conductive



## GROUND GRID SPECIFICATIONS

PURPOSE AND SCOPE IPMENT, STRUCTURES, ETC. IN ELECTRICAL STATIONS INCLUDING TRANSMISSION AND DISTRIBUTION SUBSTAT GROUNDING OF NON-CURRENT CARRYING



### **Distribution system grounding fundamentals , IEEE Conference**

The most common medium voltage electric distribution system in the United States is multigrounded wye using a common neutral for both primary and secondary systems. The effective interconnection



### **Grounding in Power Transmission and Distribution Networks**

Power transmission and distribution systems are earthed for electric shock and fault protection. This chapter presents the principles and practices of grounding for power systems. An

### **Grounding in Power Transmission and Distribution Networks**

Power transmission and distribution systems are earthed for electric shock and fault protection. This chapter presents the principles and practices of grounding for power systems. An earthed power



## Research on Distribution Strategy of Charging Piles for

The distribution and scale of charging piles needs to consider the power allocation and environmental adaptability of charging piles. Through the



## The Basics of Substation Grounding: Parts of the

One of the vital aspects of the protection of people and equipment in electrical substations is the provision of an adequate grounding system. The



## IEEE Recommended Practice for System Grounding of Industrial and

The basic reasons for grounding or not grounding the electrical system and the various types of system grounding, as well as the practices commonly used to ground electrical systems are discussed.



## Charging pile installation and main matters

The installation foundation level should be no less than 0.2m above the ground, and the distance between the charging pile and the wall and parking space should be



## System Grounding

First, the system voltage with respect to ground is fixed by the phase-to-neutral winding voltage. Because parts of the power system, such as equipment frames, are grounded, and the rest of the

## Grounding & Bonding-Temporary Power Generation and Electrical Distribution

National Electrical Code of an effective ground fault current path is the backbone of electrical safety and shock prevention in temporary power generation and electrical distribution





## Understanding Electric Vehicle Charging Piles: Common

Common indicators and functional descriptions of electric vehicle charging piles [Simple principle Before explaining the various indicators, it is

## Distribution System Grounding

It is recommended to ground the neutral at various strategic locations in distribution substations, overhead lines and underground cables, distribution transformers, and all loads.



## Indoor and Outdoor Wall Mount Charging Pile Distribution Box

This versatile distribution box is specifically engineered for EV charging applications, offering a robust solution for both indoor and outdoor installations. Built with durable, weather-resistant materials, it

## Contact Us

---

For datasheets, pricing, or custom telecom energy solutions, please visit:  
<https://www.koskolong.co.za>