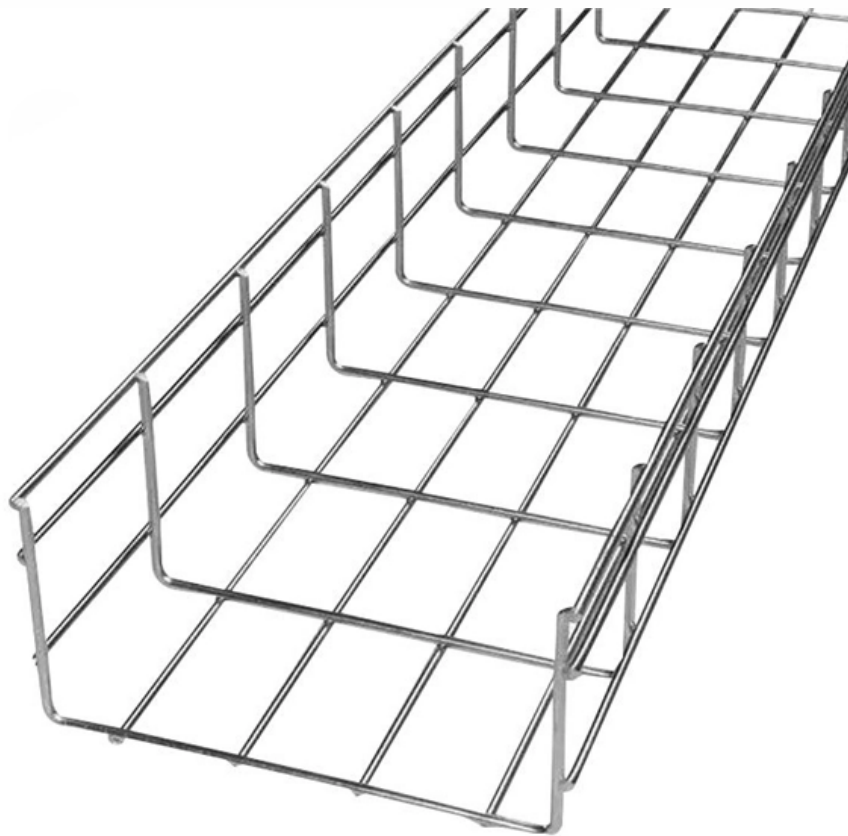




Adam Tas Corridor Energy

Grounding terminal of iron distribution box





Overview

Grounding of the units: Attach a ground wire from one of the threaded studs (A) at the bottom of the housing, to the mounting plate (B). 26 mm² (10 AWG) ground wire must be used, and in all other markets a 6 mm² must be used. Today, we're diving deep into the world of distribution box grounding, breaking down the standards, and shining a light on those sneaky mistakes that even experienced electricians sometimes make. Whether you're a seasoned pro or just starting out, this comprehensive guide will give you practical. A grounding bar for electrical boxes provides a centralized grounding point inside metal enclosures, junction boxes, and distribution panels.



Grounding terminal of iron distribution box



Nine Recommended Practices for Grounding

Electrical Grounding Techniques Grounding and bonding are the basis upon which safety and power quality are built. The grounding system provides a

The Basics of Grounding & Bonding Electrical Systems

It requires a bonding jumper to connect the grounding terminal of a receptacle (green screw) to the metal box; with the metal box then connected to the system EGC.



DISTRIBUTION BOX

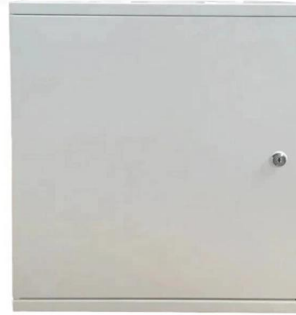
Each DISTRIBUTION BOX and controller must be grounded. On the US market, a 5.26 mm² (10 AWG) ground wire must be used, and in all other markets a 6 mm² must be used.

Fundamentals of Grounding in Industrial Automation and

The subject of grounding in electronics is broad



and complex, spanning across a variety of functions and objectives. In this article, we will



Earthing for a Distribution or Transmission Line

Grounding cluster bars are used for the protective grounding of distribution lines and aerial cable terminations. They are placed just below the

Stainless Steel Distribution Box Installation Manual: How To Properly

When inspecting the interior of a stainless steel outdoor electrical box distribution box, pay attention to the copper or tin-plated terminals on the base plate or side walls. These locations are usually marked



Correct Connection Method Of Grounding Wire Of

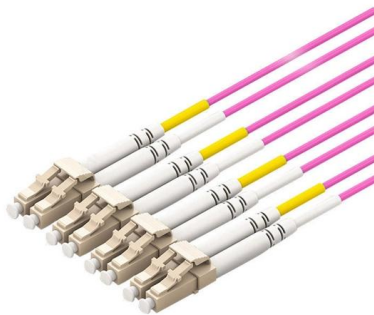
Open the distribution box and find the position marked with the grounding plate or PE letter. This position is the connection point of the grounding





Grounding System Installation Standards for Distribution Boxes and

Whether you're a seasoned pro or just starting out, this comprehensive guide will give you practical insights into proper grounding techniques, with a special focus on how selecting quality materials

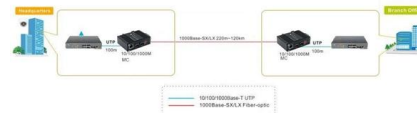


Protective grounding requirements for transmission and

Introduction to protective grounding This technical article covers protective grounding requirements for steel tower and wood pole supported

Iron Coating Ground Terminal Box-Balic

The ground terminal box is also known as the equipotential bonding terminal box, (wiring fire terminal box, iron distribution box, equipotential box), etc. The equipotential bonding terminal box is suitable



System Grounding

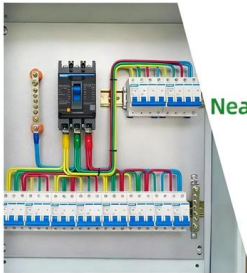
The delta configuration has only three terminals, with the phase-to-phase voltage set by the winding voltages and the neutral terminal not defined. Neither of these arrangements is inherently associated



DETAILS DISPLAY



Focus On Every Detail



01

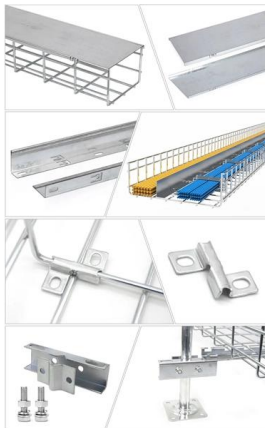
Neat & Clean
Layout



Cleaner arrangement
of components,
Easy to operate

How to solve the problem of distribution box installation

There is grounding terminal board in the distribution box, which shall be connected with the box body. The operation zero line terminal board shall be insulated from



Ground Terminal Blocks , McMaster-Carr

Choose from our selection of ground terminal blocks, including over 140 products in a wide range of styles and sizes. Same and Next Day Delivery.

Stainless Steel Ground Terminal Box-Balic

The equipotential bonding terminal box is suitable for general industrial and civil building electrical installations, and can effectively prevent lightning system failure



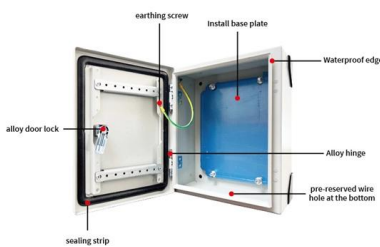


Protective grounding requirements for transmission and distribution

Learn how to select and install a grounding bar for electrical boxes, including sizing tips and ground bar options for metal enclosures.

The Ultimate Guide to Protective Grounding Boxes

Learn about the benefits, types, and importance of protective grounding boxes in ensuring electrical safety and preventing hazards.



Earthing Bars - What They Are and What They Do

An earthing bar is a metal strip, often made of copper, equipped with several terminals to connect grounding or earthing conductors. It creates a common

Grounding in Power Transmission and Distribution Networks

Power transmission and distribution systems are earthed for electric shock and fault protection. This chapter presents the principles and practices of grounding for power systems. An earthed power



Stainless Steel Ground Terminal Box-Balic

The ground terminal box is also known as the equipotential bonding terminal box, (wiring fire terminal box, iron distribution box, equipotential box), etc. The



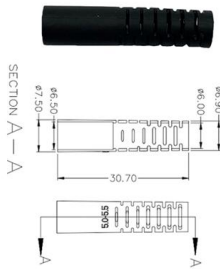
A Practical Guide to Grounding Terminal Block Installation

Explore our complete guide to the grounding terminal block. Learn about types, standards, and installation best practices for safe and reliable control



Industrial Automation Wiring and Grounding Guidelines

Purpose This publication gives you general guidelines for installing an Allen-Bradley industrial automation system that may include programmable controllers, industrial computers, operator



Grounding Requirements for Electrical Cables, Cable Trays, and

Guidelines for grounding electrical cables, busbars, and cable trays in wiring projects, ensuring safety and compliance with industry standards.



Grounding Practices in Power Distribution Systems

The installation of grounding methods for transmission lines is absolutely necessary in order to guarantee the safety, dependability, and effectiveness of power

Ground Terminal Blocks , Electrical Grounding Solutions

Browse ground terminal blocks designed for safe, reliable electrical grounding in industrial control panels and commercial electrical systems.





Contact Us

For datasheets, pricing, or custom telecom energy solutions, please visit:
<https://www.koskolong.co.za>