



Adam Tas Corridor Energy

Guatemala CE-certified Erbium-doped Fiber Amplifier DML





Guatemala CE-certified Erbium-doped Fiber Amplifier DML



Erbium Doped Fiber Amplifiers

Erbium Doped Fiber Amplifiers (EDFAs) have revolutionized the optical communications world by expanding the applications for which optical fiber is a solution.

Detailed theoretical and experimental investigation of high-gain erbium

A full-scale numerical model for the erbium-doped fiber amplifier has been developed that incorporates realistic index and erbium-concentration profiles as well as the spectral distribution of amplified



Introduction to Erbium Doped Fiber Amplifier (EDFA)

Introduction to Erbium Doped Fiber Amplifier (EDFA) In optical communication network, signal travels through fibers in every large distances

EDFA (Erbium Doped Fiber Amplifier) - Physics and

EDFA (Erbium-Doped Fiber Amplifier) is an optical device used to compensate optical signal



attenuation caused by fibers and components, to increase optical



Erbium-Doped Fiber Amplifiers (EDFAs): Foundations

Conclusion The erbium-doped fiber amplifier remains the cornerstone of optical communications, more than three decades after its invention. By directly



Erbium Ytterbium Doped Fiber Amplifier, Up to 37 dBm, Rackmount

The Optilab EYDFA-XX-R Erbium Ytterbium Doped Fiber Amplifier (EYDFA) is a high-power, versatile amplifier designed for MOPA, optical communication and other general-purpose optical applications.



Erbium-doped Fiber Amplifiers

Erbium-doped fiber amplifiers are by far the most important fiber amplifiers in the context of long-range optical fiber communications; they can efficiently amplify





Erbium Doped Fiber Amplifier (EDFA) , Fibercore

An amplifier is used to boost optical signals to higher power, often used both at launch and within a signal network to maintain a high signal power. The amplifier is based on erbium doped fiber, and



What Is EDFA? How Erbium-Doped Fiber Amplifiers Work

An EDFA, or erbium-doped fiber amplifier, is a device that boosts optical signals traveling through fiber-optic cables without ever converting them to electrical signals.

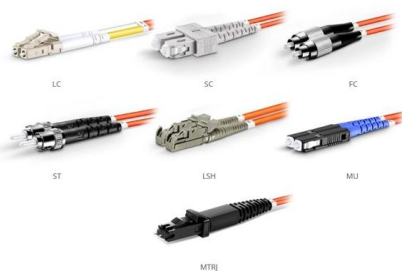
Erbium Doped Fiber Amplifier

Erbium Doped Fiber Amplifier EFA-S Series, Single Channel C-band EDFA Description GIP Technology S-series Erbium Doped Fiber Amplifiers (EDFAs) are designed for use in the single-channel



Progress in Er-doped fibers for extended L-band operation of

We review the current state of the art of extended L-band EDFAs in single-stage amplification, emphasizing silica-based glass hosts with tailored material compositions of the fiber



OM1 Fiber Patch Cable Family



Optical Amplifier--EDFA (Erbium-doped Fiber Amplifier)

An Erbium-doped Fiber Amplifier (EDFA) is a device used to boost the strength of optical signals in fiber-optic communication systems. In EDFA in



IP65/IP55 OUTDOOR CABINET

WATERPROOF OUTDOOR CABINET

42U/27U

OUTDOOR BATTERY CABINET

What is an Erbium Doped Fiber Amplifier (EDFA) and

EDFAs are engineered using a specialized optical fiber that is doped with erbium ions (Er^{3+}), a rare-earth element. When pumped with light at a specific

Erbium-Doped Fiber

These fibers are manufactured by the doping of rare earth elements into the glass. The resulting material so produced offers new optical and magnetic properties that make it a suitable candidate for



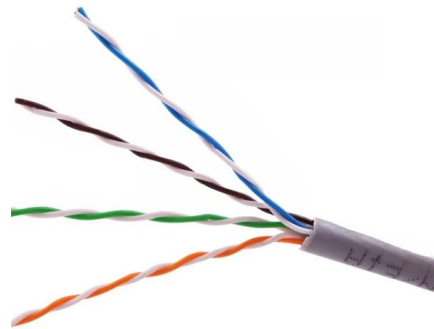
Erbium Doped Fibers , Rare Earth Doped Optical Fibers

Erbium Doped Fibers provide the basic building blocks for fiber optic amplifiers more specifically Erbium Doped Fiber Amplifiers (EDFAs) used in broadband optical networks and CATV applications. The



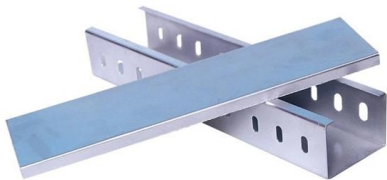
Compact and flat-gain fiber optical amplifier with Hafnia-Bismuth

For the first time, we demonstrated a compact Erbium-doped fiber amplifier (EDFA) using a newly developed Hafnia Bismuth Erbium co-doped fiber (HBEDF) as a gain medium. The HBEDF



Basic research for designing the erbium doped fiber amplifier

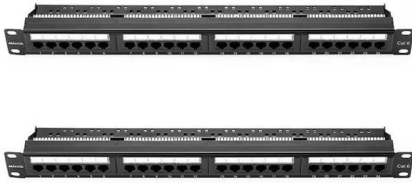
Abstract. The paper presents some of the author results obtained in the research on the optical fiber amplifiers and Quantum Well (QW) laser diodes used in long distance optical communications as



Rare-earth-doped Fibers - erbium, ytterbium, thulium,

Rare-earth-doped fibers are optical glass fibers which are doped with rare earth ions. Such dopants are usually used for laser amplification.





Erbium-Doped Fiber Amplifiers (EDFA)

Erbium-Doped Fiber Amplifiers or EDFAs are a type of optical amplifiers that employ a doped optical fiber as a gain medium to amplify an

Erbium-Doped Fiber Amplifiers (EDFAs): Foundations

EDFAs support multi-channel amplification over long distances, making them a foundational technology in global fiber-optic communication

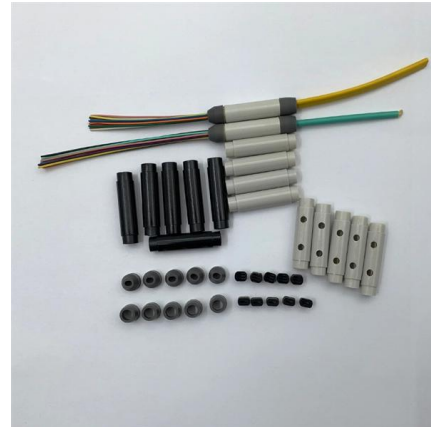


A photonic integrated circuit-based erbium-doped amplifier

We demonstrate a photonic integrated circuit-based erbium amplifier reaching 145 milliwatts of output power and more than 30 decibels of small-signal

An Erbium-Doped Fiber Amplifier With Tunable Gain-Clamping in the

To overcome the gain instability induced by the variations in the number of optical multiplexing channels, an improved configuration for an extended L-band gain-clamping erbium-doped fiber amplifier



EDFA , Erbium-doped fiber amplifiers , NIR-SWIR

Shop our collection of EDFA erbium-doped fiber amplifiers: 1030-2054nm, -14 to +15dBm input, up to 40 W output. SLM narrow linewidth options. Browse at RPMC

Erbium-Doped Fibers

Featuring high absorption levels, these fibers provide reduced length, superior signal integrity, a minimal noise figure, and low nonlinear effects, making them ideal for use in erbium-doped fiber amplifiers

Pre-Terminated Patch Panel

Standard 19" width Max 144 fibers in 1U MPO/Fusion Dual-Purpose



Removable Cable Management Tray



Transparent Front Cover



High-Quality Matte Coated Steel



How an Erbium-Doped Fiber Amplifier (EDFA) Works

Discover how the Erbium-Doped Fiber Amplifier (EDFA) uses quantum physics to defeat signal loss and power global fiber optic networks.

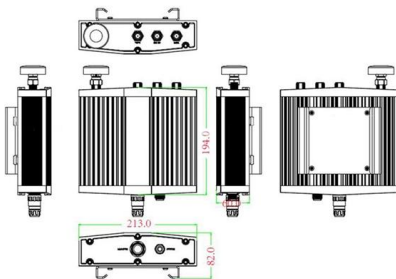


Erbium-Doped Fiber

An erbium-doped fiber amplifier is one of the most popular optical devices in modern optical communication systems as well as in fiber-optic instrumentation. EDFAs provide many advantages



Mechanical drawing



Understanding Erbium-Doped Fiber Amplifiers (EDFA)

In the realm of fiber optic communications, Erbium-Doped Fiber Amplifiers (EDFAs) play a pivotal role in enhancing signal strength over long

What is an Erbium-Doped Fiber Amplifier (EDFA)?

An Erbium-Doped Fiber Amplifier (EDFA) is a device that amplifies weak input optical signals without converting them into electrical signals. An optical amplifier is a device that amplifies the intensity of

Integrated Aluminum Alloy Die Casting



Durable and Secure Metal Screws



BASIC PHYSICS OF ERBIUM-DOPED FIBER AMPLIFIERS

Abstract A description is made of the basic physics and characteristics of erbium-doped fibers amplifiers (EDFA's). The spectroscopic features and laser properties of erbium-doped silica glass are outlined



Contact Us

For datasheets, pricing, or custom telecom energy solutions, please visit:
<https://www.koskolong.co.za>