



**Adam Tas Corridor Energy**

# **Guatemala technically supports QSFP28 optical modules 2 5G**





## Guatemala technically supports QSFP28 optical modules 2 5G

---

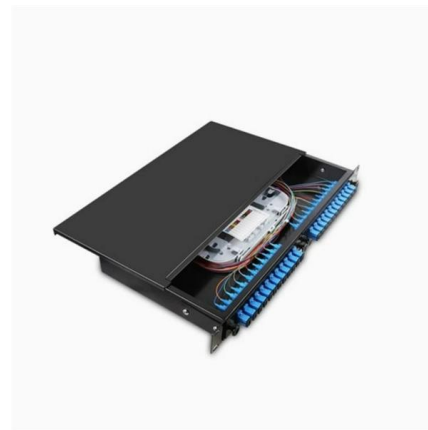


### High-Performance Connectivity: The Definitive Guide to CQP-85100G

Discover the details of High-Performance Connectivity: The Definitive Guide to CQP-85100G-SR4 100G QSFP28 SR4 Optical Transceivers at LonRise Equipment Co. Ltd., a leading

### SFP+, SFP28, QSFP+, QSFP28, QSFP56, QSFP-DD,

The most critical difference is the maximum support speed; QSFP+ supports 40Gbps (4x10G), while QSFP28 supports 100Gbps (4X25G). Besides,



### 50Gbps QSFP28 Optical Module

When this type of optical module is used to interconnect with a WDM device, the 1+1 protection switching duration on the client side of the WDM device is longer than 50 ms. The optical power



### Differences Between Optical Modules SFP, SFP+, CFP, XFP, QSFP

Note that generally, QSFP28 modules cannot break through 10G links. But if the switch



supports it, inserting a QSFP+ module into a QSFP28 port is another case. In this case, QSFP28 can



### Comprehensive Guide to SFP, SFP+, SFP28, QSFP+, and QSFP28

Dive deep into the world of optical transceivers. Understand the differences between SFP, SFP+, SFP28, QSFP+, and QSFP28. Discover their specifications, working principles, compatibility,

### SFP vs SFP28 vs QSFP - Key Differences for Data

Learn the differences between SFP, SFP+, SFP28, QSFP, and QSFP28. Understand speed, channels, and applications for data centers and



### How do SFP, SFP+, and QSFP compare?

A single QSFP+ can replace 4 SFP+ transceivers resulting in greater port density. QSFP-DD, QSFP28, and QSFP56: QSFP-DD transceivers have the



## 100G QSFP28 Transceivers: Types, Specs and How to Choose

A complete guide to 100G QSFP28 transceivers covering types, specs, reach, compatibility, and how to choose the right module for data center and telecom networks.



## Optical Transceivers , Network Solutions for AI Cluster,

Explore how AI clusters are reshaping network architecture, from XPU-centric design to multi-plane scalability, and learn how 800G modules enable high-performance,

## QSFP28 vs QSFP+ Compatibility Guide , EDGE Optical

Learn QSFP28 and QSFP+ compatibility rules. QSFP28 ports support QSFP+ modules backward compatibility, but not forward. Essential networking



## The Ultimate Guide to SFP, SFP+, SFP28, QSFP+, and QSFP28:

QSFP28 ports support QSFP+ optics using 4x10G breakout. Forward Compatibility Risk: SFP+ modules cannot operate in SFP slots (voltage mismatch risks damage). Always verify host



## QSFP28 optical transceiver modules that use MPO connectors

QSFP28 modules are designed to operate with 4 channels of 25G (the "Q" stands for Quad) resulting in a combined bandwidth of 100G links. QSFP28 ports are also compatible to support QSFP+ which



## The Ultimate Guide to Cisco QSFP28 Transceiver Modules for 100G

Discover the wide range of high-density and low-power 100G Ethernet connectivity options offered by Cisco's QSFP28 transceiver modules for data center and high-performance computing

## QSFP28 vs SFP56: Key Differences, Specifications and

Although both modules support high-speed data transmission, they differ significantly in form factor, data rate, modulation technology, and application



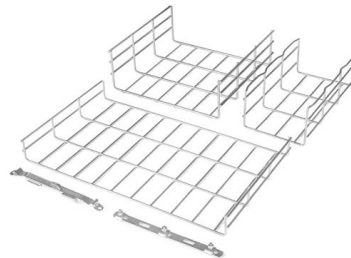
## Optical Transceivers , Network Solutions for AI Cluster,

This article explains that the 1.6T module provides a significant boost to the Rubin architecture, and that upgrading the network to 1.6T can maximize its performance.



## 100G QSFP28 Cable and Transceiver Modules Data Sheet , FS

The QSFP28-BIDI-100G Module supports link lengths of up to 75m (100m/150m) over OM3 (OM4/OM5) Multimode Fiber with duplex LC connectors. It complies with the QSFP28 MSA and IEEE 802.3bm



## Overview of QSFP28 LR4 Optical Transceiver

Discover FS's QSFP28 100G LR4 optical transceiver, offering low power consumption, perfect compatibility, and reliable long-distance performance

## What Is QSFP28? A Clear Explanation of 100G Transceivers

Compared with legacy 40G QSFP+ modules, QSFP28 provides 2.5× higher throughput within the same physical footprint, making it the dominant choice for spine-leaf data centers, cloud infrastructure, and





## QSFP28 Transceiver: Complete 100G Connectivity Guide (2026)

QSFP28 transceiver guide covering module types, pricing, compatibility, and deployment. Learn how to choose, deploy, and troubleshoot 100G QSFP28 optics.

## 100G Optical Module Selection Guide: Advantages and Types of QSFP28

Explore the QSFP28 100G optical module, a vital component for high-speed network connections. Discover its unique features, advantages, and various types to meet diverse

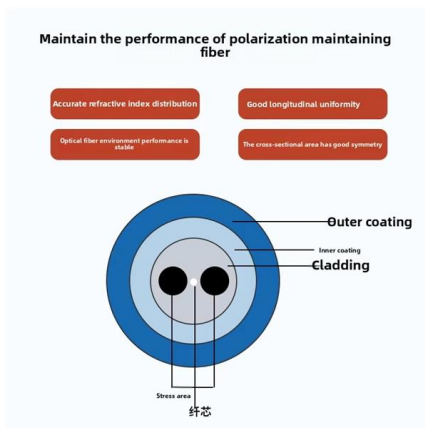


## SFP vs SFP+: A Complete Guide to Compatibility and

Explore the ultimate guide to SFP vs SFP+ compatibility, covering interoperability and backward compatibility of SFP+ modules for seamless high

## QSFP-DD vs QSFP28: Unraveling the Key Differences

Discover the key differences between QSFP-DD and QSFP28 optical modules in our comprehensive guide. Learn about their roles in high-speed data

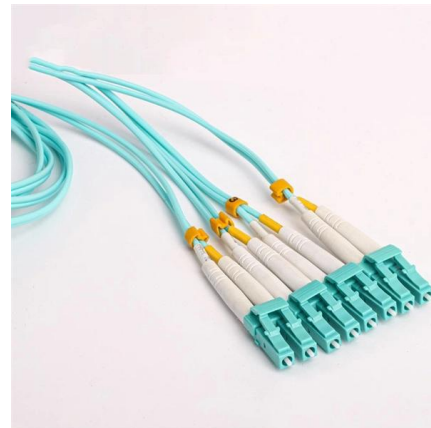


## 100G QSFP28 Cable and Transceiver Modules Data Sheet

The 100GBASE-PLR4 optical transceiver module supports link lengths of up to 10km over single-mode fiber (SMF) with MTP/ MPO-12 connector. This transceiver is compliant with SFF

## QSFP28 Transceiver: Complete 100G Connectivity Guide

No. QSFP28 modules require switch ports with 25G SerDes capability. 40G switches use lower-speed 10G SerDes, so they are unable to support higher speeds on multiple lanes needed by



## SFP, SFP+, SFP28, QSFP+, QSFP28, What Are the Differences?

They are all hot-pluggable optical modules that are used to connect network switches or other devices. Then, SFP vs. SFP+, SFP28 vs. SFP+, QSFP vs. QSFP28, what are their differences?



## Understanding the Difference Between SFP vs QSFP28:

Discover the key differences between SFP, SFP+, SFP28, and QSFP28 transceiver modules. Learn about compatibility, applications, and which



## SFP+, SFP28, QSFP+, QSFP28, QSFP56, QSFP-DD,

Initial Published: February 19, 2022 The optical transceiver plays a crucial role in modern fiber networking. Various high-speed transceiver types are

## 100Gb/s QSFP28 Transceivers

Amphenol's 100G QSFP28 optical modules include SR4, AOC, AOC break out, CWDM4, LR4, ER4 Lite, ER4 and ZR4 series, which adopt LC or MPO optical ports and are compatible with IEEE802.3bm,



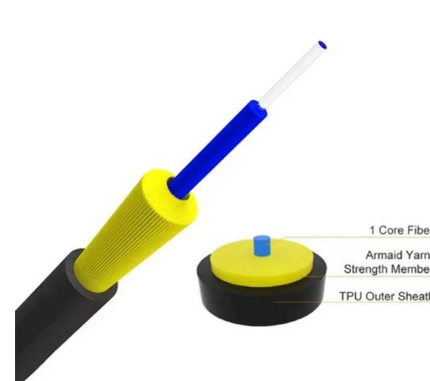
## SFP, SFP+, SFP28, QSFP+, QSFP28, What Are the

They are all hot-pluggable optical modules that are used to connect network switches or other devices. Then, SFP vs. SFP+, SFP28 vs. SFP+, QSFP



## What Is QSFP28? A Clear Explanation of 100G Transceivers

Learn what QSFP28 is, how 100G transceivers work, key standards, module types, and common deployment scenarios in modern data center networks.



## Contact Us

---

For datasheets, pricing, or custom telecom energy solutions, please visit:  
<https://www.koskolong.co.za>