



Adam Tas Corridor Energy

Guinea Core Switch



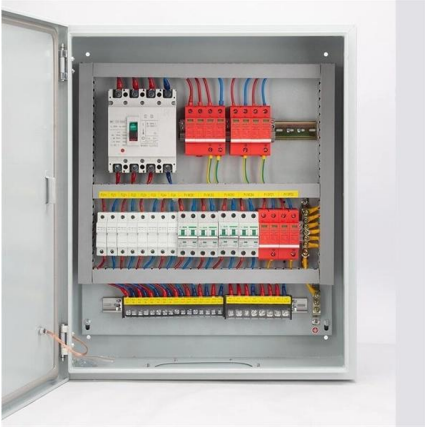


Overview

Includes dual power supplies, hot-swappable modules, link aggregation (LAG), and support for HSRP/VRRP. Modular chassis or stackable designs make it easy to scale as your network grows. The Guinean Government has taken control of the telecommunications operator Areeba Guinea, previously owned by the South African group MTN. In the realm of system networking, three key types of switches are frequently mentioned: access switches, aggregation switches, and core switches. A core switch is a high-performance network switch located at the core layer of the network architecture. Unlike access switches, which connect directly to end-user devices, the core switch focuses on aggregating and routing traffic between other switches, minimizing latency.



Guinea Core Switch



Core Switches: The Pillar of Network Infrastructure

Get a closer look at core switches: the nerve centers of network infrastructure that enhance performance and facilitate growth.

What Is a Core Switch in Networking?

Unlike access switches, which connect directly to end-user devices, the core switch focuses on aggregating and routing traffic between other



Conakry: lancement officiel du Switch Monétique et digital de la

La Banque Centrale de la République de Guinée a procédé ce mercredi, 15 janvier 2025 au lancement officiel du Switch Monétique et digital de la République de Guinée. Cette cérémonie

What Is a Core Switch in Networking?

What Is a Core Switch in Networking?
Understanding the Backbone of Your Network A



core switch in networking serves as the high-capacity



What is Core Switch and How to Choose?

Discover what a core switch is and learn how to choose the right one for your network. Explore key features in selecting a core layer switch. Make

What is a Core Switch?

What is a Core Switch? A Deep Dive A core switch is the backbone of a network, providing high-speed switching for data packets between different network segments; essentially, it's



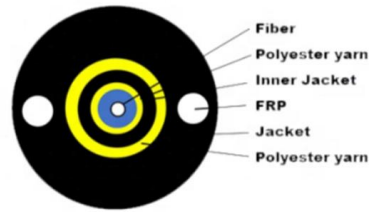
AfricaNenda collaborates with Guinea on digital public goods platform

Conakry, Guinea - September 12th, 2023 - AfricaNenda, an African-led organization dedicated to accelerating the growth of inclusive payment systems, is proud to announce its



COMMUNIQUÉ DE PRESSE

Ce switch national, une plateforme visant à transformer le paysage des paiements électroniques et à renforcer l'inclusion financière à travers tout le pays, a été conçu pour assurer l'interconnexion des



Understanding Core Switch: What It Is and How to

When selecting a core switch, it's essential to focus on several crucial aspects that can significantly impact the performance and reliability of your

What is a Core Switch , Functions and Difference over Normal Switch

What is a core switch and how it works? This article builds the basics of this kind of switch for the ones who don't know anything about it. What is a Core Switch? It is a powerful

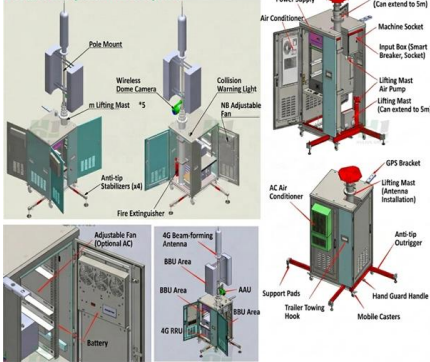


Was ist ein Core-Switch? Funktionen und Bedeutung

Erfahren Sie, was ein Core-Switch ist und wie er die zentrale Rolle in einem Unternehmensnetzwerk spielt. Unsere Erklärung bietet Einblicke in die



Product Composition Description



Guinea takes control of MTN Subsidiary Areeba Guinea,

This move asserts Guinea's sovereignty over its telecommunications sector, but the real challenge will be revitalising an operator that has fallen behind



AfricaNenda, Guinea PMO Launch National Switch POC

The partnership demonstrates the government's commitment to advancing financial inclusion in Guinea and harnessing the country's potential to drive innovation in digital payments.

Core Switch LANCOM CS-8132F

Core Switch mit 100G-Performance: Entdecken Sie den leistungsstarken LANCOM CS-8132F für maximale Ausfallsicherheit in verteilten Three-Tier-Campus





What is a Core Switch , Functions and Difference over Normal Switch

It is a powerful backbone switch in the center of the network core layer, which centralizes multiple aggregation switches to the core and implements LAN routing.

Core Switch vs. Distribution Switch vs. Access Switch

Comprehensive guide to Core, Distribution, and Access Switches. Roles in the network and important parameters explained.



EX9200 Ethernet Switch

The EX9200 campus and data center core Ethernet switches share a number of architectural elements. The Routing Engines employed by these switches run Junos OS, which processes all Layer 2 and

Guinée : Le switch national monétique et digital lancé pour faciliter

Le Switch national et digital est une plateforme centralisée qui connecte les différents acteurs de l'écosystème financier guinéen, notamment les banques, les institutions de microfinance



What Is a Core Switch?

A core switch is the backbone of a large-scale network, designed to handle massive volumes of traffic with ultra-low latency and maximum reliability. Sitting at the top of the hierarchical model, core

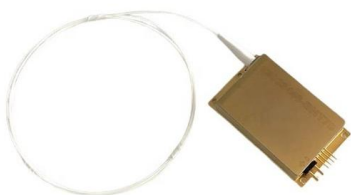
Cisco Dealer In Guinea , HPE Aruba Switch , Juniper Networks

Cisco Spares, Cisco Firewall, Cisco Switches or Cisco Refurbished Products In Guinea, we have got it all to meet your distinct requirements. Our products are authentic as we sourced them from



Switch National Monétique et digital : une réforme salubre, mais qui

L'accès au switch nécessite des infrastructures numériques adéquates (réseau internet, terminaux de paiement, etc.). Ce qui fait parfois défaut en République de Guinée surtout dans





What is Core Switch and How to Choose?

In this article, we will provide an overview of the core switch, its significance, and offer guidance on how to choose the right core switch for your



Automatic Core Cutting Machine

CORE PUSHOUT ASSAMBLEY: Automatic Servo Operated - 0.75 KW Servo Motor Driven INDUCTION MOTOR 0.75 HP & 0.5 HP,3 Ph.,415 Volt "RotoMotive" PNEUMATIC CYLINDER All Magnetic

Contact Us

For datasheets, pricing, or custom telecom energy solutions, please visit:
<https://www.koskolong.co.za>