



Adam Tas Corridor Energy

H3C with optical module plugged in cannot adjust optical port rate



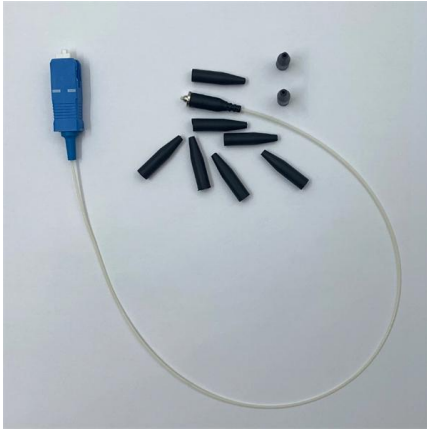


Overview

Execute the display interface command to identify whether the rate and duplex mode of the interface match those of the transceiver module. You can choose optical modules as needed for data transmission over optical fibers.



H3C with optical module plugged in cannot adjust optical port rate



H3C Fixed-Port Campus Switches Troubleshooting Guide

If the transceiver module is not operating correctly, replace it with a INTELBRAS transceiver module that matches the fiber port. For more information about transceiver modules and cables, see the

H3C All-Optical Network Technology White Paper-6W100

Network upgrade can be done simply by replacement with modules that have higher interface rates or even transceiver modules, allowing for easy expansion. H3C all-optical (iOptic) network solution



Optical Transceiver Manufacturer, H3C Switch

H3C switch configuration description: Due to the use of port parameters, the port will be taken as a reference, that is, at this time, port E0 / 1 only allows PC1 to access

How To Read Optical Module Information On H3C Switches

The following uses the Moduletek QSFP-40G-LR4 module connected to an H3C S6820 switch as an



example to introduce how to read information of the connected optical module on an H3C switch.

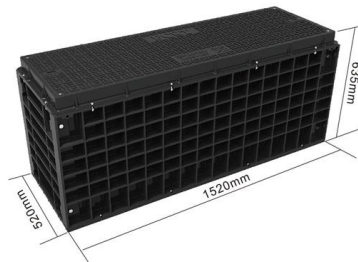


Support

Execute the display interface command to identify whether the rate and duplex mode of the interface match those of the transceiver module. If they do not match, configure the rate and duplex mode for

Optical Module Troubleshooting

Optical Modules on the Local and Remote Devices Cannot Communicate Fault Description
A switch is connected to a remote device through optical interfaces and optical fibers. The two optical ports are



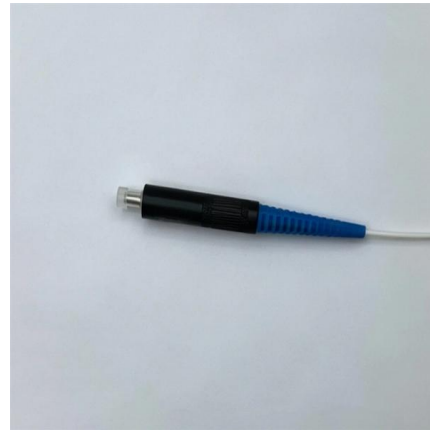
Support

You cannot set the transmission rate of a ten-GigabitEthernet or 100 Mbps Ethernet optical interface. For a 1000 Mbps Ethernet optical interface, you can only set the transmission rate to 1000 Mbps or auto



Optical Module Solutions for Huawei S5700/S5720 Series Switches

When using switches, we may encounter many confusions, such as what types of optical modules are needed for different models of Huawei switches, and how to resolve issues encountered



Support

Transmission distances provided by optical transceiver modules are mainly limited by certain loss and dispersion suffered during the transmission of optical signals over optical fibers.

Support

For more information about login methods and user interfaces, see H3C S10500X Switch Series Fundamentals Configuration Guide. Accessing the switch for the first time The first time you access



Support

Troubleshooting transceiver modules Transceiver module issues Optical interface coming up failure Symptom An optical interface installed with a transceiver module cannot come up. Common causes ·



H3C S1600V2 Switch Series Web Configuration Guide

Port Rate Limit
.....
.....



Support

Align the module with the fiber port and push it gently into the port until you feel it snaps into place. Transceiver modules and fiber ports have disorientation rejection structures.

H3C Fixed-Port Campus Switches Troubleshooting Guide-6W104

If rate limit is configured on the port, make sure the committed information rate (CIR) and the committed burst size (CBS) are appropriate. To adjust the CIR and CBS values, execute the qos lr { inbound ,





What Can I Do If a Message Is Displayed Indicating that an Optical

This field indicates whether the rate of the optical module installed on the port matches the port rate. For example, if a non-XGE optical module is installed on an XGE port, the rate of the optical module

How to view the optical module DDM information on

View the optical module information on Huawei switches and H3C switches through the command



Support

H3C fiber network cables are Active Optical Cables (AOCs) terminated with transceiver modules. H3C copper network cables include Active Copper Cables (ACCs) and Direct Attach Cables (DACs),

H3C S6890 SERIES TROUBLESHOOTING MANUAL Pdf Download

View and Download H3C S6890 Series troubleshooting manual online. S6890 Series switch pdf manual download.

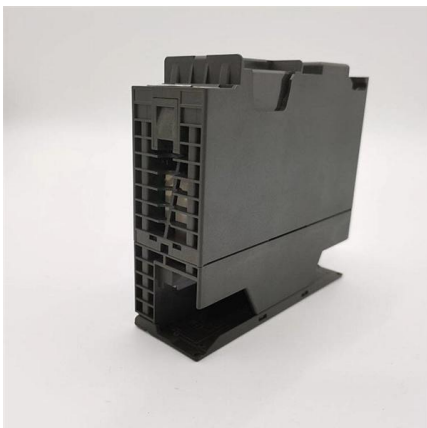


H3C S6805 SERIES TROUBLESHOOTING MANUAL

If the transceiver module is not operating correctly, replace it with an H3C transceiver module that matches the fiber port. For more information about transceiver

Support

Troubleshooting transceiver modules
Transceiver module issues
Optical interface coming up failure
Symptom An optical interface installed with a transceiver module cannot come up.



Support

QoS configuration: includes rate limit, port priority, and default 802.1p priority on the port;
STP configuration: includes STP enable/disable status on the port, link attribute on the port (point-to



H3C S7500X SERIES INSTALLATION MANUAL Pdf Download

View and Download H3C S7500X Series installation manual online. S7500X Series switch pdf manual download. Also for: S7503x, S7506x-poe, S7510x-poe.



H3C S6890 SERIES TROUBLESHOOTING MANUAL Pdf Download

If the transceiver module is not operating correctly, replace it with a new H3C transceiver module that matches the fiber port. For more information about transceiver modules, see the installation guide for

Support

Use the display port display transceiver-information interface command to display information about a specified optical port. This command will display the following information about



Knowledge Base

Solution Troubleshoot the link, and if the link is normal, replace the optical module for testing.



QSFP-40G-SR-BD To View Optical Module Information On H3C

Enter the command "display interface HundredGigE 1/0/29" to view the link information of the switch port (port number: 1/0/29) into which the optical module is inserted, mainly including the



Support

Use the undo alarm port bit-error-rate enable command to disable the port bit error rate alarm. When both the total number of error bits and bit error rate of the data transferred between the OLT and

Support

I QoS configuration: includes rate limit, port priority, and default 802.1p priority on the port; I STP configuration: includes STP enable/disable status on the port, link attribute on the port (point-to-point





Contact Us

For datasheets, pricing, or custom telecom energy solutions, please visit:
<https://www.koskolong.co.za>