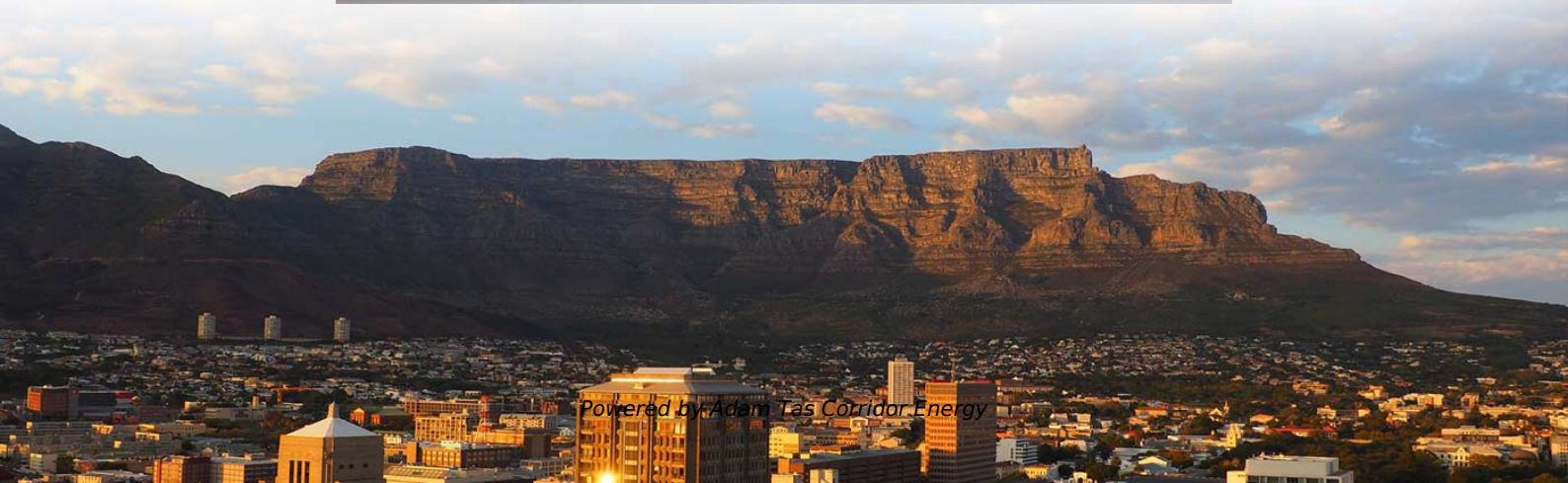




Adam Tas Corridor Energy

Height of surface-mounted power distribution box from the ground





Overview

The proper installation of a distribution box involves placing it at the right height to ensure safety and convenience. The National Electrical Code (NEC) provides comprehensive safety standards for electrical installations, including requirements for electrical panels (main service panels and subpanels or breaker box). For higher capacity voltage breaker boxes, the panel itself should follow the standard height - between 36 to 48 inches off the ground.



Height of surface-mounted power distribution box from the ground

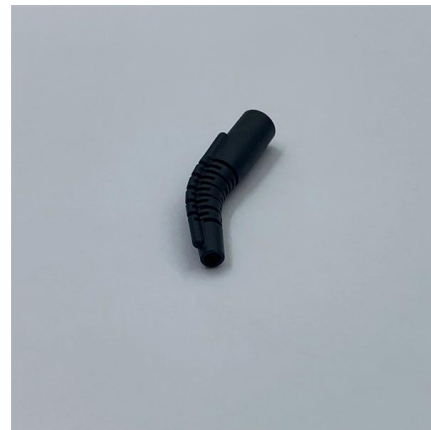


electrical

How far off the floor should my circuit breaker box be? I'm changing from a 100 to a 200 amp. The lead in wires are underground and come into the bottom of box making them too short to

Wall-Mounted vs. Floor-Mounted Distribution Boxes:

Compare wall-mounted vs. floor-mounted distribution boxes. Learn their key differences, uses, pros & cons to choose the right one for your space



The installation requirements for the distribution box

A distribution box is the heart of any electrical system. It takes the incoming power and safely distributes it to different circuits throughout your

Size determination, installation method and wiring mode

The distribution box is the central hub of the home circuit and the general control of our daily



power consumption. It is an indispensable electrical equipment. If there



inside

1.5 CPWD for last several decades have been following modern practice for substation and power distribution. While the whole nation has been following pole mounted transformers and overhead



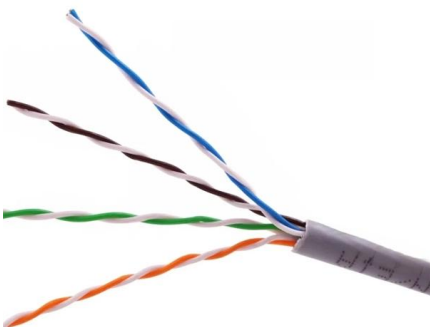
What is the Ideal Installation Height for a Distribution Box

Install a distribution box at 4.5 to 5.5 feet high for safety, accessibility, and compliance. This height ensures easy use and protection from hazards.



Installation points of household distribution box

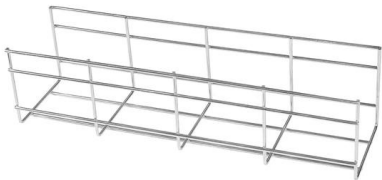
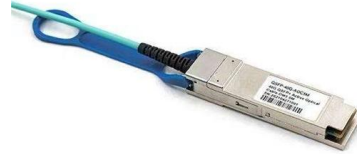
1. There are two types of domestic distribution box: metal shell and plastic shell. They are exposed type and concealed type. The box must be in good condition.





NEC Requirements for Panelboards and Load Centers

A panelboard with a height of 5 feet, 6 inches is mounted 18 inches above the floor. This brings the total height of the top of the panelboard to 7 feet (84 inches) from



Installation Height And Location Selection Requirements For Ground

The distance between the distribution box and the switch box should not exceed 30 meters, and the horizontal distance between the switch box and the fixed electrical equipment it controls should not

Requirements And Specifications For Installation Of

The bottom edge of the distribution box is usually between 1.5 meters and 1.8 meters above the ground, which is convenient for operation and



Safe Clearances for Electrical Equipment: Working

Height clearance: The minimum headroom in front of the equipment is 6½ feet, or the height of the equipment itself, whichever is greater. At no point



Standard Heights for Electrical Switches , PDF , Ac

This document provides standard heights for various electrical switch boards and fittings in different rooms of a house. It lists the ideal heights in millimeters from



Key Points Of Installation And Collocation Of Distribution Box In

The vertical distance between the bottom surface of the fixed distribution box and switch box and the ground shall be greater than 1.3m, less than 1.5m The vertical distance between the bottom of



NEC Requirements for Panelboards and Load Centers

NEC Requirements for Electric Main Panelboards and Working Space Depth and Mounting Height. Width, Depth and Height for Panels - NEC 110.26





I.S.10101 Bitesize Guide

Section 530.6.2.3 states that a wall-mounted distribution board shall be mounted at a height not greater than 2.15m measured from the floor to the top surface of the highest protective device.

CHAPTER 7 DESIGN FOR DISTRIBUTION FACILITIES

Necessary height of the feeder conductors above the ground can be secured under the largest sag. Necessary clearance between the feeder conductors and buildings, other electrical wires or trees



What is the installation height of distribution box?

The height of the bottom of the box should not be less than 1.0m from the ground, and measures should be taken to prevent climbing. All the distribution boxes should be good protected

The installation requirements for the distribution box

Ensure safe placement: install in dry, accessible areas with good ventilation and at appropriate height (typically ~1.5m). Practice good wiring:



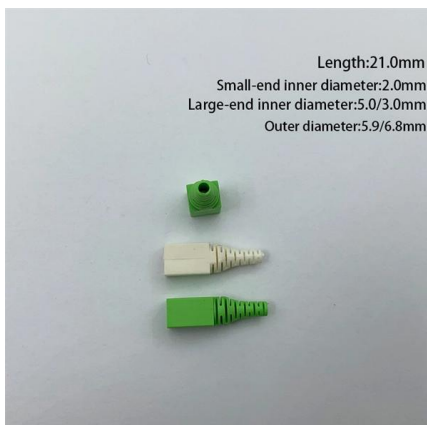
Heights of Electrical Equipment in Dwellings

The aim of this topic is to explain the requirements of BS 7671, Part M of the Building Regulations for England and Wales and BS 8300: 2009 (Design of



Distribution boards components

Service cable ducts or conduits, surface mounted or in cable chases embedded in the wall Note: to facilitate future modifications to the installation, it is recommended to keep all relevant



Electrical Panel Mounting Requirements (Dictated by the

In the same vein, the height of the electrical panel must not be more than six feet seven inches from the ground. The panel door must also be capable



2013 48 Autumn Wiring Matters

TP& N distribution boards there used to be a regulation in BS 7671 that recommended a mounting height not exceeding 2250mm to the top and not less than 1400mm to the underside of a distribution board.



Electrical Panel Mounting Requirements (Dictated by the

In response, I always tell them that the common requirement is simple: it should be located in unfrequented areas, should have spacious clearance, and

Electrical Panel Mounting Height Requirements: General

The work space shall be clear and extend from the grade, floor or platform to a height of 6 1 / 2 feet or the height of the equipment, whichever is greater.



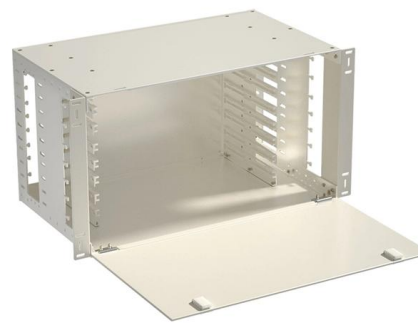
What is the code minimum height for an electrical panel?

The National Electrical Code (NEC) does not specify a minimum height for an electrical panel, although practical access for service should always be considered. But there is a maximum



Height of Breaker Box - Important Things to Know

Want to know the minimum and maximum height of a breaker box? Read the USA installation guidelines here today!



Contact Us

For datasheets, pricing, or custom telecom energy solutions, please visit:
<https://www.koskolong.co.za>