



**Adam Tas Corridor Energy**

# **Height of the 60-degree sloping side of the cable tray**





## Height of the 60-degree sloping side of the cable tray

---

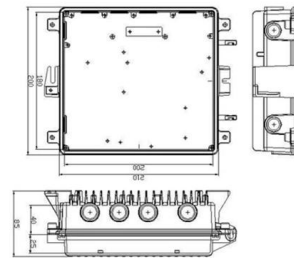


### Cable Tray Spacing Standards for Installation and Safety

The Importance of Cable Tray Spacing in Electrical Infrastructure Cable tray spacing is a critical aspect of electrical infrastructure, influencing both

### Cable tray manual

All the technical information developed by the 1973 NEC® Technical Subcommittee on Cable Tray for Article 318 - Cable Trays was based on cable trays with side rails and this technical information is still



### Explaining NEC Article 392 on Cable Trays

NEC Article 392 explains cable trays, their components, appropriate wiring methods for cable trays, and instances where they are and are not

### A Guide to Installing and Supporting Electrical Cable Trays

A professional guide to installing electrical cable tray systems per NEC Article 392. Covers

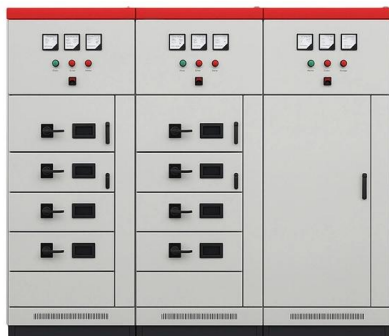


support, securing cables, and fill calculations.



### Tray and Ladder Sizing by Cable Capacity Calculator - IEC

Calculate tray and ladder sizes by cable capacity with our IEC-compliant calculator for efficient and accurate electrical installations.



### GENERAL INFORMATION

In vertical installations, the weight of the suspended cable creates a tensile load on itself and is the factor, from a cable perspective, that limits the height of vertical installation for a tight buffer cable.



### Cable Tray Technical Guide A practical guide to product selection and

A practical guide to product selection and installation This guide for engineers and installers has been developed by ABB as a practical reference regarding cable tray characteristics, installation, and



## B-Line series Cable Tray Design Considerations

Is your cable tray system optimized for safety, dependability, space and cost savings? Cable tray (or cable ladder) systems are a popular alternative to electrical conduit systems, as they have an



## Guide to cable support systems

Side heights of 35, 60, 85 and 110 mm are available, through to special cable tray systems with a 30% perforation amount and large insertion and exit points. Depending on the system, screwable or

## SECTION 260536

Include scaled cable tray layout and relationships between components and adjacent structural, electrical, and mechanical elements. Show the following: Vertical and horizontal offsets and



## Know the Code: Cable Railing

Understand cable railing code for decks and stairs: guard & handrail heights, 4-inch and 6-inch sphere rules, post & cable spacing, load requirements, and proper



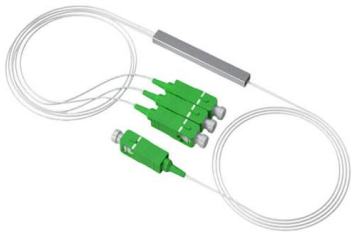
## IEC Standard for Cable Tray: Complete Technical Guide

It applies to cable trays made of steel, stainless steel, aluminum, or other metallic materials. The standard ensures these systems can handle the



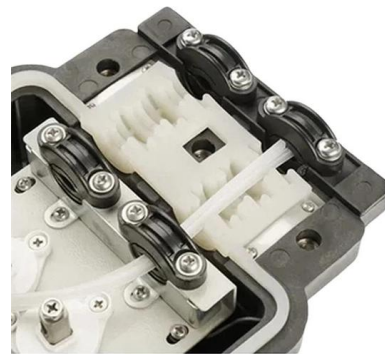
## SECTION 26 05 36 CABLE TRAYS FOR ELECTRICAL SYSTEMS

Designer shall provide a 12" vertical working clearance above the cable tray with no continuous obstructions. In addition, a 12" space must be provided on either side for working access.



## Cable Tray Support Spacing: Key Guidelines Explained

Explore the essential cable tray support spacing requirements for safe and efficient installations. Learn NEC guidelines for perforated, ladder, and wire





## Complete cable tray manual for electrical engineers and

How to design cable tray? Most projects are roughly defined at the start of cable tray design. For projects that are not 100 percent defined before design start, the cost

### B-Line series Cable Tray Design Considerations

If these cables above would completely fill a 30-inch wide cable tray, selecting a 36-inch wide tray in your design would make space available for future cables.



### TECHNICAL AND SIZING DATA

Unitray manufacturers elbows, tees, and crosses in all widths and heights. These products are available in 4 radii (305 mm, 610 mm, 915 mm and 1220 mm) and 4 degrees (30, 45, 60, and 90). With the

### Best Practice Guide to Cable Ladder and Cable Tray Systems

This guide covers cable ladder systems, cable tray systems, channel support systems and associated supports intended for the support and accommodation of cables and possibly other electrical





## IEC Standard for Cable Tray: Complete Technical Guide

IEC Standard for Cable Tray: Complete Technical Guide The International Electrotechnical Commission (IEC) provides detailed guidelines for

## CABLE TRAY SYSTEMS GUIDE

Some applications may require the cable tray to support the weight of a single, dead object in addition to the cable loads. Specifications typically require this to be applied at the midpoint of the span between



## GUIDE CABLE TRAYS TECHNICAL

NEMA VE 1-2017 Specifies requirements for metal cable trays and associated fittings designed for use in accordance with the rules of Canadian Electrical Code, Part I and the National Electrical Code®

## TECHNICAL AND SIZING DATA

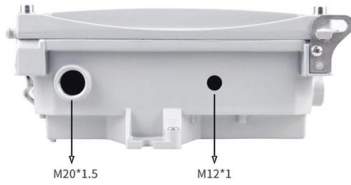
By loading this tray more heavily, the designer must be careful not to exceed the total cable capacity as outlined in the Canadian Electrical Code (See following section on ladder tray sizing).





## Mastering Cable Tray Installation , Step-by-Step Guide for a Seamless

Learn how to install cable trays correctly. Get the ultimate step-by-step guide on setting up a seamless and reliable cable management system.



## Cable Tray Width, Dimensions and Specifications as per

Learn about cable tray width dimensions and specifications as per NEC standards. Understand types, sizes, materials, and installation guidelines for safe and

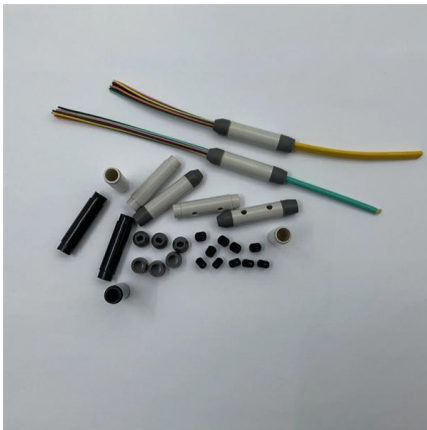
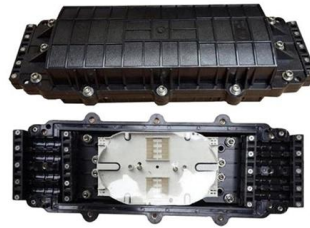


## Cable Tray Design and Sizing Guide

The document discusses several key factors to consider when designing a cable tray system, including: 1) The width and height of the tray, type of tray bottom (ladder, ventilated, or solid), and type of

## Cable Tray SHIB NAL

Cable trays are not raceways, but they are treated as a structural component of a facility's electrical system. Cable trays are a part of a planned cable management system to support, route, protect and

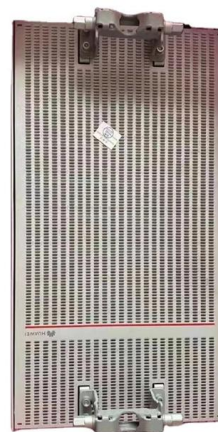


### **cable tray system**

A cable tray system is an assembly of metallic cable tray sections and accessories, that forms a rigid structural system to support cables.

### **Best Practice Guide to Cable Ladder and Cable Tray Systems**

The radius for cable ladder and cable tray fittings is usually determined by the bending radius and stiffness of the cables installed on the cable ladder or cable tray.



## **Contact Us**

---

For datasheets, pricing, or custom telecom energy solutions, please visit:  
<https://www.koskolong.co.za>