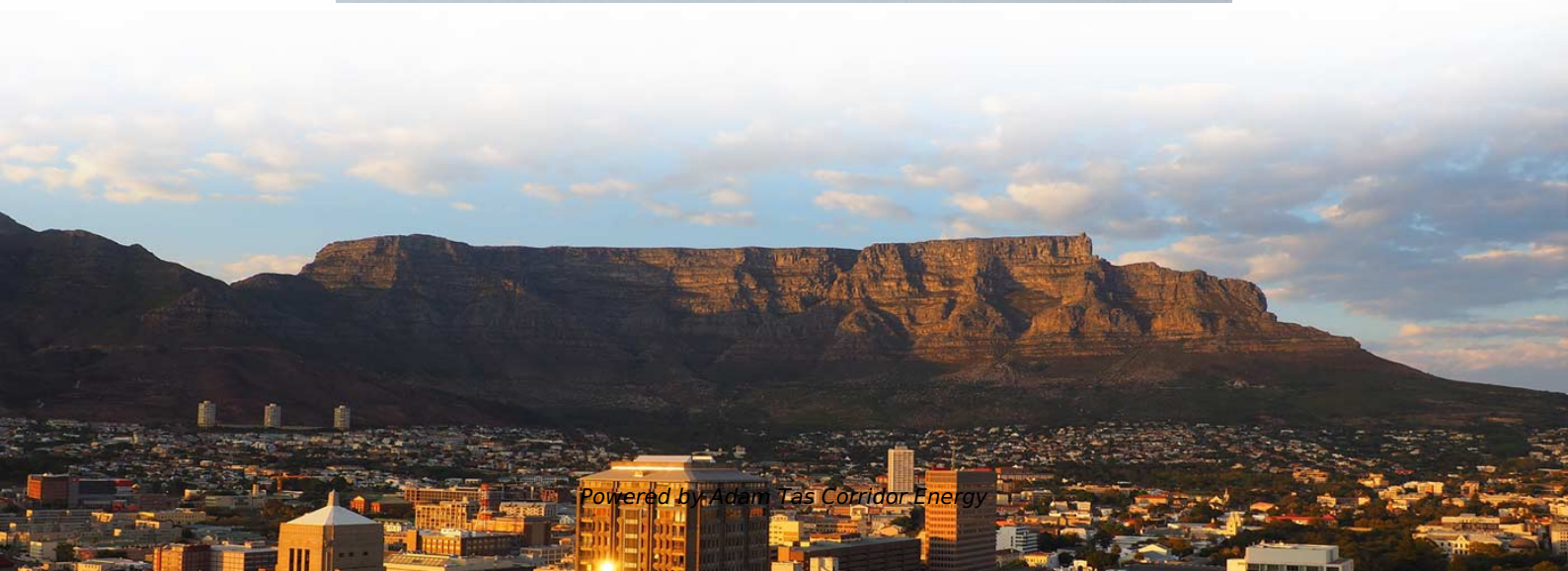
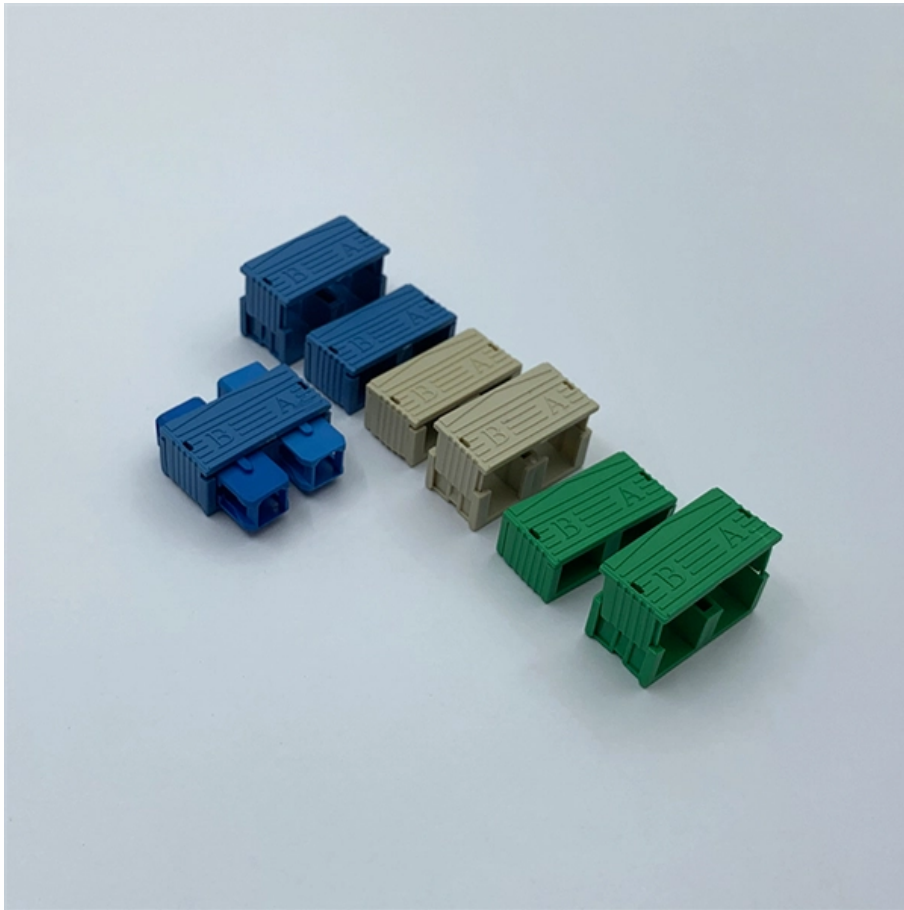




Adam Tas Corridor Energy

High Voltage Marking on Distribution Box





Overview

" The marking shall be on the outside of the box cover and shall be readily visible and legible. 303 (e) (1) (ii)Our conductor marking light, destined to signalize the High Voltage Lines is, by its technology, a unique product on the market. Indeed, our light is built around induction, it takes its power from the current of the line, by the intermediary of a multi-winding coil directly installed within the. This standard describes requirements for numbering and labeling of real property electrical distribution equipment, circuits, and site lighting at Lawrence Livermore National Laboratory. HellermannTyton Pre-Printed Voltage Markers are made of durable vinyl and are available with the most commonly used warnings and alerts.



High Voltage Marking on Distribution Box



Understanding the Importance and Safety Features of High-Voltage

As more folks start adopting high-voltage setups, it's really important for everyone--stakeholders, engineers, operators alike--to understand how vital these distribution

Re: Marking of Electrical Equipment

Electrical Equipment Did You Know? Proper labelling at all distribution points, circuit breakers, fuses and switches is required during installation, as well as whenever .



Complete Guide to Electrical Panel Labels

There are many regulations that apply to electrical panel labels as well as tagging and labeling of related equipment. Here's what you need to know.

Electrical Panel Labeling Standards: Easy Guide

Electrical panel labeling standards come from many regulatory agencies, so it's important to



learn about the specific requirements that apply to your workplace.



Voltage Markers and Safety Signs

The self-adhesive markers allow users to clearly identify electrical lines, voltages and hazards. The durable adhesive backing is resistant to UV exposure as well as chemicals and solvents. Use voltage

Electrical Safety Labels - Voltage & Hazard Warning

Each label features clear safety symbols, voltage markings, and warning text to alert staff and visitors to potential electrical dangers. From "Danger - 415 Volts" to



| | |
|-------------------|--------------------------------------|
| PRODUCTION NAME | Frequency conversion control cabinet |
| PROTECTION DEGREE | IP55 |
| VOLTAGE | 220/380V |
| SIZE | customized as required |
| MOUNTING WAY | Floor -standing |
| APPLICATION | Indoor and outdoor |

What are the Requirements for Electrical Panel Labeling?

The labels that are required for electrical boxes will usually focus on two things. The first is going to be safety-related labels. This could be something like a label to indicate how many volts are on a



Voltage Markers & Electrical Labels , Shop Heavy-Duty

Built from heavy-duty industrial vinyl with high-bond adhesive options, Emedco voltage markers are designed to withstand structural stress and chemical

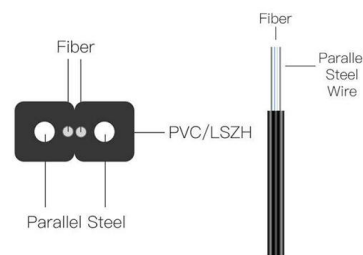


Electrical Enclosure Safety Signs , Clarion Safety Systems

More substantive, explanatory text is added to yield a more informative sign when compared to the old "DANGER - HIGH VOLTAGE" signs. Know that you can customize your

High Voltage Signs , Danger Signs , ElecDirect

High Voltage and Safety Signs Mark your panels and protect your work area with high voltage and danger warning signs. LSP - This custom cast gloss vinyl, self



Electrical Panel Labeling: Clear & Simple Compliance

Learn electrical panel labeling standards, requirements & best ways to label an electrical panel for safety, compliance, and easy identification.



Electrical Safety Signs & Labels: OSHA Compliant

Enhance electrical safety in your workplace with our comprehensive range of OSHA-compliant signs, labels, and markers. From high voltage warnings to arc flash



Breaker Box Labeling: Step-by-Step Safety & Efficiency

Master breaker box labeling for safer electrical systems. Follow our expert step-by-step guide for efficient troubleshooting and maintenance.



Delta Box Conductor Marking Light for High Voltage Lines

Delta Box offers a unique conductor marking light specifically designed for high voltage lines. The system employs induction technology to derive power directly from the line via a multi-winding coil



Circuit Numbering and Labeling for Electrical Equipment

Using labels provided by CMSG, mark equipment likely to require examination, adjustment, servicing, or maintenance while energized reminding building occupants to maintain clear space as required by



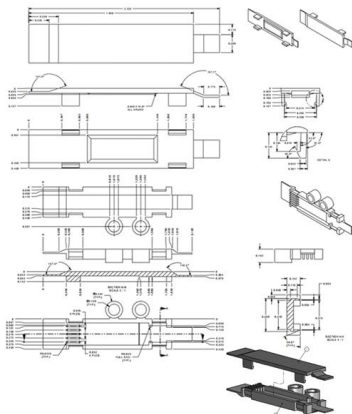
High Voltage Signs

Browse high voltage warning signs for electrical hazards, arc flash & restricted areas. OSHA-compliant designs built for durability and safety.



Electrical Panel Labels - NFPA 70E Safety Compliance

Electrical panel labels ensure NFPA 70E compliance, mark voltage, hazards, and circuits, improving safety, maintenance efficiency, and OSHA





Electrical Equipment Labeling: Safety Guide , Highland

Properly labeling electrical equipment such as circuit breakers, switches, junction boxes, and machines helps ensure safety and efficient



Markings for High Voltage Line

Delta Box provides a wide range of equipment for High Voltage Lines. LBIA beacons, warning spheres, SOLEO. Review our product catalogue on line!

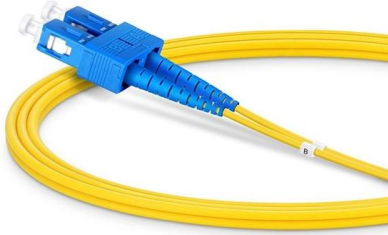
Conductor marking light High Voltage Line , Delta Box

Conductor Marking Light for High Voltage Lines
Our conductor marking light, destined to signalize the High Voltage Lines is, by its technology, a unique



Conductor marking light High Voltage Line , Delta Box

Our induction beacon complies with the ICAO regulations (Annex 14, chapter 6) and is used as a conductor marking light for High Voltage Lines. For lines located



High-voltage power distribution box design resources , TI

View the TI High-voltage power distribution box block diagram, product recommendations, reference designs and start designing.

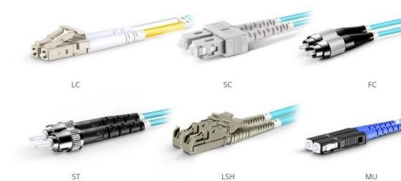


Re: Marking of Electrical Equipment

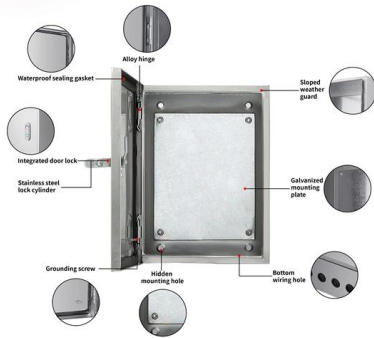
Clear and accurate labelling directly impacts safety. When panels and disconnects are labelled properly, electricians and technicians can quickly isolate, verify and safely work on equipment. If panels and

Design requirements and standards for low voltage

Regularly inspect and maintain your distribution box to catch issues early and ensure safe operation. Design requirements for low voltage distribution



OM3 Fiber Patch Cable Family



Indoor/Outdoor High Voltage Signs

When it comes to Indoor/Outdoor High Voltage Signs, you can count on Grainger. Supplies and solutions for every industry, plus easy ordering, fast delivery and 24/7 customer support.

WORK ON HIGH VOLTAGE PLANT AND APPARATUS

To secure the safety of persons working on SSEN-D High Voltage Plant and Apparatus, it is essential that all activities carried out on the High Voltage System are effectively planned, controlled and co



Contact Us

For datasheets, pricing, or custom telecom energy solutions, please visit:
<https://www.koskolong.co.za>