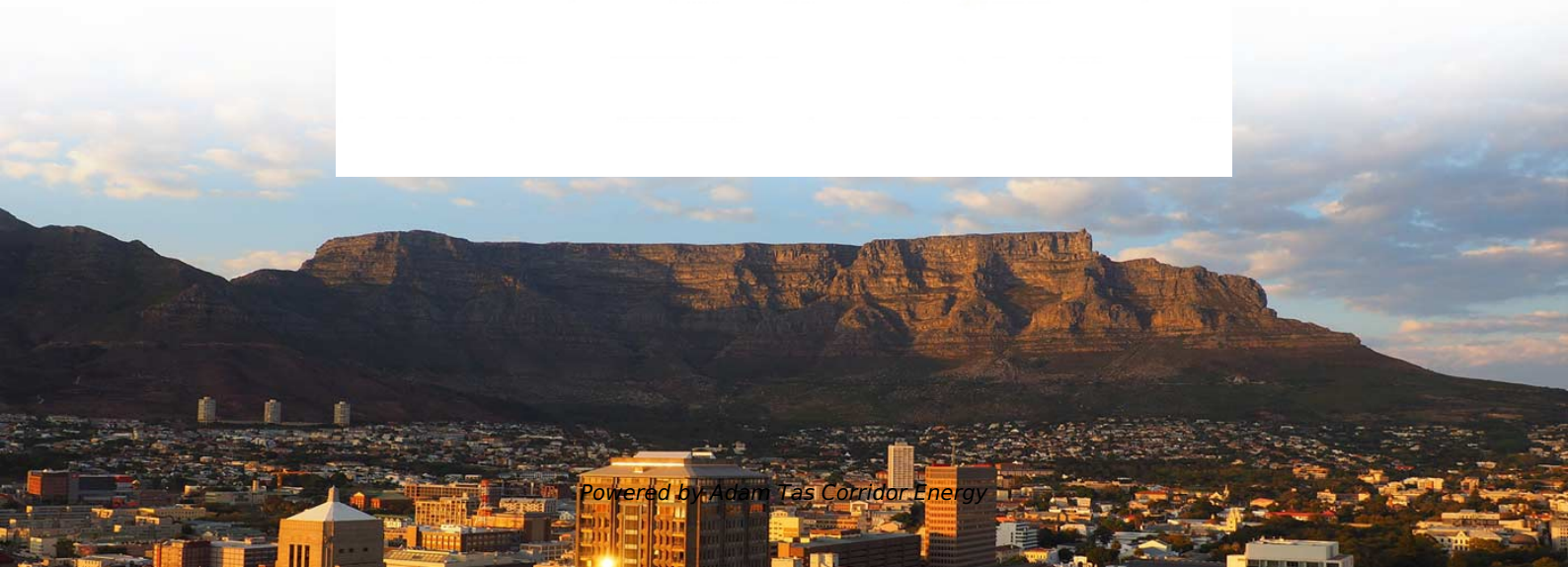
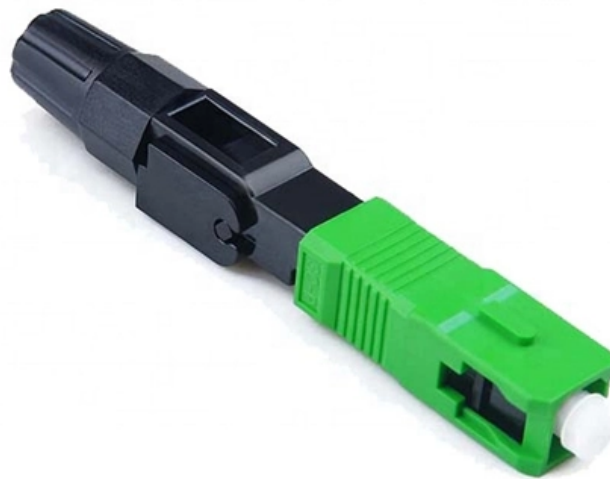




Adam Tas Corridor Energy

High-frequency switching power supply a best-selling model used in industrial park networks





High-frequency switching power supply a best-selling model used in



High-frequency power supply

SW21 switching power supplies are direct current converters made for industrial applications with high frequency PWM control and use of IGBTs. Designed and built for

High-Frequency Switching Power Supplies: Theory and

Publisher : McGraw Hill Higher Education
Publication date : January 1, 1984 Language : English
Print length : 256 pages ISBN-10 : 0070109494



High-frequency power supply

Find your high-frequency power supply easily amongst the 52 products from the leading brands (Kikusui, Voita, Wisman,) on DirectIndustry, the industry



A Review of High Frequency Power Converters and Related Technologies

Development of power electronic converters tend



to achieve high efficiency and at the same time high power density in many industrial applications. In recent years, with emerging third



What is High-Frequency Switching Power Supply?

A high-frequency switching-mode power supply (HF-SMPS) converts AC or DC input into tightly regulated DC output by switching transistors on and off tens-of-thousands of times per

The Tech Vortex

Hier sollte eine Beschreibung angezeigt werden, diese Seite lässt dies jedoch nicht zu.



Power supplies

The circuit uses push pull power switching driving a high frequency transformer, which fully isolates the output circuit from the input. The output is short circuit protected, and the output voltage can be



Modeling and Simulation of High-frequency Switching Power Supplies

Introduction High-frequency switching power supplies have become integral to modern electronic systems due to their ability to efficiently convert electrical energy with minimal losses. These power



Switching Power Supply: A Complete Technical Guide to Efficiency

Switching power supplies (SMPS) have become a cornerstone of modern electronics, powering everything from consumer devices to industrial machinery. Unlike switching power supply

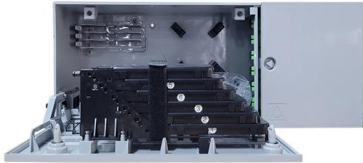
Black Friday Deals 2025 , Amazon

Black Friday is an Amazon deal event from November 20-28. Shop on Amazon and prepare your holidays with epic deals from top brands on this seasons' must-have



What Is a Switching Power Supply (SMPS)? , Tektronix

Discover what a switching power supply (SMPS) is and how it efficiently converts AC to DC using high-frequency switching. Learn its



Evolution of Very High Frequency Power Supplies

The ongoing demand for smaller and lighter power supplies is driving the motivation to increase the switching frequencies of power converters. Drastic increases however, come along with



Switch mode power supply (SMPS)

A Switch Mode Power Supply (SMPS) is a power supply that efficiently converts electrical power from one form to another using high-frequency switching. It is

Switched Mode Power Supplies

Therefore, the transistor acts as a standard switch. The result is an input voltage negate that uses one or more switched-mode power supplies, phase down, phase up, and three basic switched-mode





可选配件



Integrated Very-High-Frequency Switch Mode Power Supplies: Design

This paper presents a design for a 9-W class E resonant power converter in a 0.18-mm CMOS process. The converter is driven by a self-oscillating gate drive, which is presented in an in

High-frequency Switching Power Supplies

ac line base drive bipolar transistor block diagram Bode plot calculated capacitance capacitor C? clamp collector current Comp core Courtesy Unitrode Corporation Cout creepage crossover frequency

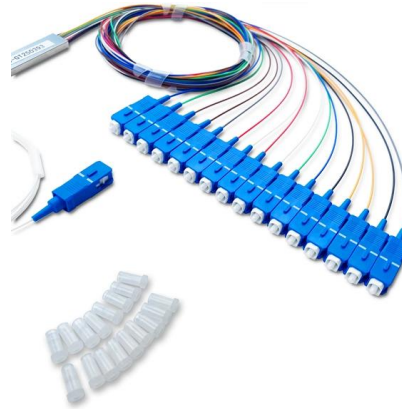


What Is a Switching Power Supply (SMPS)? , Tektronix

Unlike linear power supplies, which regulate voltage through continuous dissipation (like a water tap constantly throttled down), a switching

high frequency switching power supply

Even as power electronics evolve rapidly, one "old-timer" has remained essential in industrial applications--power plants, substations, and rail systems: the industrial frequency (IF) charger.



High Frequency Switching Power Supplies

Description: The Series CC1000 is a range of high performance, high reliability capacitor charging power supplies intended for use as a component power supply in medical and industrial environments.



Modeling and Simulation of High-frequency Switching Power Supplies

The growing demand for smaller, lighter, and more efficient electronic devices has spurred significant research into the modeling and simulation of high-frequency switching power supplies.



Integrated Very High Frequency Switch Mode Power

This paper presents a power supply using an increased switching frequency to minimize the size of energy storing components, thereby addressing





Switched-mode power supply

Switched-mode power supplies can also be substantially smaller and lighter than a linear supply because the transformer can be much smaller. This is because it



Contact Us

For datasheets, pricing, or custom telecom energy solutions, please visit:
<https://www.koskolong.co.za>