



**Adam Tas Corridor Energy**

# **High-precision imported Jordanian reconfigurable optical add-drop multiplexers wholesale**





## High-precision imported Jordanian reconfigurable optical add-drop

---

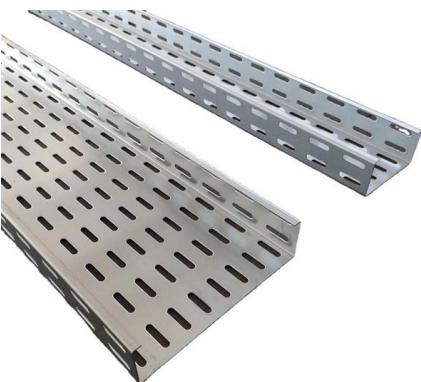


### Reconfigurable optical add-drop multiplexer based on

Reconfigurable optical add-drop filters in future intelligent and software controllable wavelength division multiplexing networks should support hitless wavelength switching and gridless

### A Flexible and Reconfigurable Optical Add-Drop Multi

The proposed device is reconfigurable and scalable, and thus, it is expected to be used for optical data processing in the mode-division multiplexing



### Integrated reconfigurable optical add-drop multiplexers based on

We report on an eight-channel reconfigurable optical add-drop multiplexer based on cascaded microring resonators with a high tuning power consumption and a compact footprint.

### Optical Add-Drop Multiplexer (OADM) Explained

Learn about Optical Add-Drop Multiplexers (OADM), key components in WDM optical



networks. Understand their function, architectures (parallel, serial, band



### **Optimizing performance in elastic optical networks using advanced**

Thus, this study successfully introduced a novel high-degree cluster node with versatile add-drop functionality. The novel concept was scalable, utilizing customers' pre-existing chassis and

### **Reconfigurable optical add-drop multiplexer**

In optical communication, a reconfigurable optical add-drop multiplexer (ROADM) is a form of optical add-drop multiplexer that adds the ability to remotely switch traffic from a wavelength-division



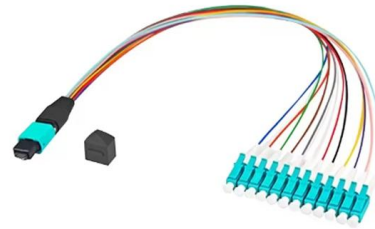
### **Fully reconfigurable optical add-drop multiplexer based on parallel**

Reconfigurable optical add-drop multiplexer (ROADM) with the ability of dynamic configuration will be one of the core equipment for the future optical transport networks. This paper



## Design of reconfigurable optical add/drop multiplexer based on two

A reconfigurable optical add/drop multiplexer (R-OADM) device is proposed based on 2-D photonic crystals (2-D PCs) with a triangular lattice of air holes. It consists of channel add/drop filters,



## Reconfigurable Optical Add-Drop Multiplexer Module

Reconfigurable optical add-drop multiplexer (ROADM) market to reach \$4.79 billion by 2030 at 14% CAGR, driven by growing high-speed internet demand.

## Subsea Reconfigurable Optical Add-Drop Multiplexer (ROADM) Global

The subsea reconfigurable optical add-drop multiplexer (ROADM) enhances network flexibility and scalability, allowing operators to optimize data flow in real time and maintain high



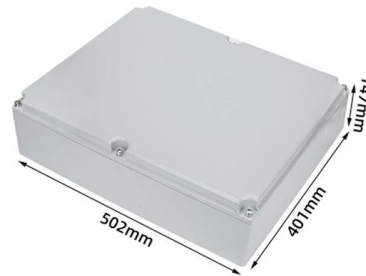
## Reconfigurable Add/Drop Multiplexer Design to Implement

Reconfigurable optical add-drop multiplexer (ROADM) is a key network element enabling flexible handling of wavelengths. Its architecture allows for remote traffic provisioning at the



### **Opto-VLSI-based integrated reconfigurable optical add-drop**

Abstract In this paper, we propose a novel integrated reconfigurable optical add-drop multiplexer (RODAM) structure based on using an Opto-VLSI processor and a 4-f imaging system.



### **Optoplex 3 Port Tunable Filter**

Optoplex's Reconfigurable Optical Add/Drop Multiplexer (ROADM) module, also known as Tunable Optical Add/Drop Multiplexer (TOADM), is based on a

### **Reconfigurable optical add-drop multiplexers**

G02B26/0816 Optical devices or arrangements for the control of light using movable or deformable optical elements for controlling the direction of light by means of one or more reflecting





## 192-channel silicon Reconfigurable Optical Add-Drop Multiplexer

We have designed and demonstrated a 192-channel silicon Reconfigurable Optical Add-Drop Multiplexer (ROADM) for multi-dimensional multiplexing systems. The prop.



## Reconfigurable optical add/drop multiplexer

A reconfigurable optical add/drop multiplexer (ROADM) is a node device in an optical fiber communications network. A basic function of the reconfigurable optical add/drop multiplexer is to



## Techniques for reconfigurable optical add/drop multiplexer

Reconfigurable optical add/drop multiplexer (ROADM) is a next generation critical component that facilitates the network system evolution from a

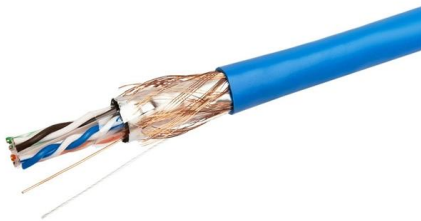
## What is ROADM?

Like its predecessor the OADM, the ROADM allows individual wavelengths to add and drop at a site, with the added benefit of being able to adjust or change the



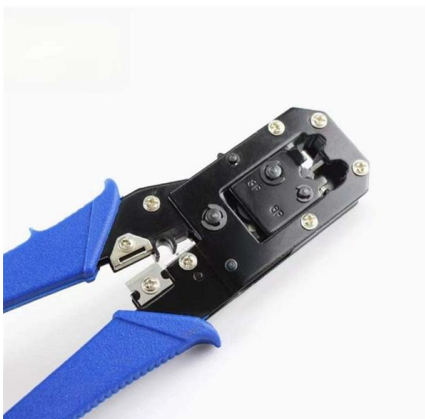
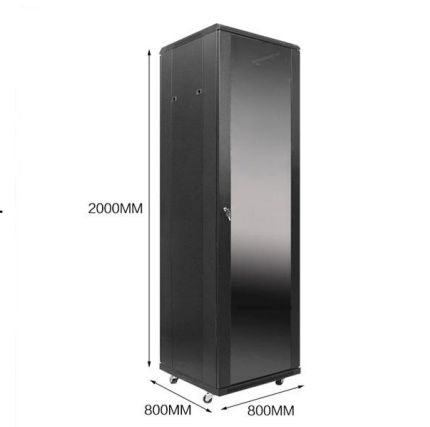
### 40 Gbit/s reconfigurable optical add-drop multiplexer

Higher order optical WDM networks. One of these key filters can improve this . components, an ultra compact reconfigurable optical add-drop multiplexer based



### Design of a reconfigurable optical add/drop multiplexer based on

In this paper, a reconfigurable optical add-drop multiplexer (ROADM) based on the tunable Fabry-Perot (F-P) array is proposed. An optical switch with high isolation and low crosstalk is designed by using



### Design and evaluation of a reconfigurable optical add-drop multiplexer

Reconfigurable optical add-drop multiplexers (ROADMs) for SDM-based networks must have high scalability in terms of port count. However, the ROADM architecture adopted in present



## Reconfigurable optical add-drop multiplexer based on thermally tunable

As one of the key components of WDM optical networks, the reconfigurable optical add-drop multiplexers (ROADMs) can achieve the functionality of multiplexing or de-multiplexing without



## reconfigurable optical add/drop multiplexer

A reconfigurable optical add-drop multiplexer (ROADM) is a key component in wavelength-division multiplexing (WDM) optical communication networks. It allows for flexible and dynamic routing of



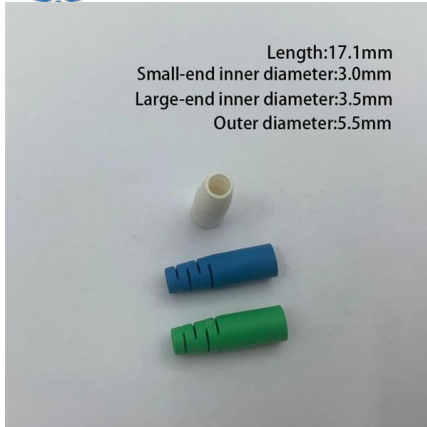
## (PDF) 96-Channel on-chip reconfigurable optical add

A 96-channel silicon-based on-chip reconfigurable optical add-drop multiplexer (ROADM) is proposed and demonstrated for the first time to satisfy



## Implementation of an Elastic Reconfigurable Optical Add/Drop

We designed a Reconfigurable Optical Add/Drop Multiplexer (ROADM) based on a sub carrier add/drop node in an optical communication system that is suitable for all kinds of optical multiplexing signals.



### **Optoplex 3 Port Tunable Filter**

By combining its proprietary optical design and packaging technology with its state-of-the-art optical coating expertise and facility, Optoplex supplies DPSK



### **Contact Us**

---

For datasheets, pricing, or custom telecom energy solutions, please visit:  
<https://www.koskolong.co.za>