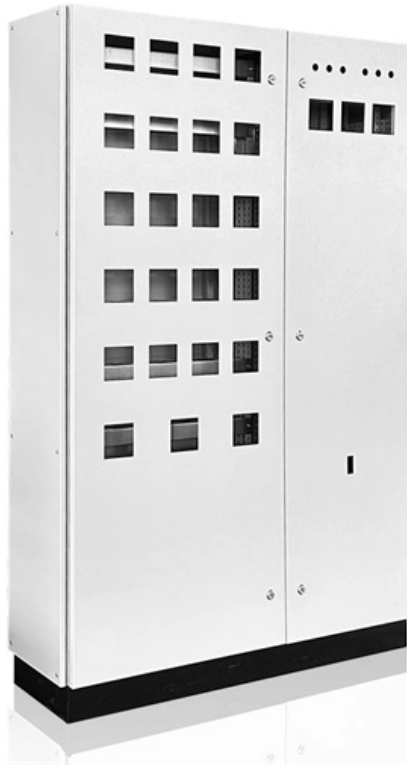




Adam Tas Corridor Energy

High-rise cable tray laying





High-rise cable tray laying



Technical Guidelines for Cable Tray Installation and

Shortest and Straightest Path: To reduce cable loss and simplify maintenance, cable routes should be as short and straight as possible.
Segregation of Power and

Cable Tray in High-Rise Buildings: Vertical Cable

However, vertical cable management solutions are the best cable tray in high-rise buildings. This blog will detail cable management and the benefits of using a



4 Best Practices For Rooftop Cable Trays

Cable trays are a must for any commercial or industrial rooftop. Make sure you are using best practices when installing them.

Cable tray

ABB designs and manufactures cable tray systems, including perforated tray, cable ladder, channel tray and strut (metal framing), directly



from production facilities in

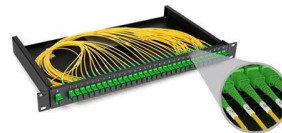


100+ Essential Questions Answered About Cable Trays:

Discover over 100 expert answers about cable trays, covering key topics like material selection, load capacity, installation methods, and maintenance.

Tray Installations

The placement of cables, ducts, and conduits can be done using cable trays - for both outside plant (OSP) and interior spaces (ISP). This allows cables and ducts



Tray Installations

Tray Installations The placement of cables, ducts, and conduits can be done using cable trays - for both outside plant (OSP) and interior spaces (ISP). This allows



Cable Tray Types and Sizes

These cable tray systems serve as efficient alternatives to traditional wireways and electrical conduits, which fully enclose cables. Designed to support and protect all



Data Centre Cable Trays: High-Density Cabling Guide

Learn about Data Centre Cable Trays for high-density cabling. Get a guide on design, materials, smart management, & future tech for data halls.

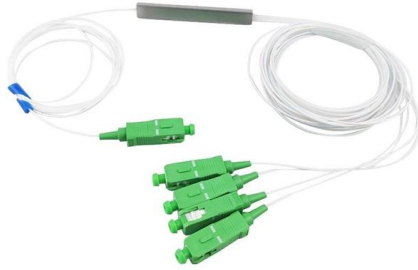
Complete cable tray manual for electrical engineers and

Complete cable tray manual for electrical engineers and designers (on photo: power cable management ladder tray systems assembled aluminum cable tray ladder



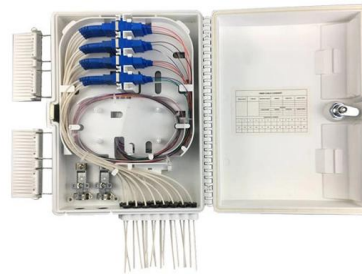
Cable Tray in High-Rise Buildings: Vertical Cable

Hutaib Electricals' wire mesh cable trays are an ideal choice for vertical cable management in high-rise buildings. Constructed with welded wires, these trays



Technical Guidelines for Cable Tray Installation and

Cable tray installation must comply with specific technical standards to ensure electrical safety, system reliability, and long-term maintainability. This document



B-Line series Cable Tray Design Considerations

Our wind certification report provides you with list of acceptable B-Line series cable tray supports, fittings and covers based off of the environmental conditions, cable loading, and type of cable tray in your

Cable Tray in High-Rise Buildings: Vertical Cable

In high-rise buildings, efficient vertical cable management is vital for a reliable and organized electrical infrastructure. Hutaib Electricals, a leading tray manufacturer





Power Distribution Systems for High-Rise Buildings

Top-performing custom modular cable bus power distribution systems by Superior Tray Systems used for high-rise buildings. Made in Canada.

Cable Tray Installation

Cable Tray Installation - Complete Guide June 11, 2025 How about organizing your wiring with a cable tray system? Smart move. Whether you're building a commercial setup or upgrading an industrial



Method Statement installation of Cable Trays and Ladders

This method statement covers the site installation of the cable tray & ladders and the requirements of checks to be carried out.

Overhead Cable Management: Cable Runway vs. Cable

Overhead Cable Management Products from Enconnex Enconnex has partnered with Liberty to deliver best-in-class cable runway and wire mesh



Best practices for underfloor cable management

Modern data center designs must develop cable organization plans with considerations to account for day-to-day operation, operational efficiency of equipment, optimal performance, and the facility's

Cable Tray Spacing Standards for Installation and Safety

The Importance of Cable Tray Spacing in Electrical Infrastructure Cable tray spacing is a critical aspect of electrical infrastructure, influencing both



What is a Vertical Cable Tray?

Advantages: Excellent heat dissipation, high load-bearing capacity, and easy cable access for installation and maintenance. Best For: Heavy power



Essential guide for Cable Tray Installation in Data Centres

Essential guide for Cable Tray Installation in Data Centres. Learn planning, materials, types, installation steps, safety, and maintenance for data halls.

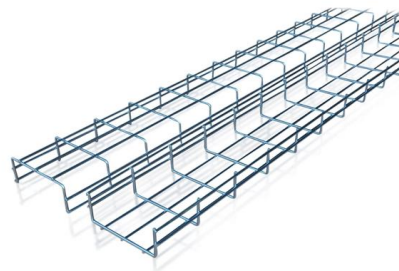


Cable Tray Technical Guide A practical guide to product selection and

Cable Tray Technical Guide A practical guide to product selection and installation This guide for engineers and installers has been developed by ABB as a practical reference regarding cable tray

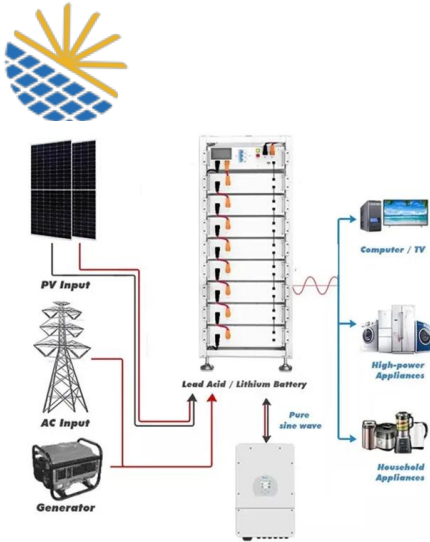
Cable Tray Installation

Learn everything about cable tray installation with our complete guide. Discover types, steps, and safety tips for efficient electrical cable management.



Cable Support Systems

Wibe Group offers a complete range of cable management solutions for all types of installations and environments. Our cable ladders are lightweight and strong, capable of handling high loads and long



Typical Design Philosophy of Cable Trays for Power

Cable tray system shall be used for laying of MV and LV power, control, instrumentation and special cables in the Power Plant. Cable trays shall be



Contact Us

For datasheets, pricing, or custom telecom energy solutions, please visit:
<https://www.koskolong.co.za>