



Adam Tas Corridor Energy

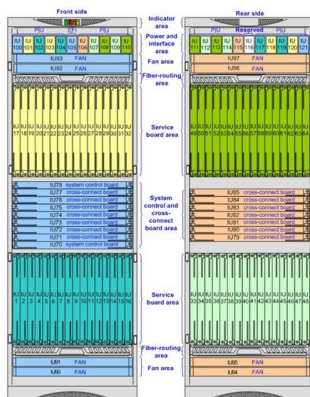
Horizontal Curved Ruler Cable Tray





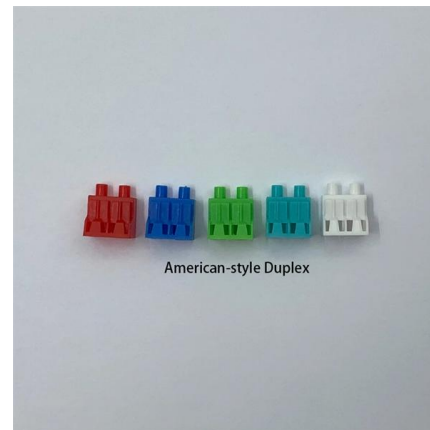
Horizontal Cable Tray , ShowMeCables

The Middle-Atlantic HCT-1 1-Space Horizontal Cable Tray is a handy rackmount cable tray that mounts on any 19 inch rack or cabinet and neatly routes cable



Fiberglass Cable Tray Horizontal Adjustable Bends

Smooth radius fittings are compact and the curved rail shape is an aid for cable pulling. Factory engineering support will help with your special requirements; 30°



Best Practice Guide to Cable Ladder and Cable Tray Systems

This guide covers cable ladder systems, cable tray systems, channel support systems and associated supports intended for the support and accommodation of cables and possibly other electrical





Cable Tray Design and Components Guide

Tables list standard sizes and specifications for straight and bent cable trays, including width, height, thickness, materials, and finishes. Drawings show



Horizontal Cable Support , Racks/Cabinets , ShowMeCables

Horizontal Management for Racks and Cabinets. Options include brush panels, cable trays, D-rings, finger ducts, and more. Available brands include ECore, ICC, Panduit, and Middle Atlantic. 1 to 2

CABLE TRAY SYSTEMS GUIDE

Hubbell's NEXTFRAME® Ladder Tray is the effective and widely used cable runway that supports and delivers bundles of cable between cabinets, racks, and closets, along walls, and suspended from



Legrand® P302460 Itray/90HB Horizontal Cable Tray

These features allow Itray to be installed up to 30% faster than standard tray. Legrand® Cable Tray Elbow, Horizontal, Series: Itray/90HB, 12 in Tray Width, 90



GUIDE CABLE TRAYS TECHNICAL

In accordance with its continuous improvement policy, Legrand reserves the right to change the specifications and illustrations without notice. All illustrations, descriptions and technical information



Curved Wire Mesh Cable Tray

Height is 35-50-75 and 100mm and the width can be up to 50-600mm. Wires used in the tray vary between $\text{Ø}4\text{mm}$, $\text{Ø}4,5\text{mm}$ and $\text{Ø}5\text{mm}$. Wire mesh cable trays are supplied in Standard lengths of

Horizontal Cable Trays , Siltec

The cable trays from SILTEC are made of first-class stainless steel that prevents corrosion and ensures a good level of resistance. This new Siltec product is a



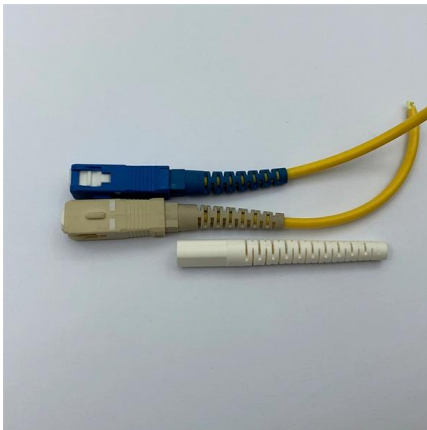
Cable Tray Offset Calculator , Vertical, Horizontal & Compound Offset

While it requires the least horizontal run, it creates a sharp transition that makes pulling stiff cables difficult and may violate the bending radius rules of certain cables. Vertical vs Horizontal vs



Cable Tray

HellermannTytonGÇÖs low voltage raceway (TSR) is a one piece, non-metallic, adhesive backed, latching raceway designed to aesthetically organize and route communications wires, including high



Cable Tray Technical Guide A practical guide to product selection and

A practical guide to product selection and installation This guide for engineers and installers has been developed by ABB as a practical reference regarding cable tray characteristics, installation, and

Cable Tray SHIB NAL

Cable trays are not raceways, but they are treated as a structural component of a facility's electrical system. Cable trays are a part of a planned cable management system to support, route, protect and



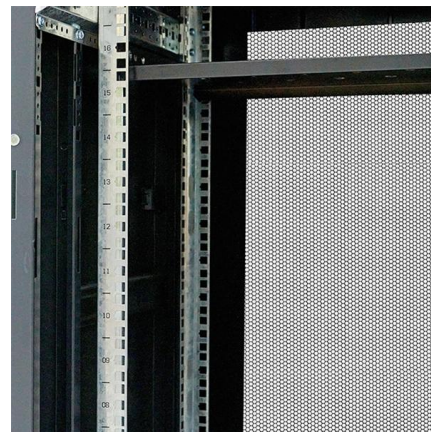


Cable Tray Horizontal Supplier , Leading Manufacturer

Looking for a reliable supplier of horizontal cable trays? Look no further! We are the leading manufacturers and suppliers of cable tray horizontal products. Contact us today!

Shop Pre Galvanized Steel Cable Ladder Tray Curved

Product description Ladder cable tray horizontal elbow 90 degree, with an outside flange (OF), manufactured from pre galvanized steel (GI). Produced by BAHRA



Typical Design Philosophy of Cable Trays for Power

Cable trays shall be complete with necessary hot dip galvanized sheet steel accessories such as coupler plates, ground continuity connections, clamps, nuts,

GUIDE CABLE TRAYS TECHNICAL

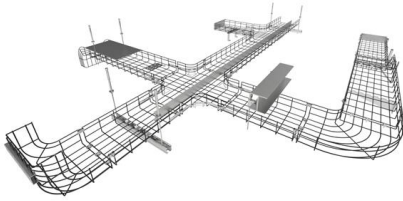
NEMA VE 1-2017 Specifies requirements for metal cable trays and associated fittings designed for use in accordance with the rules of Canadian Electrical Code, Part I and the National Electrical Code®





Cable Tray

Tailored Cable Solutions Our range of components lets you configure a cable tray to route cables through unused space, while keeping them accessible for easy maintenance. Whatever your



Cable Pathway , nVent HOFFMAN

Complete line of safe and reliable overhead cable management and pathway solutions. Routes cables via a modular pathway through unused space on the floor, wall or ceiling while keeping cables



CATALOG Cable Tray Cable tray systems

Unlike the conduit system, the cable tray system allows the installer to pull tray cables from one termination enclosure to the next before insertion and termination.



Method Statement installation of Cable Trays and Ladders

This method statement covers the site installation of the cable tray & ladders and the requirements of checks to be carried out.



30° Horizontal Elbow , Cable Tray Systems , PUPCO

Discover our 30° Horizontal Elbow for cable tray systems. Seamlessly transition between sections and fittings, reducing tray width. Contact us today!



Contact Us

For datasheets, pricing, or custom telecom energy solutions, please visit:
<https://www.koskolong.co.za>