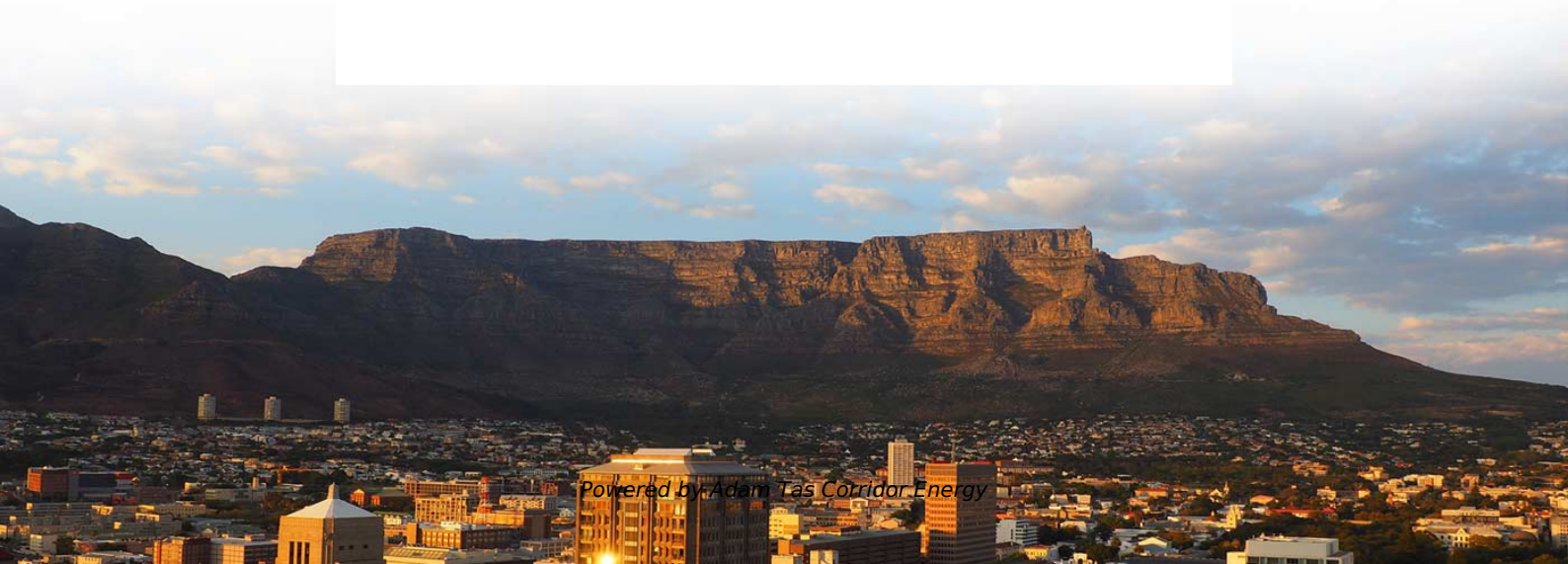




Adam Tas Corridor Energy

How can single-mode and multimode optical cables be tested





Overview

If you're working with single-mode and multimode fibres, testing them with an Optical Time Domain Reflectometer (OTDR) is essential for ensuring your network is up to standard. Testing both types is possible, though there are some significant differences and considerations to. These differences determine which transceivers work with which fiber and how far signals can travel.



How can single-mode and multimode optical cables be tested

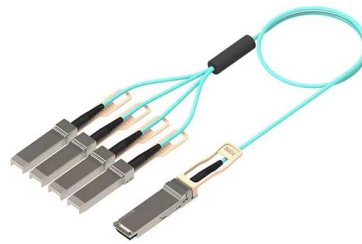


Multimode vs Single Mode Fiber Patch Cords: Which

What Are Multimode and Single Mode Patch Cords? The abbreviation LB and single mode patch cords is fiber patch cords (also known as fiber

Cables and Accessories

SEL manufactures high-quality fiber optic, ethernet, coaxial, and other cables and accessories. Sized to order and quality tested for reliability and operation.



What Is Fiber Optics? Definition from SearchNetworking

Types of fiber optic cables Multimode fiber and single-mode fiber are the two primary types of fiber optic cable. Single-mode fiber Single-mode fiber is

Single-mode optical fiber

In fiber-optic communication, a single-mode optical fiber, also known as fundamental- or mono-mode, is an optical fiber designed to carry



only a single mode of light



- 50KW/100KWH
- HIGHER POWER OUTPUT IN OFF-GRID MODE
- CONVENIENT OPERATION & MAINTENANCE
- PRE-WIRED

Single-Mode vs Multi-Mode Compatibility -- Guide, Best

Learn how single-mode and multi-mode transceivers differ, compatibility rules, testing tips, and best practices for reliable fiber deployments.

How to Tell the Difference Between Single Mode and Multimode Fiber?

Knowing how to tell the difference between single mode and multimode fiber is crucial for network efficiency; the core distinction lies in the fiber's core diameter and how light travels through



Can I use single mode equipment over multimode cable and vice

What Drives Multimode to Single-mode Conversion Demand or vice versa? So what's the cause of mix-using multimode and single-mode fiber? As we see, the optics applied in point-to-point



Guidelines Corning Recommended Fiber Optic Test

1 Testing Tier 2 testing involves the use of an optical time domain reflectometer (OTDR) to provide a trace (visual picture) of the installed fiber optic network . Figure 2). The wavelength(s) used for



Fiber Optic Cable Pricing Guide: Factors That Affect

Fiber optic cables are essential components in today's broadband, FTTx, and data center networks. Whether you're planning a national fiber rollout

Single Mode vs Multimode Fiber: A Complete

Understand the difference between fibers: single mode offers long-distance, high bandwidth, while multimode suits short runs and lower costs.



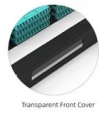
Cost of Fiber Optic Cable: Pricing Guide (2026)

Key Takeaways Fiber-optic cable materials typically cost \$1 to \$6 per linear foot, depending on fiber count and cable type. Commercial building



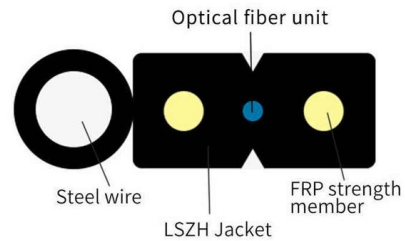
Pre-Terminated Patch Panel

- Standard 19" width
- Max 144 fibers in 1U
- MPO/Fusion Dual-Purpose



Fiber Optic Cable Types Explained

Our comprehensive guide to types of fiber optic cables. Learn all about the differences between single mode and multimode cables, as well as the various



Single Mode vs. Multimode Fiber: Key Differences and

Discover the key differences between single mode and multimode fiber optic cables, including core size, bandwidth, distance, and cost. Learn how to

Testing Single-Mode & Multimode Fibres with an OTDR , CMW

Learn how to effectively test both single-mode and multimode fibres with an Optical Time Domain Reflectometer (OTDR). Explore tips, techniques, and the best launch and receive cables for





Fiber Optic Cable Testing Methods ,Fluke Networks



Effective fiber testing utilizes advanced tools such as Optical Loss Test Sets (OLTS), Optical Time-Domain Reflectometers (OTDR), and Visual Fault Locators (VFL) to diagnose and correct issues,

FOA Fiber U Quickstart Guide: Fiber Optic Testing

This is your "QuickStart" guide to testing fiber optic cable plants, patchcords and communications equipment with a fiber optic light source and power meter. We'll



Reference Guide to Fiber Optic Testing

optical testers is optical handhelds. This family is comprised of handheld devices that allow for the measurement of system power level, insertion loss (IL), optical return loss (ORL), reflectometry,

The FOA Reference For Fiber Optics

After fiber optic cables are installed, spliced and terminated, they must be tested. For every fiber optic cable plant, you need to test for continuity and polarity, end-to



Fiber Optic Cable Types , Omnitron Systems Guide

Fiber optic technology has transformed the way we transmit data, enabling faster, more reliable connections than traditional copper cables. Understanding fiber optic cable types is essential for

The FOA Reference For Fiber Optics

Fiber Optic Testing Testing is used to evaluate the performance of fiber optic components, cable plants and systems. As the components like fiber, connectors,



The FOA Reference For Fiber Optics

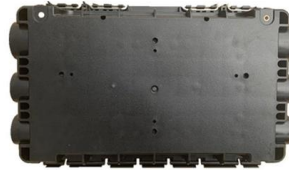
Graded index multimode fiber is primarily used for premises networks, LANs, fiber to the desk, CCTV and other security systems. Graded index (GI) fiber is made with





Multi-mode optical fiber

Multi-mode optical fiber is a type of optical fiber mostly used for communication over short distances, such as within a building or on a campus. Multi-mode links can

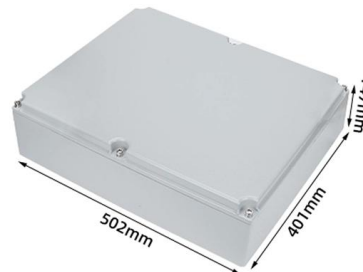


6 Core Fiber Optic Cable Price and Specification Guide

Compare 6 core fiber optic cable price by single mode or multimode fiber, jacket, armor, tensile strength, packing length, and testing.

OM1 vs OM2 vs OM3 vs OM4 vs OM5 Multimode Fiber

Compare OM1, OM2, OM3, OM4, and OM5 multimode fiber specs, distances, bandwidth, and applications. Essential guide for data center fiber



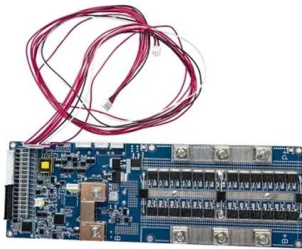
How to Check If My SFP Is Single Mode or Multimode

At that point, figuring out whether it is single-mode or multimode becomes tricky. If the type is misjudged, it can easily lead to problems such as: Unstable links Not knowing which fiber



Permanent Link Testing of Multimode and Singlemode Fiber Optic

This document describes how and where permanent link loss testing should be performed based on the specifics of the cabling system. A link loss equation is used to calculate acceptable attenuation



Single-Mode vs Multimode Fiber Testing: Key Differences

Learn how to test single-mode and multimode fiber with different equipment, procedures, and standards. Avoid common challenges and follow best practices.

Is SC single-mode or multimode?

SC refers to a type of fiber optic connector and can be used for both single-mode and multimode fiber optic cables. The SC connector itself does not specify whether it is single-mode or multimode, as it is



Single Mode vs. Multimode Fiber Optic Cables

There are two main types of fiber optic cables: single mode and multimode. Although they can do the same job in some instances, the different



Contact Us

For datasheets, pricing, or custom telecom energy solutions, please visit:
<https://www.koskolong.co.za>