



Adam Tas Corridor Energy

How far apart should power and data cable trays be spaced





Overview

power cable requires 12 inches of separation unless a listed barrier or separate raceway is used. The National Electrical Code establishes specific minimum distances when communications cables must run near power and light circuits. Proper installation can significantly reduce electromagnetic interference, prevent fire hazards, and improve overall efficiency. The NEC requires that cable trays must be supported by members at an interval specified by the cable tray manufacturer, but not more than 5 feet for horizontal runs to support the weight of the cables and other loads. Maintaining proper separation between power, data, and limited energy cabling is foundational to system performance, safety, and code compliance.



How far apart should power and data cable trays be spaced



Cable Tray Technical Guide A practical guide to product selection and

Where power and data cables are installed within the same containment system or within close proximity to each other, a barrier strip or other appropriate divider should be used.

Cable Tray Spacing Standards for Installation and Safety

To minimize electromagnetic interference (EMI), the horizontal spacing between power and signal cable trays should generally not be less than 0.5 meters (approximately 20 inches).



How Far Apart Should Data and Power Cables Be?

Learn the recommended distance between data and power cables to avoid interference and maintain optimal performance. Expert tips from Performance



Telecommunications Horizontal Cabling and Support Structure

The maximum horizontal distance shall be 76-meters (250 ft). For ease of cable installation



and future expansion in hallway or major distribution routes, cable trays are the preferred method for distributing



Cable Tray Technical Guide A practical guide to product selection and

SOLID-BOTTOM CABLE TRAY Providing additional cable protection, solid-bottom cable tray is sometimes preferred to support and protect numerous small instrumentation and control cables.

Cable Tray Size Calculation for Project Engineers

Cable tray size calculation ensures safe, efficient cable management for power, control, and data installations with future scalability



Cable Tray Design, Layout, and Overall Wiring Planning

Learn about effective Cable Tray Design and Layout for electrical systems. Our guide covers planning, material choice, safety,



Cable Tray Installation

Learn everything about cable tray installation with our complete guide. Discover types, steps, and safety tips for efficient electrical cable management.

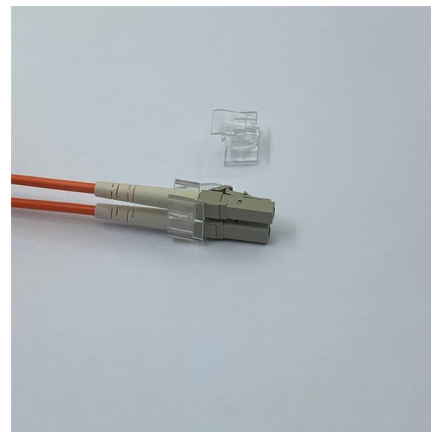


5 Golden Rules for Safe & Compliant Cable Tray Installation

Ensure safety and compliance in your cable tray installation. Discover the 5 golden rules covering NEC standards, load capacity, grounding, and support spacing.

Cable Tray SHIB NAL

Cable trays are not raceways, but they are treated as a structural component of a facility's electrical system. Cable trays are a part of a planned cable management system to support, route, protect and



Core Principles for Electrical and Instrumentation Cable

Spacing Standards: Electrical (power) and instrumentation (signal/control) cable trays should maintain a minimum vertical and horizontal distance. Industry



How much separation is required between communications cables

Cause: Data cables and power cords are sometimes installed in close proximity or may overlap. Resolution: The ANSI/TIA-569-C standard speaks directly to the separation of



Cable Pathways: A Data Center Design Guide and Best

Cable Pathways: A Data Center Design Guide and Best Practices Cables may not be the most glamorous part of the data center, but they certainly

A Guide to Installing and Supporting Electrical Cable Trays

A professional guide to installing electrical cable tray systems per NEC Article 392. Covers support, securing cables, and fill calculations.





Optimal Data & Power Cable Separation: Guide to Safe

Rules stipulate that electrical wiring and non-electrical cables should be separated by at least 2 inches to avoid interference. However, if your Cat6 cable is running

Best Practices for Installing Cables in Trays

Quick Installation Checklist (Key Steps) Cable tray cable installation generally follows these steps: Inspect cables before installation Prepare and



5 Golden Rules for Safe & Compliant Cable Tray Installation

Generally, no. Power cables can generate electromagnetic interference (EMI) that disrupts data signals. If they must share a path, they should be physically separated by a grounded



Requirements for working clearances and spaces around electrical

Home Letters of Interpretation Requirements for working clearances and spaces around electrical equipment, e.g., ladder cable trays.



Cable Separation Standards , Winnie Industries

Maintaining proper separation between power, data, and limited energy cabling is foundational to system performance, safety, and code



Cable Tray Support Spacing: Key Guidelines Explained

The NEC requires that cable trays must be supported by members at an interval specified by the cable tray manufacturer, but not more than 5 feet for horizontal runs to support the weight of



Typical Design Philosophy of Cable Trays for Power

Redundant circuits (standby drives) shall be spaced as far apart as possible and shall be laid in physically segregated cable trays in separate route to the extent





Best Practice Guide to Cable Ladder and Cable Tray Systems

This guide covers cable ladder systems, cable tray systems, channel support systems and associated supports intended for the support and accommodation of cables and possibly other electrical

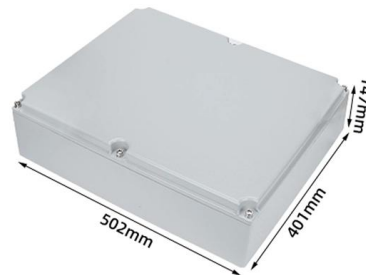


NEC Minimum Separation Distances Between Power and Data Cables

While the NEC minimum separation is primarily focused on safety, best engineering practice often recommends exceeding the two-inch minimum, particularly when dealing with power circuits of

Cable Separation Standards , Winnie Industries

Best Practice: Unshielded data cable vs. power cable requires 12 inches of separation unless a listed barrier or separate raceway is used.
Shielded



Contact Us

For datasheets, pricing, or custom telecom energy solutions, please visit:
<https://www.koskolong.co.za>