



Adam Tas Corridor Energy

How far does fiber optic cable attenuation increase





How far does fiber optic cable attenuation increase

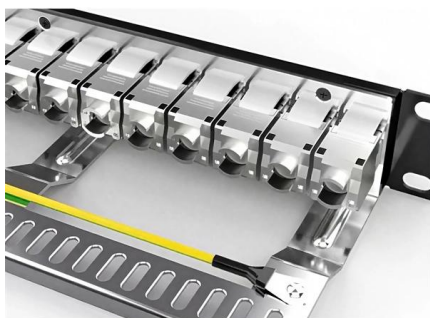
Attenuation in Fibers

This is a continuation from the previous tutorial - graded-index fibers. Several factors contribute to attenuation of the power of an optical wave propagating in an optical



Fiber Attenuation

With decreasing wavelength, the attenuation increases to approximately 20 dB/km for $\lambda = 460$ nm and to approximately 40 dB/km for $\lambda = 400$ nm. When using



What is Attenuation in Optical Fiber and Its Causes

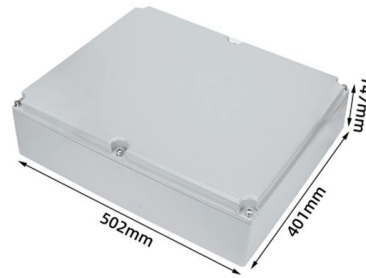
In some cables like conventional or FOCs (fiber optic cables), this can be identified in terms DBs (decibels) for each foot, kilometer, or thousand foot, etc. The cable

Optical Signal Attenuation and Dispersion , Springer Nature Link

The dispersion mechanisms in a fiber cause optical signal pulses to broaden as they travel



along a fiber. If these pulses travel sufficiently far, they will eventually overlap with neighboring

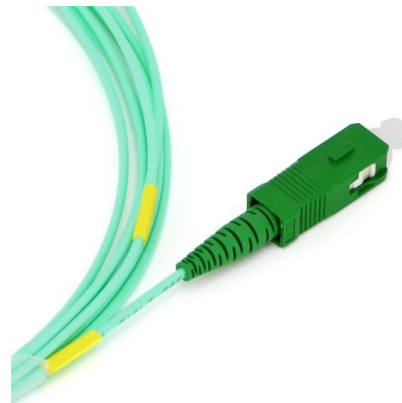


Reduce Signal Attenuation in Fiber Optics , Best Practices

Discover how to reduce signal loss in fiber optic cabling with quality cables, proper installation, and advanced technologies for reliable FTTH and

Fiber-Optic Cable Signal Loss, Attenuation, and Dispersion , Juniper

Attenuation and Dispersion in Fiber-Optic Cable
Correct functioning of an optical data link depends on modulated light reaching the receiver with enough power to be demodulated correctly. Attenuation is



Fiber Attenuation

As mentioned above, fiber dispersions limit the performance of optical communication systems by broadening optical pulses as they travel along a fiber. Fiber attenuation represents another limiting



Tutorial Passive Fiber Optics, Part 7: Propagation

Part 7: Propagation Losses in Optical Fibers
When light propagates as a guided wave in a fiber core, it experiences some power losses. These are particularly



Attenuation In Optical Fibers And Calculation

As the distance light travels through an optical fiber increases, the light's strength decreases; this phenomenon is known as "fiber attenuation." It is

Understanding Fiber Optic Signal Loss & Attenuation

Learn about fiber optic signal loss, its causes, measurement techniques, and strategies to reduce attenuation for high-speed, reliable network performance.



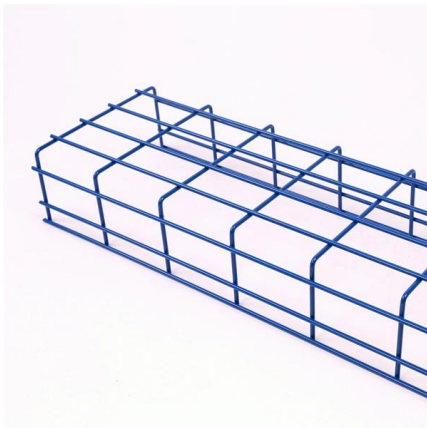
Basic Principles of Fiber Optics Series: Attenuation

Attenuation increases slightly with increasing temperature but decreases with increasing humidity when dry at the center of the cable. When



What Is Attenuation in Fiber Optics and How Is It Measured?

Attenuation in fiber optics is the gradual loss of light signal strength as it travels through a fiber cable. It's measured in decibels per kilometer (dB/km), and it determines how far a signal can



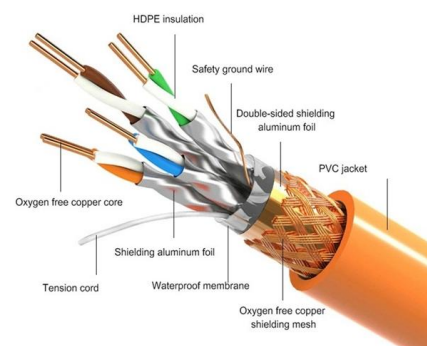
Attenuation in Optical Fiber

Attenuation in Different Environmental Conditions Environmental factors like temperature, humidity, and physical stress can significantly affect attenuation in optical fibers. For example, extreme

Ultimate Guide to Fiber-Optic Patch Cables: Types, Selection, and

From data centers to residential fiber installations, the correct fiber optic patch cables yield improved speed, increased bandwidth, and solid, consistent signals. Every step in this guide is

PRODUCT DETAILS





Understanding Signal Attenuation in Fiber Optics and

Attenuation in optical transceivers weakens signals. Manage loss by checking cables, cleaning connectors, and using proper fiber tools.

Calculating Fiber Optic Loss Budgets

The cable plant loss budget needs to consider transceiver wavelength, fiber type, and link length plus the losses incurred in splices, connections and other passive



Does cold weather affect fiber optic cable

Fiber optic cables come in various types, primarily categorized into single mode fiber and multimode fiber. Single mode fiber, with its smaller core size, is designed for long-distance

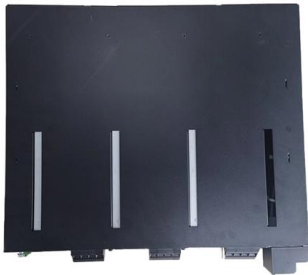
Basic Principles of Fiber Optics Series: Attenuation

Discover the causes and effects of attenuation in fiber optic cables. Learn about scattering, absorption, bending losses, and how to limit signal



Understanding Fiber-Optic Cable Signal Loss, Attenuation, and

Passive media components such as cables, cable splices, and connectors cause attenuation. Although attenuation is significantly lower for optical fiber than for other media, it still



Fiber Optic Cable Filling Compound: Core Functions and Technical

In the structure of fiber optic cables, the filling compound is a layer that is easily overlooked yet critically important. It does not directly participate in optical signal transmission, nor is it as visibly apparent as



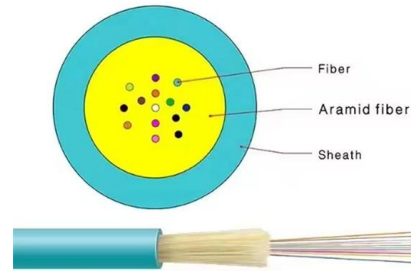
Fiber Attenuation

Fiber attenuation represents another limiting factor; it limits how far a signal can propagate in the fiber before the optical power becomes too weak to be detected.



Iran war summary, day 74 , Trump regime in China! Trump wants

Hezbollah's use of fiber-optic FPV drones marks shift in the confrontation with the Israeli entity -This tech relies on guiding the drone via a high-precision fiber optic cable instead of traditional



Optical power loss (attenuation) in fiber access

Light traveling in an optical fiber loses power over distance. The loss of power depends on the wavelength of the light and on the propagating material. For silica

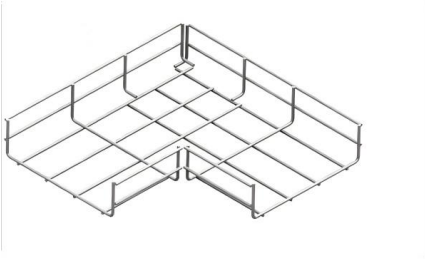
Signal Attenuation in Fiber Optics: Causes, Measurement, and

Learn what signal attenuation in fiber optics is, what causes it, how it's measured, and the best ways to reduce loss for optimal network performance.



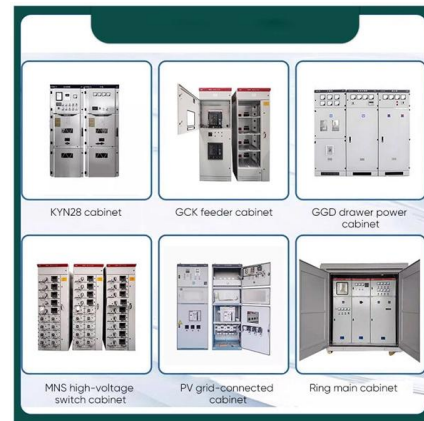
Understanding Fiber-Optic Cable Signal Loss, Attenuation, and

To determine the power budget and power margin needed for fiber-optic connections, you need to understand how signal loss, attenuation, and dispersion affect transmission. The uses



Single Mode vs. Multimode Fiber Optic Cables

There are two main types of fiber optic cables: single mode and multimode. Although they can do the same job in some instances, the different



Fiber Optic Cable Range: Comprehensive Guide

Attenuation is the progressive loss of signal strength that occurs as light travels through the fiber. The greater the distance, the greater the

Contact Us

For datasheets, pricing, or custom telecom energy solutions, please visit:
<https://www.koskolong.co.za>