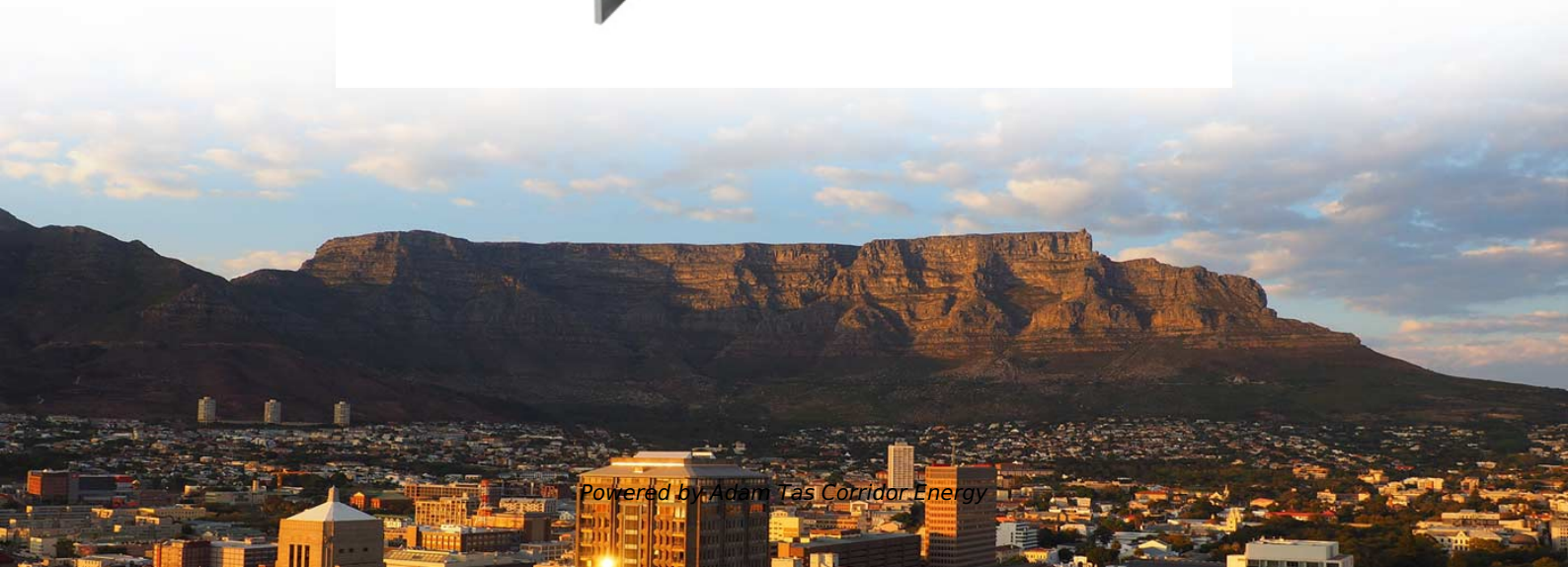




**Adam Tas Corridor Energy**

# **How high should the residential electrical distribution box be placed**





## Overview

---

The proper installation of a distribution box involves placing it at the right height to ensure safety and convenience. Ensure safe placement: install in dry, accessible areas with good ventilation and at appropriate height (typically ~1. The National Electrical Code (NEC) specifies that the center of the grip of the operating handle of the highest circuit breaker must not be located more than 6 feet 7 inches (2. One distribution board or consumer unit is enough for one residential premises including the meter.



## How high should the residential electrical distribution box be placed

---



### Outlet height from floor: A quick guide for safety and accessibility

Final thoughts: Outlet height from floor Have you been wondering "How high should an outlet be from the floor?" For starters, proper outlet placement is crucial for ensuring that your home's electrical

### How High Off the Ground Should an Electrical Outlet Be?

When designing or remodeling a home, one aspect that's often overlooked is the height of electrical outlets. While it may seem like a minor



### Where is the best place to put a power distribution box?

Our power distribution boxes are crucial components of electrical systems, as they help distribute electricity safely and effectively. However, when it comes to choosing the best location for a power



### Electrical Panel Mounting Requirements (Dictated by the

Looking to transfer your electrical panel to a new place? Perhaps you want to put it somewhere



inconspicuous - in a closet or in the bathroom.

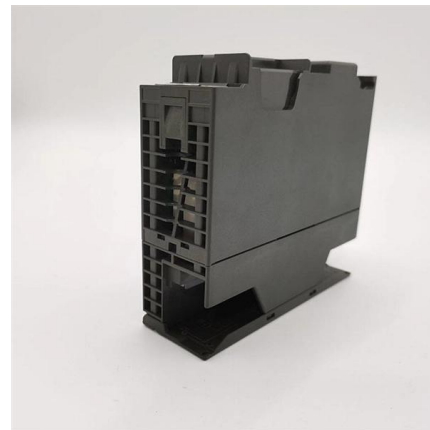


## The Complete Guide to Distribution Box: Installation, Types & More

What's the difference between a distribution box and a sub-panel? A distribution box typically refers to the main electrical panel that receives power from the utility service. A sub-panel is

## IEC / BS 7671 Codes for Consumer Unit and Distribution

Residential: The recommended height for distribution board and consumer unit is between 1 metre to 1.8 metre from the floor. The suggested height is 1.3 metres



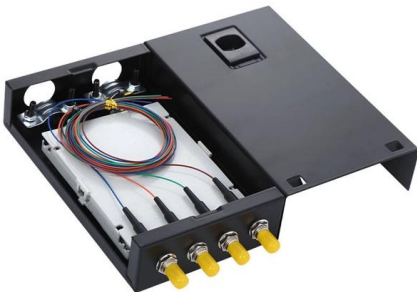
## How to Choose a House Distribution Box , CHINT global

An optimal distribution box configuration ensures efficient power management and safety. The recommended configuration is: 1 Main Switch:



## What is the Ideal Installation Height for a Distribution Box

The proper installation of a distribution box involves placing it at the right height to ensure safety and convenience. Mounting it 4.5 to 5.5 feet (1.4 to 1.7 meters) high



### Pre-Terminated Patch Panel

Standard 19" width    Max 144 fibers in 1U    Ultra-High Density Ready



Dual-rail, easy install & maintain



Lightweight ABS MPO cassette



Premium sheet metal with matte coating

## How to Choose a House Distribution Box , CHINT global

This article guides you through selecting a distribution box that is both affordable and safe, emphasizing key features, configuration, and practical

## Electric Code Circuit Breaker Panel Box Requirements

The National Electric Code (NEC) includes the minimum standards for installing a circuit breaker panel box. These standards set the minimum safety



## The installation requirements for the distribution box

For the vertical clearance, often called headroom, the space must be clear from the floor up to a minimum height of 6 feet 7 inches (2.0 meters) or the height of the equipment, whichever is



### The height requirement of distribution box

The distribution box shall be installed horizontally and vertically. After the box is placed, the perpendicularity of the box shall be found with ruler board to meet the requirements.



### Where is the best place to put a Electrical distribution box?

In addition, the location should be close to the main electrical power source so that the box can easily be connected to it. When choosing the best place to put a Electrical distribution

### Requirements And Specifications For Installation Of

In flammable and explosive environments, explosion-proof distribution boxes should be selected and explosion-proof treatment should be carried out.





## Distribution Box Installation: A Complete Guide to Safe

Proper installation of a distribution box ensures electrical safety, efficiency, and reliability. In this comprehensive guide, we'll cover everything you need to know



### Where Is the Distribution Box Located and How to Find It

When your power goes out or a circuit breaker trips, knowing exactly where your distribution box is located can save you time, money, and frustration.



### How to Install a Distribution Box--A Comprehensive

Operating environment: Electrical distribution boxes can be divided into residential, commercial, and industrial. Residential distribution boxes usually



### Requirements And Specifications For Installation Of

The bottom edge of the distribution box is usually between 1.5 meters and 1.8 meters above the ground, which is convenient for operation and



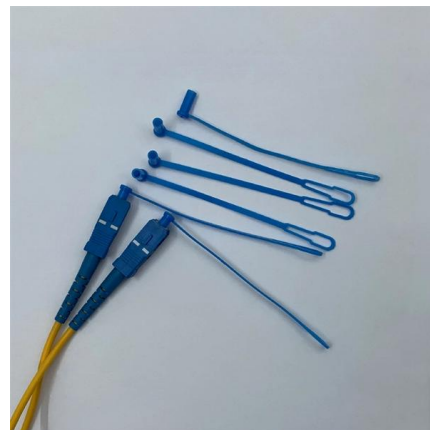
### Standard Outlet Height: What Is Ideal? Updated Guide

Standard Height of Switches and Outlets You should know how high should electrical outlets be. The standard height for switches and outlets is



### How to Install a Distribution Box--A Comprehensive

The best height for installing residential distribution boxes is 1.5 meters above the ground, while for industrial distribution boxes, the height



### The Complete Guide to Distribution Box: Installation, Types & More

Blog The Complete Guide to Distribution Box: Installation, Types & More By Admin Aug 2, 2025 No Comments # distribution box Introduction Electrical systems power our homes, offices, and





## How High Should You Mount an Electrical Panel?

An electrical panel, often called a breaker box, serves as the central distribution point for electricity within a structure, housing the circuit breakers that protect the wiring from overcurrent

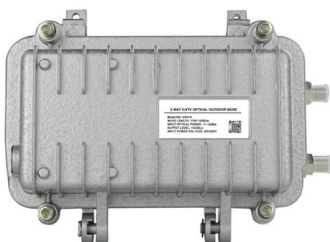


## Are There Restrictions On Where To Mount A

The rules and restrictions on the placement of circuit breaker boxes are meant to make the installation safe, and that includes common-sense

## The Ideal Light Switch Height for Any Room, Solved!

While there's no right or wrong light switch height for most homes, you should install yours 48 inches from the floor. Here's why--and when to adjust.



## Electrical Panel Locations

Learn more about Electrical Panel Locations- A Guide for Placement - MEP Engineering - Master Electrician Services EVstudio .



## Contact Us

---

For datasheets, pricing, or custom telecom energy solutions, please visit:  
<https://www.koskolong.co.za>