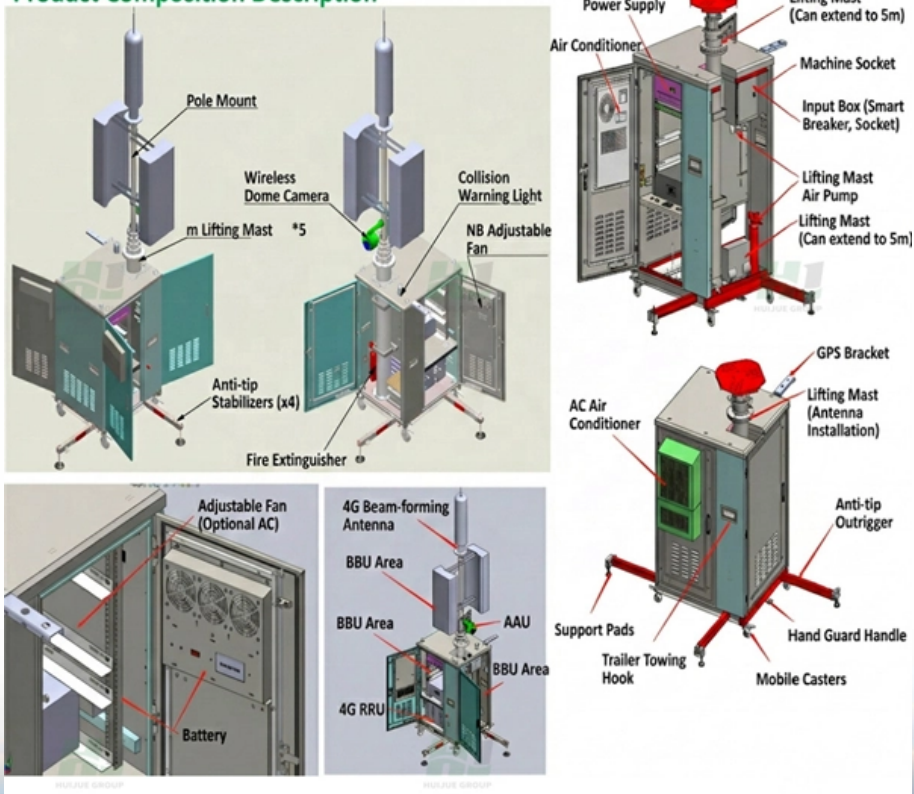




How long does it take to fully charge the lithium iron phosphate battery in the energy storage cabinet

Product Composition Description



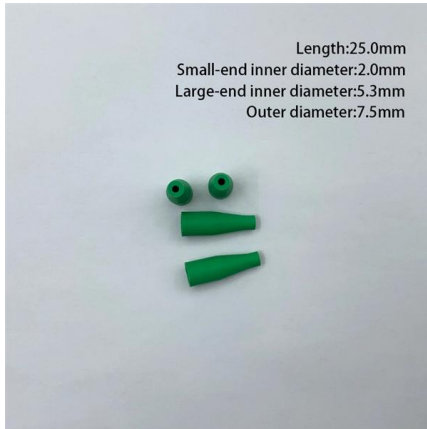


Overview

However, as a general estimate, LiFePO₄ batteries typically take about 2 to 6 hours to fully charge. It's worth noting that charging time may be affected by charger specifications and capabilities. SLA batteries take six hours, while lithium batteries take as little as 15 minutes.



How long does it take to fully charge the lithium iron phosphate bat



How Long Do LiFePO4 Batteries Last? Lifespan,

How Long Do LiFePO4 Batteries Last and How to Extend Their Lifespan LiFePO4 batteries, or Lithium Iron Phosphate batteries, are widely

Lithium-ion batteries and the future of sustainable energy: A

Abstract Lithium-ion batteries (LIBs) have become a cornerstone technology in the transition towards a sustainable energy future, driven by their critical roles in electric vehicles,



How to Charge Lithium Iron Phosphate LiFePO4

Energy-X Lithium Iron Phosphate batteries typically measure around 14.4V when fully charged, dropping to about 13.4V once the charger is removed.

How To Charge Lithium Iron Phosphate (LiFePO4)

Long Term Storage When storing batteries long-term, storage requirements differ for SLA and



lithium batteries. First, the battery chemistry dictates the optimal state of



How to Charge a LiFePO4 Battery

Learn how to charge a LiFePO4 battery for optimal performance and longer life. Avoid mistakes and use the right charger for safe, reliable power.

How Long to Charge a Lithium Battery for the First Time: Expert Guide

Lithium batteries have revolutionized the way we power our devices, with high energy density, long life, and lightweight design. However, the first charge of a lithium battery is critical to its



How Long Does It Actually Take to Fully Charge Lithium Batteries?

Charging time for lithium batteries is affected by several key factors that determine how quickly the battery can safely and effectively reach full charge. Understanding these variables helps in



Charging a Lithium Iron Phosphate (LiFePO4) Battery

Lithium Iron Phosphate (LiFePO4) batteries are increasingly popular due to their safety, longevity, and performance characteristics, particularly in



Discover Europe's digital cultural heritage , Europeana

Hier sollte eine Beschreibung angezeigt werden, diese Seite lässt dies jedoch nicht zu.

How to Charge Lithium Iron Phosphate Batteries , Power

Find out how to safely charge LiFePO4 batteries for maximum performance and lifespan. Take control of your energy use with reliable storage solutions.



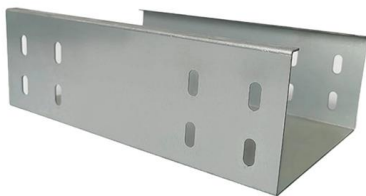
How to charge lithium iron phosphate LiFePO4 battery?

When switching from a lead-acid battery to a lithium iron phosphate battery. Properly charge lithium battery is critical and directly impacts the performance and life of



how to charge lithium iron phosphate battery

If you notice any abnormalities, stop the charging process immediately. conclusion Understanding how to charge lithium iron phosphate batteries is essential to unlocking their full potential. With their



How Long Does It Actually Take to Fully Charge Lithium Batteries?

Discover how long lithium batteries take to charge with our detailed guide. Learn about charging times, factors that affect speed, and tips to optimize battery life. Get the most efficient charging practices for

How to Charge Lithium Iron Phosphate (LFP) Batteries

This article provides a comprehensive guide to charging LFP batteries, including recommended voltage ranges, charging strategies,





How to Charge a LiFePO4 Battery

If you're using a LiFePO4 (lithium iron phosphate) battery, you've likely noticed that it's lighter, charges faster, and lasts longer compared to lead

How to Charge a Lithium Iron Phosphate (LiFePO4)

Lithium iron phosphate (LiFePO4) batteries are a popular choice for campers due to their long lifespan, lightweight design, and high efficiency.



Correct Charging Methods for Lithium Iron Phosphate

Learn how to correctly charge lithium iron phosphate and other battery types for optimal performance and lifespan.

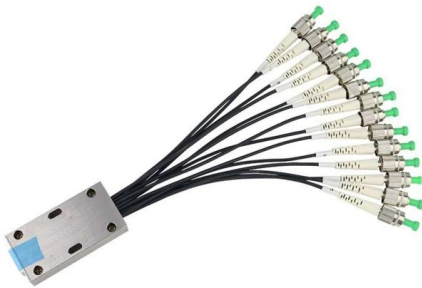
How to Charge Lithium iron Phosphate (LiFePO4) Battery?

Monitor the charge, stop when it's fully charged, and keep the battery cool. Simple, right? But stay tuned, I'll give you a detailed step-by-step guide on



How to Take Care of Your Lithium Iron Battery for Long Life

Discover the best practices to maintain your lithium iron battery, extend its lifespan, and ensure safe, reliable performance for all applications.



How Long Does It Take to Charge a Lithium Iron

This theoretical calculation suggests it would take approximately 200 hours to fully charge the battery at a 0.5C charge rate. However, real-world



How to charge Lithium Iron Phosphate (LiFePO4)

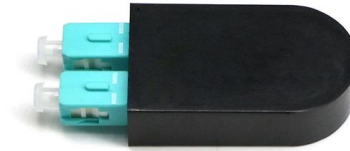
The recommended charging method for LiFePO4 batteries is a two-stage process: charge at a constant current (0.2C-0.5C) until reaching 90-95%





Lithium iron phosphate

Lithium iron phosphate batteries are important for many applications, including power tools, battery energy storage systems, uninterruptible power systems (UPS),



What are the basic correct charging methods for lithium iron

Once the battery is fully charged, the charger will typically stop automatically. Disconnect the charger from the battery to prevent overcharging. Overcharging and over-discharging can

Charging a Lithium Iron Phosphate (LiFePO4) Battery Guide

Discover the benefits of LiFePO4 batteries and follow a step-by-step guide to efficiently charge your Lithium Iron Phosphate battery.



How To Charge Lithium Iron Phosphate (LiFePO4)

How To Charge Lithium Iron Phosphate (LiFePO4) Batteries Charging a lithium battery can be confusing and overwhelming, this blog has everything



[Full Guide] How to Charge LiFePO4 Batteries

Lithium Iron Phosphate (LiFePO4) batteries are becoming increasingly popular for their superior performance and longer lifespan compared to traditional lead-acid



How to Charge Lithium Iron Phosphate Batteries , Power

SLA batteries take about four hours, while lithium batteries can reach full charge in as little as one hour--up to four times faster--even at just 0.5C. Stage 2

[passman/js/vendor/zxcvbn/zxcvbn.js.map](#) at master · nextcloud

? Open source password manager with Nextcloud integration - nextcloud/passman





How long does it take to charge a lithium iron phosphate

Charging time for LiFePO₄ lithium batteries will vary based on several factors, including battery capacity, charging current, and the initial state of charge



Contact Us

For datasheets, pricing, or custom telecom energy solutions, please visit:
<https://www.koskolong.co.za>