



**Adam Tas Corridor Energy**

# **How many gigabytes of optical module does an OLT typically use**





## Overview

---

An optical line termination (OLT), also called an optical line terminal, is a device which serves as the service provider endpoint of a.



## How many gigabytes of optical module does an OLT typically use

---

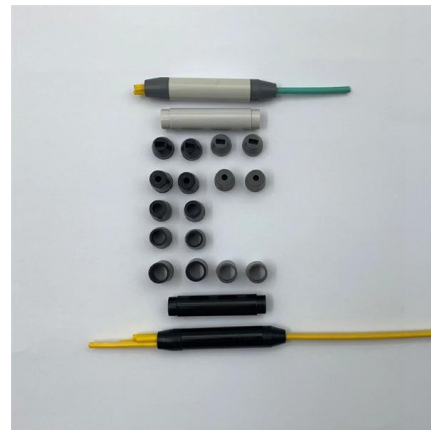


### ZTE OLT FAQ: Expert Answers to Technical & Deployment Questions

ZTE OLT (Optical Line Terminal) devices are widely deployed in FTTx networks globally, including the popular ZTE C300 and C600 series. This FAQ addresses real technical concerns from pre-sales

### What are OLT, ONU, ONT and ODN in PON?

On the other hand, the secondary optical splitting solution is used on roadsides or in rural areas and can cover a wide range of ODN nodes, saving



### How to Choose OLT for Small, Medium, and Large ISP

Discover how to choose the right OLT for small, medium, and large ISP networks. Learn about user capacity, uplink bandwidth, and VSOL OLT

### What is OLT and Why is it Important in Fiber Networks

What is Optical Line Terminal (OLT)? An OLT is the main device in fiber networks, converting



signals and managing data for fast, stable internet



### Guide to Optical Line Terminal (OLT) Classifications:

OLTs with a single power supply typically require only one power module, whereas OLTs with dual power supplies are equipped with two power

### What Is an OLT? , Definition, Function & Role in GPON

Learn how OLT works in GPON and FTTH networks. Covers OLT architecture, upstream/downstream process, wavelengths, and 2025 technology



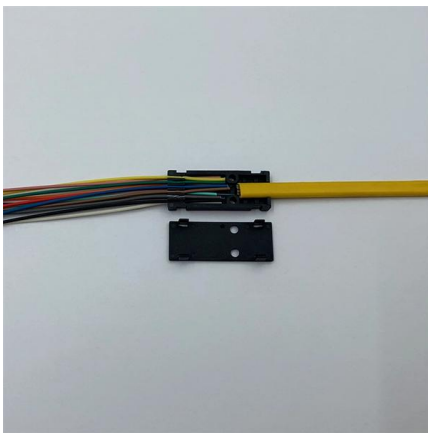
### What is OLT? How many types are there?

EPON OLT: Supports EPON (Ethernet Passive Optical Network) technology with symmetrical upstream and downstream bandwidth of 1.25Gbps,



## Basic Knowledge About Optical Line Terminal (OLT)

Basic Knowledge About Optical Line Terminal (OLT) With increasingly advanced and matured technologies in telecommunication network, Fiber to the Home (FTTH) has drawn much



## Read the Key Functions of the Optical Line Terminal (OLT)

Optical Line Terminals (OLTs) are a crucial component of Passive Optical Networks (PONs) and are used by service providers as the endpoint

## Small-Capacity OLT vs Large-Capacity OLT: Pros,

Compare small-capacity and large-capacity OLTs, including VSOL chassis models, to find the best FTTH solution for your network needs.



## Optical Line Terminal (OLT)

An optical line terminal ( OLT) is hardware that is used at the endpoint of the passive optical network. In this article, we will discuss Optical Line Terminal



## What Is an OLT? , Definition, Function & Role in GPON

In short: The OLT (Optical Line Terminal) is the central control unit of a Passive Optical Network (PON). It converts data signals, manages bandwidth,



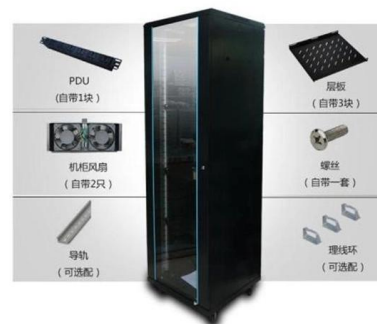
## OLT and ONT

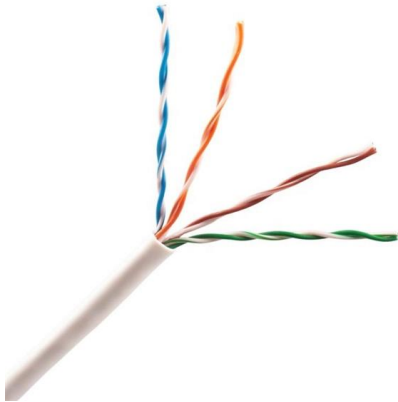
OLT and ONT - what are their roles in GPON network? OLT (Optical Line Terminal) OLT and ONT? Lets start with OLT then. The main function of OLT is to control

## What is OLT? How many types are there?

GPON OLT: Supports GPON (Gigabit Passive Optical Network) technology, providing 2.5Gbps downstream and 1.25Gbps upstream, widely used

### 可选配件





## Optical Line Terminal (OLT) The Ultimate Guide

The guide demystify what an OLT is, how it operates, the different technologies and the knowledge for configuration, and compatibility.

## Optical Line Terminals Selection Guide: Types, Features

The OLT performs bandwidth allocation procedures to smooth delivery of data arriving in bursts from customers. Linking the OLT components to available

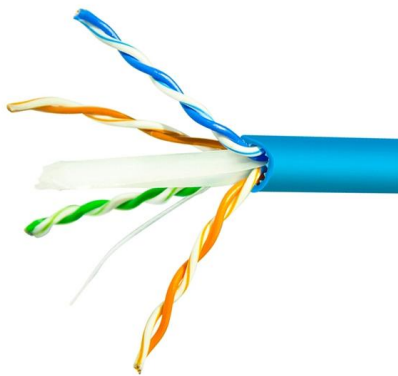


## Optical Line Terminals (OLT): The Heart of Fiber-Optic Networks

Optical Line Terminals (OLT) are the backbone of fiber-optic networks, managing the flow of data between service providers and customers. By supporting high-speed data transmission, bandwidth

## What is OLT? The Ultimate Guide to Optical Line Terminals

Choosing between a Huawei or ZTE OLT depends on your specific growth plans. If you are looking for the absolute cutting edge of distributed



## Mastering OLT Technology for Enhanced Network Performance

The OLT consists of both hardware and software components, which work together to manage and control the flow of data between the service provider's network and the end-users. The

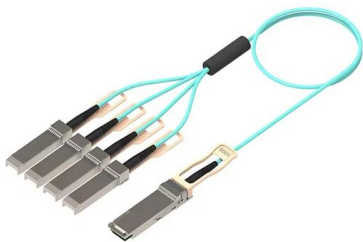
## How Optical Line Terminals (OLTs) Are Revolutionizing High-Speed

An Optical Line Terminal (OLT) is a high-capacity device that serves as the central hub of a Passive Optical Network (PON). Positioned in a service provider's data center or central office, the



## Guide to Optical Line Terminal (OLT) Classifications: Detailed Types

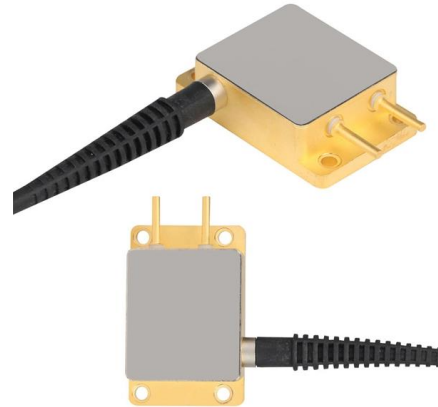
In modern communication networks, optical line terminal (OLT) is the core device to realize point-to-multipoint (P2MP) in passive optical network (PON) architecture. The OLT is





## Optical line termination

An optical line termination (OLT), also called an optical line terminal, is a device which serves as the service provider endpoint of a passive optical network. It provides two main functions: 1. to perform conversion between the electrical signals used by the service provider's equipment and the fiber optic signals used by the passive optical network.



## OLT in Networking: Definition, Functions & Features

Explore the key functions and working of Optical Line Terminal (OLT) in PON architecture networking for high-speed fiber optic communication In the

## Guide to Optical Line Terminal (OLT) Classifications: Detailed Types

In modern communication networks, optical line terminal (OLT) is the core device to realize point-to-multipoint(P2MP) in passive optical network (PON) architecture. The OLT is responsible not only for



## GPON OLT Basics and Beyond: A Comprehensive

A typical GPON OLT device comprises the following components: PON Ports: Optical interfaces on service line cards. Using optical modules, they



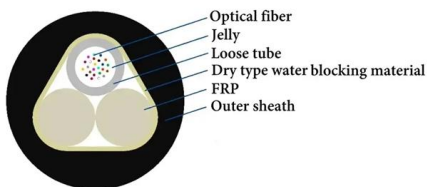
## Guide to Optical Line Terminal (OLT) Classifications:

In modern communication networks, optical line terminal (OLT) is the core device to realize point-to-multipoint (P2MP) in passive optical network (PON)



## All You Need To Know About OLT Equipment

In the application of PON technology, OLT equipment is an important local equipment, which realizes the functions of: 1. Connected with the front-end



## Gigaopto --Professional Optical Transceiver Manufacturer

Hier sollte eine Beschreibung angezeigt werden, diese Seite lässt dies jedoch nicht zu.





## Contact Us

---

For datasheets, pricing, or custom telecom energy solutions, please visit:  
<https://www.koskolong.co.za>