



# How many layers remain in the core switch





## Overview

---

Typically, core switches are Layer 3 switches equipped with robust network management capabilities. They are characterized by numerous ports and high bandwidth, offering greater reliability, redundancy, throughput, and lower latency compared to access and aggregation switches. It can be considered a central network layer that performs all the functions, like monitoring traffic and empowering the whole system. Engineered to aggregate massive volumes of data from distribution switches, it provides ultra-low latency and maximum throughput to ensure uninterrupted routing and packet. The primary transmission and routing of data signals take place at the core layer only. It's responsible for accurately routing communication among layers and departments of different sections.



## How many layers remain in the core switch

---



### Understanding Core Switch: What It Is and How to

Typically, core switches are Layer 3 switches equipped with robust network management capabilities. They are characterized by numerous ports and

### Which Layer Is the Core Switch Really In? 2026 L2 vs

Which layer is the core switch? The core switch is the physical core layer. It can be considered a central network layer that performs all the functions,



### What Is a Core Switch?

Unlike access or distribution switches, a core switch is optimized for Layer 3 performance, modular scalability, and redundancy. In smaller networks, it may be combined with the distribution layer in a

**unsupervised\_topic\_modeling/topics  
/en/17/100/50/topics at**

Contribute to



annontopicmodel/unsupervised\_topic\_modeling  
development by creating an account on GitHub.



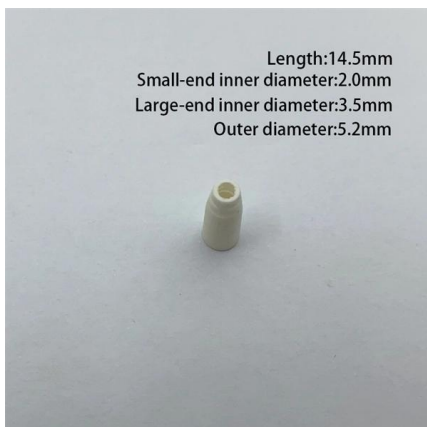
### What Is a Core Switch in a Network?

Low latency is mandatory, as the core switch must forward packets with minimal delay to avoid network slowdowns. To ensure the network remains operational during component failure, core



### GTA 5 Browser

GTA 5 Browser lets players jump into quick, streamlined crime-filled missions directly from their web browser without any installation.



### OneUptime , The Open-Source Observability Platform

OneUptime is an open-source complete observability platform. Monitor websites, APIs, and servers. Get alerts, manage incidents, and keep customers informed



## What Is a Core Switch? Network Backbone Architecture Guide

To achieve backbone speeds, a core switch must operate at Layer 3 of the OSI model, bridging the gap between traditional MAC-based switching and IP-based routing.



## Understanding Core Switch: What It Is and How to

A core switch is not merely a type of switch but rather denotes the switch that operates at the core layer (the network's backbone). Positioned at the

## What is a Core Switch , Functions and Difference over Normal Switch

Multiple data switches are typically employed at the core layer of a network to route a huge volume of data to the levels in the hierarchy. Another rationale for utilizing numerous data



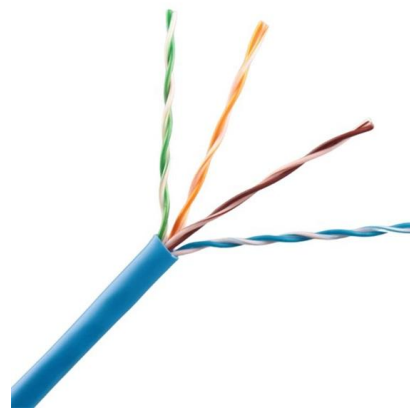
## Gaming

Find in-depth gaming news and hands-on reviews of the latest video games, video consoles, and accessories.



## What is a Core Switch , Functions and Difference over Normal Switch

What is a core switch and how it works? This article builds the basics of this kind of switch for the ones who don't know anything about it. What is a Core Switch? It is a powerful

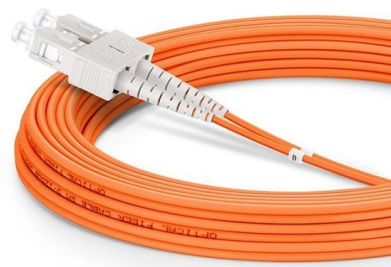


## News

Conclusion Incorporating these core switch insights into your network engineering repertoire can significantly improve your operational efficiency and effectiveness

## Manchester City Best Players: Top 10 Currently Ranked

Explore the list of Manchester City best players currently, led by Erling Haaland, Marc Guehi, Bernardo Silva - based on their overall performance & impact.





## Core Switch vs. Distribution Switch vs. Access Switch

The core layer, distribution layer (layer 2), and access layer (layer 3) are the three layers used to build hierarchy networks for industrial, domestic, and commercial



## Core Switch vs. Distribution Switch vs. Access Switch

The access devices in subnets can be modems, video display units, receiver audio phones, IP-based devices, etc. Note: The core layer is accessed by network

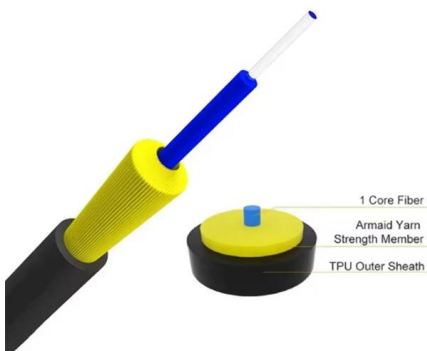
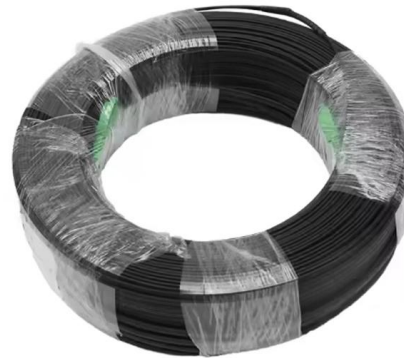


## Breaking News, Latest News, World News,

Top News News Update Most Read World News Metro Entertainment Editorial Front Page Today Subscribe to digital copies of our newspaper Business Features

## Wiley Online Library , Scientific research articles, journals, books

Hier sollte eine Beschreibung angezeigt werden, diese Seite lässt dies jedoch nicht zu.



## What Is a Core Switch in Networking?

What Is a Core Switch in Networking? It's more than just a switch; it's the central nervous system of your network infrastructure. A core switch operates

## Core Switch Explained: Key Functions and Benefits

What Is a Core Switch A core switch is vital in a network's design, mainly working at Layer 2 of the OSI model. It can also work at Layer 3. These devices handle fast packet forwarding and lots



## Differences Between the Core Switch and Normal

A core switch is not a type of switch, but a switch placed at the core layer (the backbone of the network). Generally, large-scale enterprise networks





## Which Layer Is the Core Switch Really In? 2026 L2 vs

A core switch is a high-capacity switch that integrates with the other switches and acts as a backbone of the network. Usually, complex network



## Understanding the Core Switch: Key Differences and Uses

A: Core switches add value to the aggregation layer of the network by effectively merging the output of several distribution layers, managing data flow,

## What Is a Core Switch in a Network?

Core switches are optimized for high-speed routing and forwarding, operating at Layer 3 of the network model. They feature high-speed uplinks but have a lower port density because they



## ITPro Today, Network Computing, IoT World Today combine

Our news writers and editors remain dedicated to delivering high-quality coverage of a wide range of topics important to IT professionals on TechTarget . While the ITPro Today,



## Core Switches: The Backbone of High-Speed Data Networks

Advanced Layer 3 Switching: Core switches are Layer 3 switches, meaning they perform routing functions in addition to traditional Layer 2 switching. This allows them to route traffic between



## Notice regarding Live2D Cubism 5.3 ? VTube Studio may support

As long as that remains unclear, I cannot give an estimate for 5.3 support in VTube Studio. o Until Live2D Inc. release a stable, fully functional SDK, I cannot integrate it into VTube



## Latest news & breaking headlines , The Times and The

The latest breaking UK, US, world, business and sport news from The Times and The Sunday Times. Go beyond today's headlines with in-depth



## Contact Us

---

For datasheets, pricing, or custom telecom energy solutions, please visit:  
<https://www.koskolong.co.za>