



Adam Tas Corridor Energy

How many meters apart are the cable tray supports





Overview

The chart of the maker always has to be consulted, since a heavier metallic tray may be capable of bending a little more. The National Electrical Code (NEC) covers many aspects of cable tray supports and fittings. When installing two cable trays in parallel at the same height, the distance between them should be no less than 0. This guide covers cable ladder systems, cable tray systems, channel support systems and associated supports intended for the support and accommodation of cables and possibly other electrical equipment in electrical and/or communication systems installations. Installation should only be attempted by site personnel well versed in provincial and federal electrical. Our cable support systems are part of the Industrial installations area of application and, for all products used in industry, the following applies: They must withstand different weather and ambient conditions, as well as mechanical loads.



How many meters apart are the cable tray supports



Beama Best Practice Guide , Installation Of The System , Cable

The following recommendations are intended to be a practical guide to ensure the safe and proper installation of cable ladder and cable tray systems and channel support and other support systems.

Cable Tray Support Spacing: Key Guidelines Explained

Explore the essential cable tray support spacing requirements for safe and efficient installations. Learn NEC guidelines for perforated, ladder, and wire mesh trays.



Cable Tray Spacing Standards for Installation and Safety

When installing two cable trays in parallel at the same height, the distance between them should be no less than 0.6 meters. This spacing is crucial for adequate maintenance access, ease of

Best Practice Guide to Cable Ladder and Cable Tray

Cable ladder and cable tray systems The following recommendations are intended to be a



practical guide to ensure the safe and proper installation of



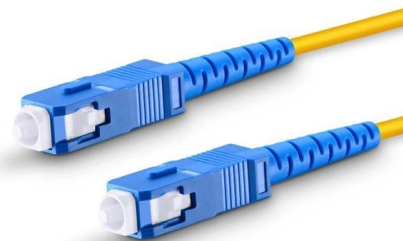
Cable Tray Supports , Information by Electrical Professionals for

How far distance between supports? 2002 code
How far distance between supports? 2002 code
Support for the cables inside or for the tray?
What type of tray? Ladder or ventilated,



Cable Tray Installation Guidelines for Engineers

Cable Tray Installation Guidelines for Engineers
Cable trays shall be installed according to the latest revision of the NEC, NEMA VE 2, and manufacturer's installation instructions. Cable tray elbows



Calculating cable tray weights and support requirements

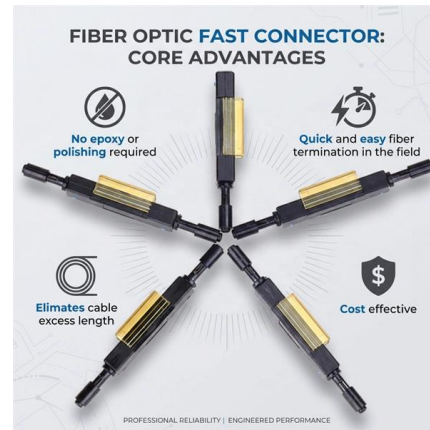
I recently came across a situation where there were several large cables (42 500MCM cables) being run in a single cable tray. Just prior to installation there became a concern over the





Telecommunications Horizontal Cabling and Support Structure

The maximum horizontal distance shall be 76-meters (250 ft). For ease of cable installation and future expansion in hallway or major distribution routes, cable trays are the preferred method for distributing



Vertical Straight Cable Tray Support Spacing , Eng-Tips

In vertical trays, cables shall also be secured at intermediate locations as necessary to keep all cables completely within and secured to the tray." So, it is no indication what could be the

Product Advice: Bracket Spacing Considerations , Armaflo

Bracket Spacing Considerations: At Armaflo, we understand the importance of optimizing efficiency and cost-effectiveness in every aspect of your cable containment installation projects. One common



A Guide to Installing and Supporting Electrical Cable Trays

A professional guide to installing electrical cable tray systems per NEC Article 392. Covers support, securing cables, and fill calculations.



Best Practice Guide to Cable Ladder and Cable Tray Systems

The radius for cable ladder and cable tray fittings is usually determined by the bending radius and stiffness of the cables installed on the cable ladder or cable tray.



INSTALLATION GUIDE

Center hung tray supports allow for quicker and easier cable installation by allowing cables to be deposited into tray systems from each side. There is a maximum load capacity per hanger of 318 kg

Best Practice Guide to Cable Ladder and Cable Tray Systems

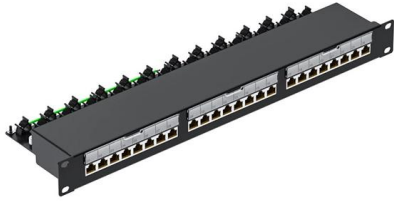
Cable ladder systems and cable tray systems are designed for use as supports for cables and not as enclosures giving full mechanical protection. They are not intended to be used as ladders, walk ways





Cable Tray Installation

Use the right cable tray conduit clamps and brackets for wall, ceiling, or floor support. Make sure supports are spaced properly, typically 1.5 to 3 meters apart, depending on tray type and load.



Cable Tray Technical Guide A practical guide to product selection and

SOLID-BOTTOM CABLE TRAY Providing additional cable protection, solid-bottom cable tray is sometimes preferred to support and protect numerous small instrumentation and control cables.



Cable tray installation requirements- ZM Technology Co., Ltd.

As a supporting project of the wiring project, the cable tray has no special normative guidance, and the specifications and forms of various manufacturers lack universality.

Cable Support Distances

Cable Support Distances Although BS 7671 touches on the subject of cable supports, it does not detail specifically what these support distances should be. Section 522.8 (Other Mechanical Stresses (A))



Best practice guide to cable ladder and cable tray

Cable ladder and cable tray systems The following recommendations are intended to be a practical guide to ensure the safe and proper installation of



Cable Tray Technical Guide A practical guide to product selection and

Cable tray length is selected based on the load to be supported, the distance between the supports (also referred to as the span), and handling and installation constraints.



A Guide to Installing and Supporting Electrical Cable Trays

Cable Tray Support Span: The distance between supports is a critical calculation. The cable tray support span must be determined based on the manufacturer's





Cable Tray Size Chart and Selection Guide

Selecting the appropriate electrical cable tray dimensions is a critical decision that directly impacts the safety, efficiency, and longevity of any industrial or commercial electrical installation.



Guide to cable support systems

The load capacity of the cable trays according to the support width can be read off in the diagram using load curves - here, shown as an example for a cable tray with the tray widths 100 to 600 mm.

CABLE TRAYS GENERAL INFORMATION AND

Cable tray systems are to be installed so they are accessible. If possible 300mm minimum should be left above or between installed systems to allow for cable



CABLE TRAY SYSTEMS GUIDE

Steel Ladder System Hubbell's NEXTFRAME® Ladder Tray is the effective and widely used cable runway that supports and delivers bundles of cable between cabinets, racks, and closets, along



Ultimate Guide to Cable Tray Hanging Systems: Choice and Installation

Your electrical system is supported by a cable tray hanging system. It contains the wires in a secure, tidy, and elevated state. To avoid the weight hanging or structural collapse, the weight



Criteria for Sizing, Designing, Installing and Supporting of Cable-Tray

Vertical-tray supports shall provide secure means, other than friction, for fastening cable trays to supports. 9.7.4 Supports shall be located so that connectors between horizontal straight sections of

Cable Support Distances

The length between support positions will change depending on the cable design, size, materials and weight. For example, an MDPE sheathed cable will be stiffer and therefore require a greater distance





Chapter 14 Cable Support systems



Cable separation within cable management systems. More use of protection by location than is typical in US installations. The use of basket tray is typical for light weight last meter cable runs in onshore.

Contact Us

For datasheets, pricing, or custom telecom energy solutions, please visit:
<https://www.koskolong.co.za>