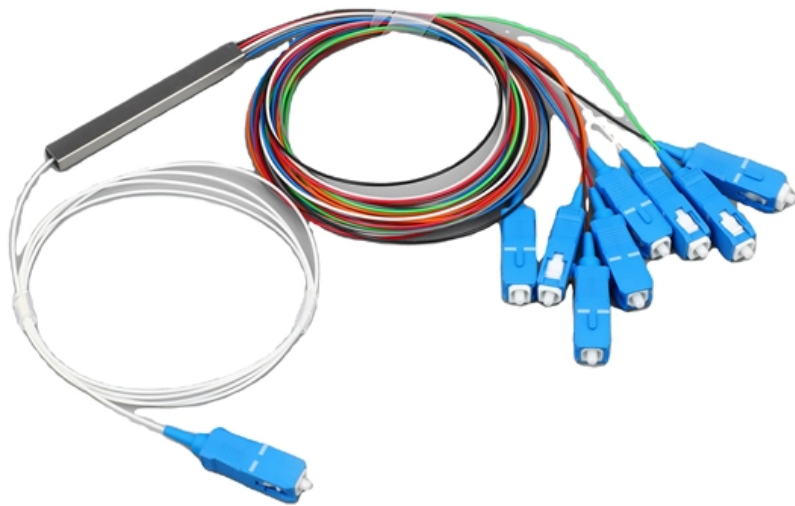




**Adam Tas Corridor Energy**

# **How many meters is a suitable span for cable trays**





## Overview

---

When installing two cable trays in parallel at the same height, the distance between them should be no less than 0. This spacing is crucial for adequate maintenance access, ease of inspection, and ensuring proper airflow for effective heat dissipation. maintain spacing or to keep cables in place when the tray is ect the minimum bend ra-dius for cables as they exit the bottom of the cable tray. A rung spacing of 6 to 9 inches (150 to 230 mm) is preferable when the cable tray cont d for instrumentation and control applications that require.



## How many meters is a suitable span for cable trays

---

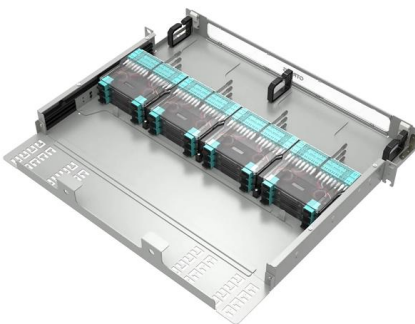
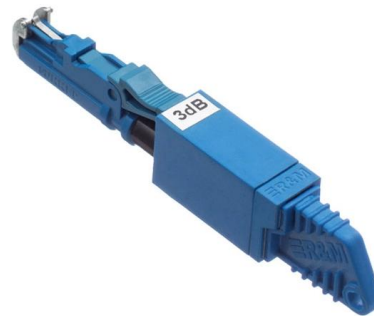


### How Far Can Cable Tray Support Span?

Typically, cable trays can span anywhere from 6 to 24 feet without additional support. Several factors influence the maximum span length of a cable

### How to Calculate Cable Tray Span for Your Project

The cable tray span chart included in these PDFs will guide you in choosing the appropriate tray and span based on the specific cables and environmental factors of your installation.



### B-Line series Cable Tray Design Considerations

Our wind certification report provides you with list of acceptable B-Line series cable tray supports, fittings and covers based off of the environmental conditions, cable loading, and type of cable tray in your

### Cable Tray Spacing Standards for Installation and Safety

How much horizontal space is needed between power cable trays and signal cable trays? To



minimize electromagnetic interference (EMI), the horizontal spacing between power and

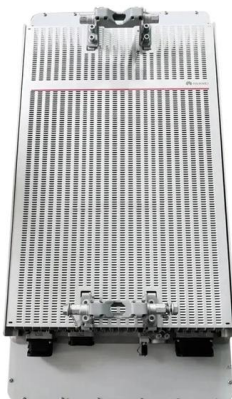
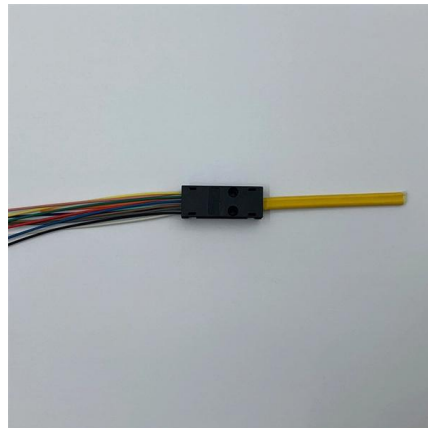


### **Precautions for Cable Tray Installation**

The overall layout of the cable tray should be short distances, economic feasibility, safe operation, and meet the requirements for construction, maintenance, and

### **Low Price Vertical Cable Tray Customizable Cable Parts , Alibaba**

Buy low-price vertical cable tray with customizable options starting at \$0.95 per unit. Available in various materials, ideal for solar cable management and industrial use.



### **A Guide to Installing and Supporting Electrical Cable Trays**

A professional guide to installing electrical cable tray systems per NEC Article 392. Covers support, securing cables, and fill calculations.



## Cable Support Distances

Although BS 7671 touches on the subject of cable supports, it does not detail specifically what these support distances should be. Section 522.8 (Other Mechanical Stresses (A)) in that document



## Cable Tray Technical Guide A practical guide to product selection and

A practical guide to product selection and installation This guide for engineers and installers has been developed by ABB as a practical reference regarding cable tray characteristics, installation, and

## Cable Tray Systems: Requirements and Best Practices

Comprehensive guide to cable tray systems requirements: tray types, materials, loading, supports, bonding, routing, and best practices for safe electrical cable management.



## Proper Cable Tray Sizing for Efficient Installations

Proper cable tray sizing is critical for the efficient and safe management of electrical wiring in industrial, commercial, and residential



## CABLE TRAYS GENERAL INFORMATION AND

Cable tray systems are to be installed so they are accessible. If possible 300mm minimum should be left above or between installed systems to allow for cable



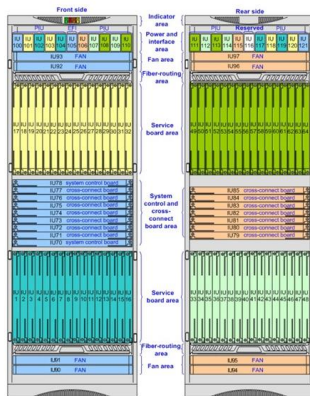
## Cable Tray Support Spacing: Key Guidelines Explained

Explore the essential cable tray support spacing requirements for safe and efficient installations. Learn NEC guidelines for perforated, ladder, and wire mesh trays.

## Cable Tray Technical Guide A practical guide to product selection and

Cable tray length is selected based on the load to be supported, the distance between the supports (also referred to as the span), and handling and installation constraints.



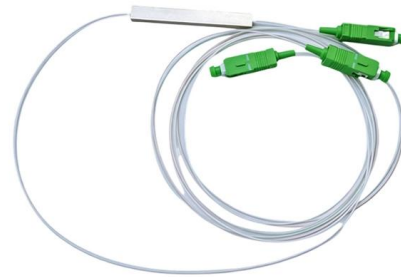


## Cable Tray SHIB NAL

Cable trays are not raceways, but they are treated as a structural component of a facility's electrical system. Cable trays are a part of a planned cable management system to support, route, protect and

## CABLE TRAY SYSTEMS GUIDE

The design and cost of the cable tray is greatly affected by this designation. In order to determine the most appropriate and economical system, a class should be selected that reflects the actual total

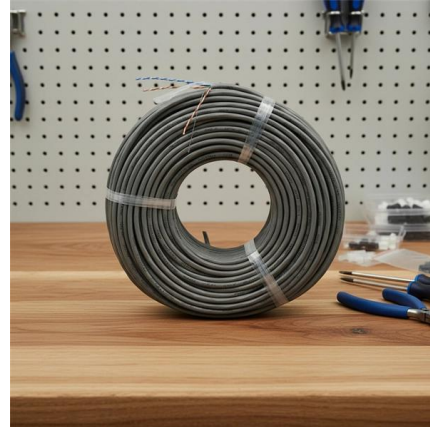


## How to Calculate the Cable Tray Support Quantity

Learn how to accurately calculate cable tray support quantities in electrical installation projects. Our guide covers methods,

## An In-depth Analysis for Optimal Cable Tray Support Span

The constructability for the longer span obtained from finite element analysis has been validated in view of manual handling of the cable tray.



## Best Practice Guide to Cable Ladder and Cable Tray Systems

This guide covers cable ladder systems, cable tray systems, channel support systems and associated supports intended for the support and accommodation of cables and possibly other electrical



## Cable Tray Sizing & Load Calculations Made Simple

Pick a span (often 1.5-3 m) and verify the uniform load rating exceeds your cable weight plus a safety factor. Check deflection limits to protect terminations and fibre.



## CABLE TRAY SYSTEMS GUIDE

Some applications may require the cable tray to support the weight of a single, dead object in addition to the cable loads. Specifications typically require this to be applied at the midpoint of the span between





## Understanding Cable Trays Specifications: Length, Width, Height, and

The straight length of an ordinary cable tray is generally 2 meters. However, other common lengths include 3 meters, 4 meters, and 6 meters. Cable trays that extend beyond 2 meters, such as those



## High Corrosion Resistant China FRP Cable Trays for Industry

Find high-quality china FRP cable trays for oil and chemical industries. Durable, corrosion-resistant, and available in various sizes and configurations.

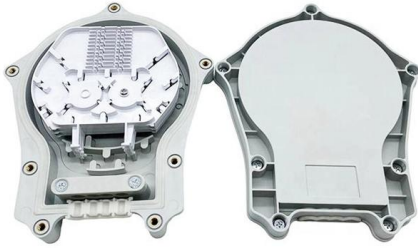
## Cable Tray Spacing Standards for Installation and Safety

Other Cable Tray Spacing Requirements Spacing in Straight Sections For horizontal sections where cable trays are laid out in a straight line, the typical



## Cable Support System Requirements

This makes MACs a cinch. The recommended span between Unipath support arms is 4-5 ft, ensuring that cables see minimal sagging. Compared to other cable



## **Trunking Space Factor Calculator , Free Tool , Electrical Tools**

Calculate the correct cable tray or trunking size with BS 7671 space factor compliance, cable segregation warnings, and support spacing recommendations.



## **Contact Us**

---

For datasheets, pricing, or custom telecom energy solutions, please visit:  
<https://www.koskolong.co.za>