



Adam Tas Corridor Energy

How many meters is the cable tray span





Overview

For horizontal sections where cable trays are laid out in a straight line, the typical support span (distance between supports) should range from 1. This spacing is crucial for adequate maintenance access, ease of inspection, and ensuring proper airflow for effective heat dissipation. The NEC requires that cable trays must be supported by members at an interval specified by the cable tray manufacturer, but not more than 5 feet for horizontal runs to support the weight of the cables and other loads. IEC 61537 and IEC 60364 require evaluating tray dimensions based on cable quantity, type, and layout configuration. maintain spacing or to keep cables in place when the tray is ect the minimum bend ra-dius for cables as they exit the bottom of the cable tray.



How many meters is the cable tray span

Cable Tray Support Spacing: Key Guidelines Explained



Explore the essential cable tray support spacing requirements for safe and efficient installations. Learn NEC guidelines for perforated, ladder, and wire mesh trays.

B-Line series Cable Tray Design Considerations

As an industry leader in cable tray, Eaton offers one of the widest ranges of cable management solutions available in the market today with its B-Line series portfolio. With unmatched quality and service, we



How to Calculate Cable Tray Span for Your Project

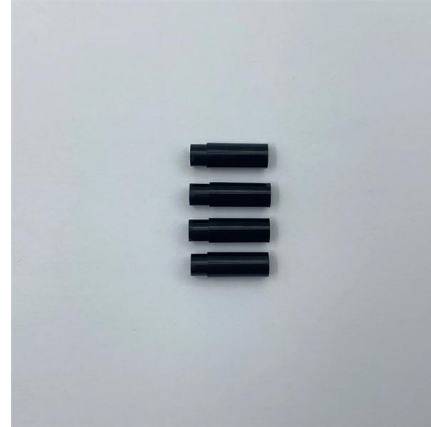
It influences how the tray can accommodate varying loads, including different cable types and weights. Understanding the specific span requirements for various tray materials (such as steel,

How to Calculate the Cable Tray Support Quantity

Learn how to accurately calculate cable tray support quantities in electrical installation



projects. Our guide covers methods,



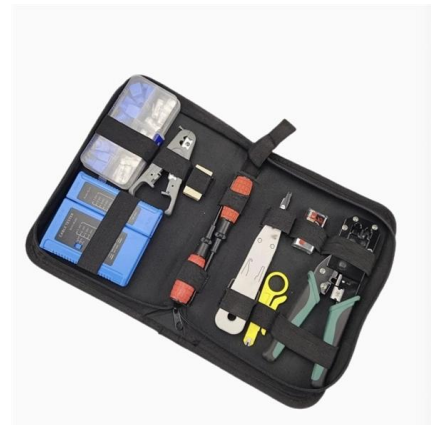
How to Fix Common Cable Management Issues using

Discover common cable management problems and how cable tray accessories effectively solve them to ensure safety and performance.



Cable Tray Support Spacing: Key Guidelines Explained

Explore the essential cable tray support spacing requirements for safe and efficient installations. Learn NEC guidelines for perforated, ladder, and wire



Cable Tray Spacing Standards for Installation and Safety

Other Cable Tray Spacing Requirements Spacing in Straight Sections For horizontal sections where cable trays are laid out in a straight line, the typical



Cable Tray Technical Guide A practical guide to product selection and

Cable tray length is selected based on the load to be supported, the distance between the supports (also referred to as the span), and handling and installation constraints.



TECHNICAL AND SIZING DATA

The supports are not placed at the ends of each tray sections, but instead are located at a distance no greater than 1/4 of the length of the tray (e.g. 1.5 meters for a 6 meter tray).



Cable Tray Load Calculation and Sizing: Your Easy Guide

Worried about cable tray capacity? Learn simple cable tray load calculation steps. This guide helps you pick the right tray every time, keeping



How Far Can Cable Tray Support Span?

Cable trays are an essential component of any electrical infrastructure. Their span length varies depending on several factors, but they



Buy China Wholesale Manufacturer Wholesale Price

Get manufacturer wholesale price large- span hot-dipped galvanized ladder cable tray \$1.5 at wholesale discount prices from a reliable verified supplier, Liaocheng



Explosion Proof Cable Trays in Chemical Plants

Essential guide to explosion proof Cable Trays in Chemical Plants. Learn about tray zoning, materials, design, installation, & safety for hazardous

CABLE TRAY SYSTEMS GUIDE

Some applications may require the cable tray to support the weight of a single, dead object in addition to the cable loads. Specifications typically require this to be applied at the midpoint of the span between



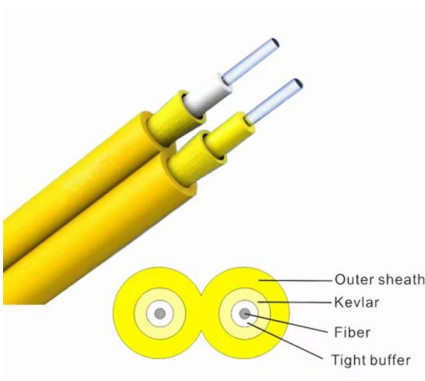


Tray and Ladder Sizing by Cable Capacity Calculator - IEC

Calculate tray and ladder sizes by cable capacity with our IEC-compliant calculator for efficient and accurate electrical installations.

How Far Can Cable Tray Support Span?

Tray Type Different types of cable trays have varying load-bearing capacities. Solid-bottom trays, for example, can support more weight than ladder



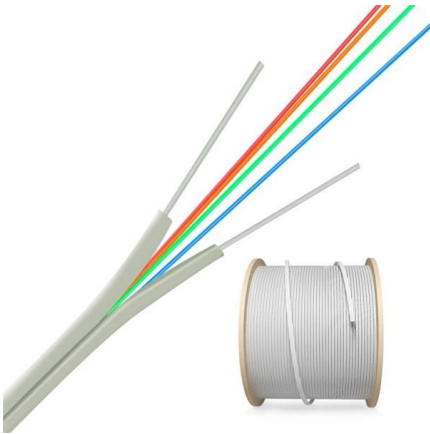
Cable Tray Size and Dimensions: How to Choose the

Learn how to calculate the perfect cable tray size and dimensions for your electrical project. This guide covers load capacity, fill ratios, and industry

Cable Tray Roll Forming Machine

fixed rung spacing of 100 millimeters on center
Trough cable tray is generally used for moderate heat generating applications with short to intermediate support





Cable Tray Size Calculation with Load & Spacing , Full Practical Guide

Audio tracks for some languages were automatically generated. Learn more Learn how to calculate the size of a perforated cable tray with real examples and clear explanations!

CABLE TRAY SYSTEMS GUIDE

Commonly called the Load Class, this defines the load-carrying capability of the tray for a specific support span distance. The design and cost of the cable tray is greatly affected by this designation.



How Far Can Cable Tray Support Span?

Spanning Capabilities Maximum Span Length One of the most common questions regarding cable trays is their span length. How far can they stretch? The answer depends on several factors, including the

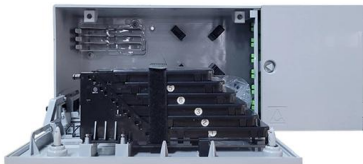
How Many Cables Can a Cable Tray Hold? A

How Many Cables Can a Cable Tray Hold? A Comprehensive Guide During the design of a cable management system, one of the most important



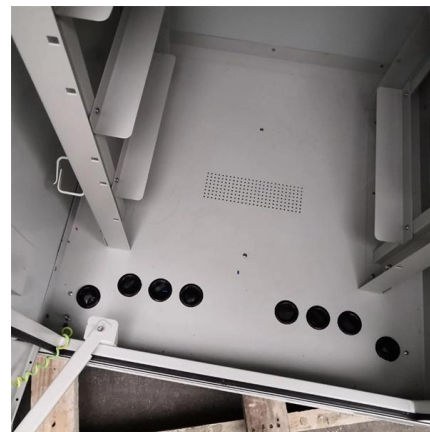
Cable Tray Sizing & Load Calculations Made Simple

Step 2: Choose Tray Type and Width For heavy power cables or long spans, ladder trays typically perform best. For mixed small cables, perforated works well. Width is set by total cable area



Cable Tray Spacing Standards for Installation and Safety

For horizontal sections where cable trays are laid out in a straight line, the typical support span (distance between supports) should range from 1.5 meters to 3 meters.



Trunking Space Factor Calculator , Free Tool , Electrical Tools

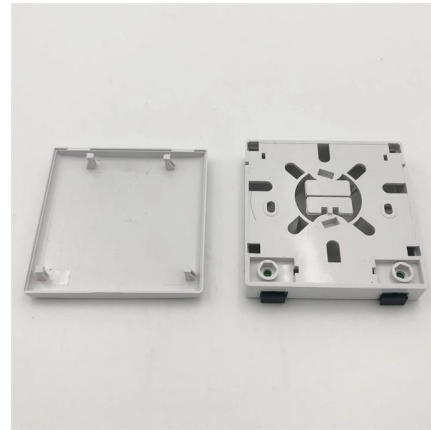
Calculate the correct cable tray or trunking size with BS 7671 space factor compliance, cable segregation warnings, and support spacing recommendations.





Cable Support Distances

The cable should not be allowed to have a straight vertical run without the addition of a tension relieving section. This normally involves the cable having a short horizontal section (at least 1 metre) included



Cable Tray Dimensions Guide: Standard Sizes, Tray

We will first explain standard cable tray dimensions used across the industry, then examine how dimensions vary by tray type, and finally show how to

Understanding Cable Trays Specifications: Length, Width, Height, and

The straight length of an ordinary cable tray is generally 2 meters. However, other common lengths include 3 meters, 4 meters, and 6 meters. Cable trays that extend beyond 2 meters, such as those



Contact Us

For datasheets, pricing, or custom telecom energy solutions, please visit:
<https://www.koskolong.co.za>