



**Adam Tas Corridor Energy**

# **How many nm are used in single-mode optical cables**





## Overview

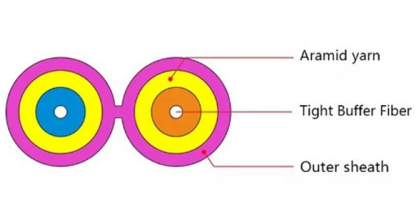
---

Multimode fiber is designed to operate at 850 and 1300 nm, while singlemode fiber is optimized for 1310 and 1550 nm. In fiber-optic communication, a single-mode optical fiber, also known as fundamental- or mono-mode, is an optical fiber designed to carry only a single mode of light - the transverse mode. This allows the cables to transmit data over much longer distances than multimode fibers, with less signal loss and better quality. All three fiber types are characterized as " low-water peak ", meaning the maximum attenuation requirement at 1383 nm is equivalent to the maximum attenuation specified at 1310 nm.



## How many nm are used in single-mode optical cables

---



### Single Mode vs Multimode Fiber: What are the

Single mode fiber usually uses laser diodes as a light source. The monochromatic nature of laser light means it emits at a single, predictable

### Single Mode Fiber Wiki: Concerning Types and

Generally, single mode cable has a narrow core diameter of 8 to 10 $\mu$ m (micrometers), which can propagate at the wavelength of 1310nm and



### Fiber Optic Cable Types Explained

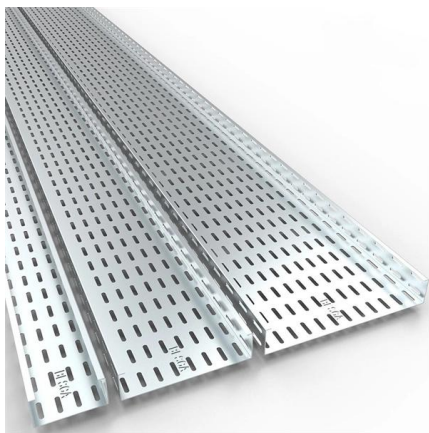
Single mode and multimode fiber optic cables differ not only in their core diameter but also in the wavelengths of light that they use to transmit data. Single mode

### Multimode vs Single Mode Fiber Optic Cables: Full

Compare multimode vs single mode fiber to understand their core differences and



applications. Learn which fiber type best fits your networking

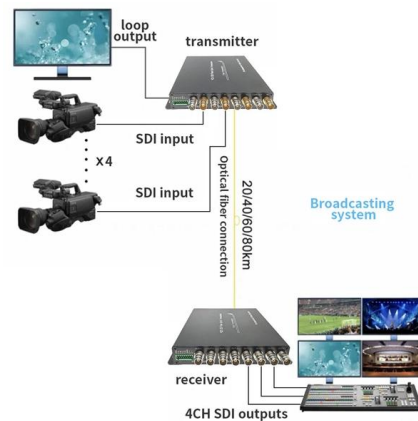


## Understand Single Mode Fiber Types And Application

In optical fiber technology, single mode fiber (SMF) or monomode fiber, is an optical fiber that is designed for the transmission of a single ray or mode of

## Single Mode vs Multimode Fiber, What is The

Learn the key differences between single mode vs multimode fiber cables and choose the right one for your fiber optic system.



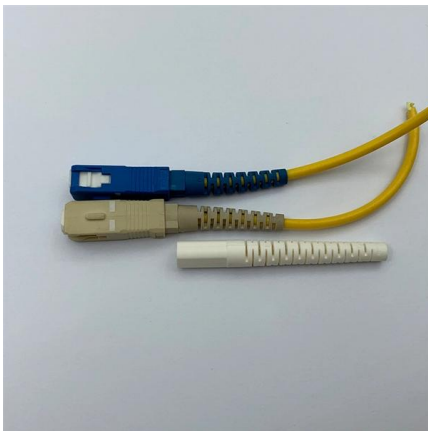
## Singlemode vs Multimode Fiber Optic Cable

We breakdown the differences between single mode and multimode fiber optic cable, covering aspects like physical structure, bandwidth over



## Recommendation ITU-T G.652 (08/2024)

This document outlines the specifications for a single-mode optical fiber and cable designed for use around the 1310 nm zero-dispersion wavelength, suitable for



## Single-Mode Optical Fiber (SMF)

Draka Single-Mode Fiber (SMF) provides optimum performance in both the 1310 nm and 1550 nm wavelength operation ranges (including the 1565 - 1625 nm L-band), with a low dispersion in the

## Understanding Fibre Optic Cable Types: Single-mode vs

Single-mode and Multimode fibre optic cables are crucial components in various applications, yet distinguishing between the two can be





## Fiber Facts--Yes, You Do Need to Read This

But why does single-mode perform so well and what does it mean in terms of your networking? Single-mode fiber cores are just 9 micron in diameter,

???

The differences between single mode vs multimode fiber lie in the core diameter, wavelength, bandwidth, color sheath, distance, and cost. Read the complete



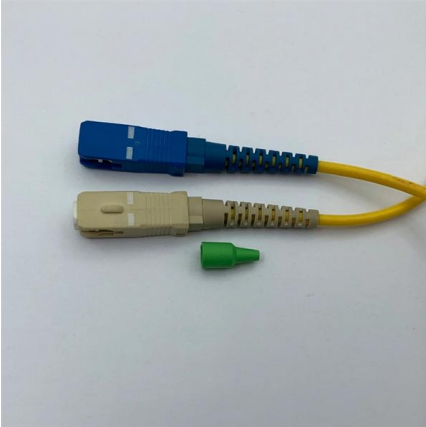
## What are the key specifications of single-mode fiber

Explore the essential specifications of single-mode fiber optic cables, including core size, attenuation rates, bandwidth capabilities, and standard

## IEEE 802.3 Single-mode Optical Fiber Ethernet Standards

Outside Plant (OS2) single-mode has the lowest cabled attenuation of all options, 0.4 dB/km at 1310 nm and 1550 nm, and is ideal for long-haul wide area network (WAN) applications



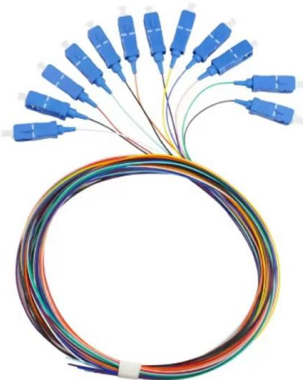


## OS1, OS2 vs OM1-OM5 Fiber Cables: Differences, Speeds, and

Explore the differences between OS1, OS2 (single-mode) and OM1, OM2, OM3, OM4, OM5 (multimode) fibers. Learn their speeds, distances, and ideal uses for data centers and telecom networks.

## Single-Mode vs Multimode Fiber Optic Cables: A Comprehensive

Compare Single Mode vs Multimode fiber optic cables. Expert analysis on distance, bandwidth, 800G compatibility, and TCO for modern network infrastructure.



## Single Mode Fiber Cable Explained

Complex manufactures fiber optic solutions that improve and extend the performance of broadcast operations. Because the Complex US fiber assembly facility has

## Single Mode and Multi-Mode Fiber Cables

Thus single mode fibers usually used in long distance and higher bandwidth applications. Single-mode cable (OS1 & OS2) has a small (8-10





## Fiber Facts--Yes, You Do Need to Read This

There are three main wavelengths used for fiber optics--850 nm and 1300 nm for multi-mode and 1550 nm for single-mode (1310 nm is also a single

## Single-Mode and Multimode Fiber

Single Mode (SM) and Multimode (MM) are the names given to two competing designs of optical fiber based on how many paths of light are transmitted along the fiber core - single mode,



## Single Mode Fiber: Types and Applications

Single mode fiber (SMF) is a type of fiber optic cable that only allows one light mode to transmit at a time. Generally, single

## Optical Fiber Types: Single-Mode vs. Multimode

Explore optical fiber types and fiber optic cable guides. Learn how optical fiber helps transmit data and choose the right cables for your needs.



## Understanding Wavelengths In Fiber Optics

Multimode fiber is designed to operate at 850 and 1300 nm, while singlemode fiber is optimized for 1310 and 1550 nm. The difference between 1300 nm and 1310 nm is

## Single Mode vs Multimode Fiber Cable: Difference

Learn the complete differences between single mode and multimode fiber optic cables, including distance, core size, wavelength, cost, and best



8-Port PLC Fiber Splitter Box

12-Port SC Fiber Splitter Box

Size: 235\*215\*75mm  
Material: ABS, IP65,



## Single-Mode vs. Multi-Mode Fiber Optic Cables

Fiber optics have enabled telecommunications companies to improve data network performance and speed significantly. Fiber optic cables form the foundation of these networks, and to optimize



## Fiber Optic Wavelengths Explained: 850 vs 1310 vs

In practice, network designers often prefer 1310 nm for moderate distances and 1550 nm (or even C-band around 1530-1565 nm) for long-haul or



## Fiber Optic Cable Types - Multimode and Single Mode

Single Mode fibers are identified by the designation OS or Optical Single-mode Fiber. Single Mode cable has a much smaller core (8-9um) than multimode cable and uses a single path (mode) to carry the light.

## Contact Us

---

For datasheets, pricing, or custom telecom energy solutions, please visit:  
<https://www.koskolong.co.za>