



Adam Tas Corridor Energy

How many optical modules should be configured for one switch

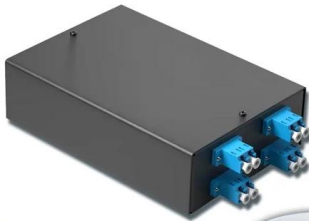




How many optical modules should be configured for one switch

4-port 8-core LC wall-mounted fiber terminal box (empty frame)

Surface painted Scientific plate fiber Cold-rolled steel plate



Lifetime quality assurance

Free shipping

Customizable for telecommunication

How to Choose the Right Optical Transceiver in 2025

When building or upgrading a network, many IT managers focus on switches, routers, and access points--while overlooking one critical piece of the

The Difference Between Single/Dual Fiber and

As fiber optic networks continue to evolve, selecting the right optical transceiver becomes increasingly important. Whether you're designing a short



The Ultimate Guide to SFP Modules (2026): Types,

Confused by SFP vs SFP+? Read the definitive 2026 guide on SFP modules. We explain Single Mode vs Multimode, DDM diagnostics, and how to choose the right

1000BASESX SFP: How to Select the Right Optical Module

? 1000BASESX SFP Module Compatibility Overview Although 1000BASESX SFP modules



follow the same 850nm Gigabit Ethernet standard, real-world compatibility can still vary from one switch or



How to Choose Optical Transceiver Modules

As a bridge between servers and switches in a data center, optical modules are one of the essential products in a data center. Currently, many



3 FAQs of Connecting Switches by Fiber Optical Ports

If the above five conditions are all met, the two optical modules can be connected within a short distance, but attention should be paid to whether the



Configuration Guide for Cisco NCS 1001, IOS XR Release 7.0.1

When you plan to replace a configured optical module with a different type of optical module, you must clear the configurations of the old module before you install the new module. For



What is SFP Module? An Ultimate Guide (2024)

An SFP module is a small, pluggable optical transceiver that fits into the SFP port of a networking switch or other device. Sometimes, it is known as



How to Choose the Right Optical Transceiver Module for You in 2025

Learn how to select the ideal optical transceiver module for your network based on transmission distance, data rate, wavelength, and scalability.

Everything you Need to Know About SFPs

When connecting two network switches, both SFP ports on each switch must use the same wavelength, or similar SFP modules that are compatible with each other.



The Combination of SFP Optical Module and Switch and

Insert four 10G SFP optical modules into the 10-Gbps SFP+ port of one switch in turn, then insert a 40G QSFP optical module into the 40-Gbps



1xN Multi-channel Opto-Mechanical Optical Switch Modules

1xN Multi-channel Opto-Mechanical Optical Switch Module Data Center Overview The 1xN Multi-channel Opto-Mechanical Optical Switch Module is an ideal product with small size and superior optical



How to Choose Optical Modules for Switch Stacking?

To sum up, from the perspective of practicality and economy, DAC should be used for data transmission or switch stacking below 7 meters. AOC is used for data

Guidelines for Interoperability and Compatibility of

Taking 1G SFP optical modules and 10G SFP+ optical modules as examples, they have the same size and can be seamlessly installed onto SFP+ ports on switches,





Optical Transceivers: How to Choose the Right Module

The following article will describe the important types of optical transceivers, so you will know which optical transceiver module fits the needs of your unique network

Configuring Attributes for an Optical Interface

Both the local and remote interfaces do not need to have optical modules installed. The 40GE interface can be connected to four 10GE interfaces on the remote device using a 1-to-4 40GE



400G vs 800G Optical Modules: Differences, Use Cases, and

400G and 800G modules are typically in form factors like QSFP-DD and OSFP, which can fit many high-speed lanes into one module. 400G Optical Modules 400G is already widely

Everything You Need to Know About Optical Modules

Upgrading optical modules involves replacing the module with a higher-capacity module or adding modules to the communication system. Care should



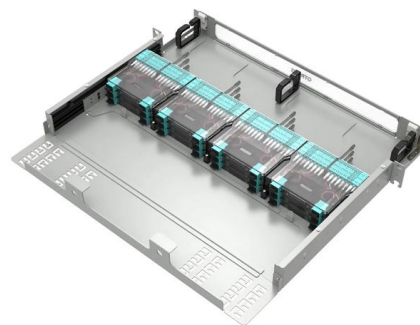
Understanding Optical Modules and Their Role in Data

In conclusion, 1G SFP modules and optical modules, in general, are indispensable components that drive the efficiency and performance of modern



Demystifying Optical Transceivers: Your Top FAQs

FAQ Summary of optical modules: answers on types, compatibility, design, troubleshooting, and glossary for 2025 network upgrades and maintenance.



Use of Third-Party Optical Modules

We recommend that all customers use Extreme Networks optical modules in their Extreme Networks switches. Extreme Networks assumes no liability for third-party optical modules.





The Most Comprehensive Guide Of Optical Modules

Explore the ultimate guide to optical modules. Learn types, functions, performance metrics & how to choose the right module for your fiber network.



Optical Transceiver Types: Use Cases, Compatibility & Buying Tips

Explore optical transceiver types, real-world use cases, and expert buying tips to help you choose the right SFP, QSFP, or AOC/DAC.



How to Match SFP Modules With Your Switch or Media

Learn how to match SFP modules with your switch or media converter by checking compatibility, speed, fiber type, wavelength, and distance.



Follow NCS1001 Network Design Best Practices

The NCS 1001 provides optical amplification, protection switching, and Optical Time Domain Reflectometer (OTDR) capability in a 1RU system supporting up to three



Guidelines for Interoperability and Compatibility of

However, it should be noted that the transmission speed will be limited to 1G instead of 10G. Q: Will compatible modules affect the performance of OEM switches? A:



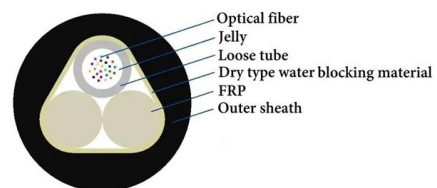
Cisco 10GbE Optics Modules & Optical Standards

Multimode Fiber 10GBase-SR 10GBase-SR is the original multimode optics specification, and is still by far the most commonly used. As it uses a



Everything You Should Know About SFP Modules

Using SFP modules, multiple ports can be configured on the same panel. Most enterprises use switches with at least two or more SFP ports, making





Configure Optical Modules

Configure Optical Modules This chapter describes how to configure the Optical Amplifier Module and Protection Switching Module (PSM). Note When you plan to replace a configured optical module with

Common Optical Modules and Interfaces for Switches

Multi - mode optical modules should be used with multi - mode fibers (typically at 850nm wavelength), and single - mode optical modules should be paired with single - mode fibers (at



Contact Us

For datasheets, pricing, or custom telecom energy solutions, please visit:
<https://www.koskolong.co.za>