



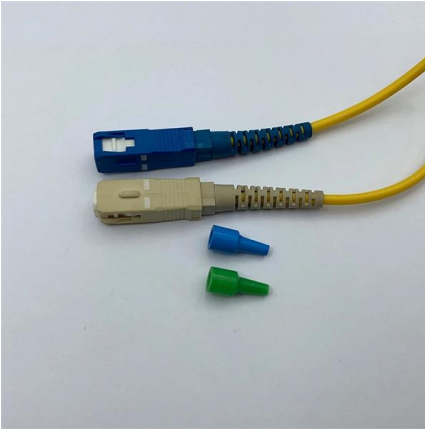
Adam Tas Corridor Energy

How many units away is the switch from the cable management rack





How many units away is the switch from the cable management rack



How many unit Racks reach a default stack cable (50cm) at 9200?

I will install new switches 9200 and the vendor design says: 1st switch (1 UR) 2nd switch. I think there are many space, total 6 unit racks and maybe the cable won't reach both switches.

unsupervised_topic_modeling/topics /en/15/50/100/topics at

Contribute to annontopicmodel/unsupervised_topic_modeling development by creating an account on GitHub.



Network Rack Cable Management: 2026 Standards

Modern network racks face new physical constraints: deeper switches, hotter PoE++ loads, and thicker Cat6A cabling. A standard 48-port



Network rack organisation tips : r/networking

IMO: Every network rack needs good vertical cable management. There will always be some



quantity of cables (the permanent station to patch panel cables for



Tips and Guide for Server Rack Cable Management

Accessories for Cable Management There are some types of server rack cable management accessories: Vertical accessories. This organizer is used

Mastering the Art of Rack Mounting: A Comprehensive

This guide analyzes switch rack solutions' nuances and offers insightful strategies, industry best practices, and practical tips. From selecting the



unsupervised_topic_modeling/topics /en/17/100/100/topics at

Contribute to annontopicmodel/unsupervised_topic_modeling development by creating an account on GitHub.



Horizontal Rack Cable Management: Cable

The following tips will teach you how to create a good horizontal rack cable management strategy that will not only help keep things neat and organized.



Server Rack Cable Management: What Is the Best

Server rack cable management, if not being handled properly, could bring you a succession of problems -- it would result in cable damage and

9 Best Server Rack Cable Management Systems That

Cable management systems come in several types: raceways contain cables in rigid channels, horizontal managers segment connections at specific rack heights,



Server Rack Cable Management Best Practices

This blog aims to discuss server rack cable management best practices, the most frequent mistakes, and how enhanced organization improves



Cable Management

This slack provides room to remove and replace the switch, allows for inadvertent movement of the rack, and helps prevent the cables from being bent to less than the minimum bend radius.



Rackmount cable length calculations & best practices

There is no special tool that I've found for figuring out the length you need. I used pre-made cables on a rack a few months ago and it came out ok; not too messy. I

APPLYING PROPER CABLE MANAGEMENT IN IT RACKS

Typically these cabinets would be configured in a manner using rack mount patch panels and cable managers along with vertically mounted cable managers to provide pathways for patch cords



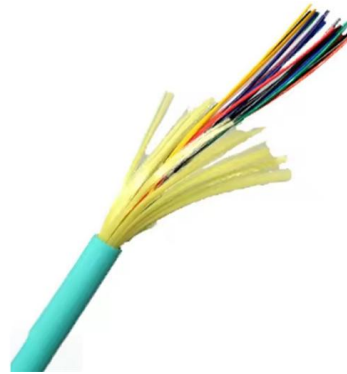


Server rack cable management recommendations :

A 1u cable management above and below the patch panel work but it looks like you don't have the room for two. Without moving things, I'd put one between the patch

HOWTO: Server Cable Management , by Matt Simmons

HOWTO: Server Cable Management Introduction
Happy Friday to you, and welcome to the (semi, almost) weekly how-to. Today, by popular request,

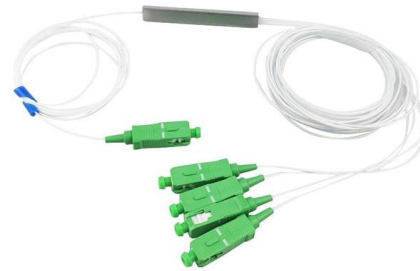


Welcome to Channel Dive , Channel Dive

Add us as a Google Preferred Source to see more of our articles in your search results. Pelicans fly over the Salton Sea at sunrise on July 7, 2011, in

Mastering the Art of Rack Mounting: A Comprehensive

For compatibility purposes, such systems use a uniform width of 19 inches. They are also available in differing sizes defined by the rack unit (U)



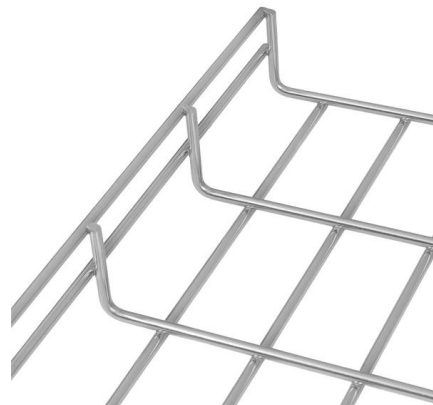
Switches placement in a rack

You'll see it done all sorts of ways in data centers, usually with cable management in mind. We do all the switches in a stack, no space between them with vertical management on the sides.



BEST PRACTICES GUIDE FOR RACK ENCLOSURES

The Dell 2420 and 4220 Rack Enclosures are UL certified and adhere to the CEA-310-E standards for 19" rackmount equipment. Dell PowerEdge servers fit into these racks as do other important



Guidelines for Server Rack Organization

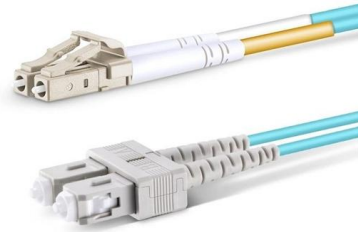
Without an effective rack cable management solution, the cables inside a server rack can quickly turn into a tangled mess, creating significant





Server Rack Cable Management Best Practices

Organizing server racks and managing cables meticulously is crucial for maintaining a tidy, operational, and dependable data center. Disorganized

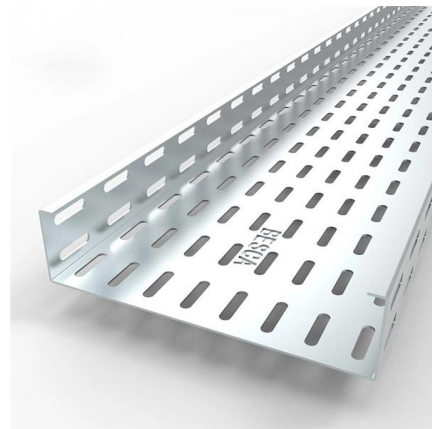


Guidelines for Server Rack Organization

The height of the rack is divided into standardized segments called rack units ("U"), and each rack unit (1U) is 1.75 inches high. For example, a 42U

Server rack cabling best practices

So we just ordered upgrades for all of our switches and firewalls in our main rack in the server room which, to be honest, is a rats nest of cables. I've



Contact Us

For datasheets, pricing, or custom telecom energy solutions, please visit: <https://www.koskolong.co.za>