



Adam Tas Corridor Energy

How much should be reserved within the optical cable station





Overview

In order to ensure the safety of the optical cable, the reserved optical cable should be left in the man (hand) hole of the communication pipeline as much as possible. Here's a practical guide based on international standards to help you design efficient and standards-compliant telecom spaces. This article introduces a comprehensive method for the design and planning of reserved joint boxes, with a particular focus on optimizing the number of optical fibers required.



How much should be reserved within the optical cable station



CODE OF PRACTICE

General Requirements of Cabling Network Systems Separate conduits, ducts, channelling and trunking systems should be separately provided for the electricity power supply cables, telecommunications

ITU-T Rec. L.163 (11/2018) Criteria for optical fibre cable

Protection of the optic fibre cable: The optic fibre cable should be durable enough so that when a road construction machine hits the cable it will not break at the first contact.



The FOA Reference For Fiber Optics

Outside Plant Fiber Optic Cable Jump To: Fiber Optic Cable Construction Fiber Optic Cable Types Cable Design Criteria Choosing Cables Cable Types: (L>R):



News

What are the basic requirements for storage optical cables? As an optical cable manufacturer with 18 years of production and export



experience, GL will tell you the requirements



CMU School of Computer Science

100 100 1000 101 100

Fiber Optical Cable Installation and Construction

In order to ensure the safety of the optical cable, the reserved optical cable should be left in the man (hand) hole of the communication pipeline as



The FOA Reference For Fiber Optics

Removal of cables is much more time consuming than installation, as each cable must be identified and carefully removed to prevent damaging other cables. No





fiber storage are you doing it wrong?

In the early years of fiber optic cable storage, linemen had no reasonable way to store cable other than to simply coil it up on the line and create a "rats nest". This method leaves the cable vulnerable to the



The reserved length of each link in the optical cable line

For crossing rivers, crossing bridges, crossing highways and other special sections, 5-30 meters of optical cables should be reserved at each location; the remaining cables need to be coiled

FOA Standard For Installing Fiber Optic Cable Plants

Support structures for fiber optic cable installations should be completed before the installation of the fiber optic cable itself. Outside plant structures should be installed in conformance with all permits



FOA Standard For Installing Fiber Optic Cable Plants

Thieves often do not know the difference between copper cables which are valuable when sold for scrap and fiber optic cables which are not, so cables and other components should not be left unprotected



Optimizing Telecommunications Spaces : Sizing

Telecommunications spaces are the backbone of structured cabling systems in commercial buildings. Proper sizing and layout are critical for functionality,

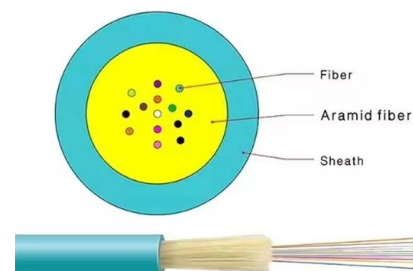


ANSI/TIA/EIA 942 Data Center Design Guidelines and

A minimum of 0.6m (2 feet) of rear clearance shall be provided for service access at the rear of racks and cabinets. A rear clearance of 1m (3 feet) is preferable. Some

Fiber Optic Cable: Storage & Handling Tips

Fiber optic cable can be basically categorized into indoor fiber optic cable and outdoor fiber optic cable. Indoor cables are used exclusively within





Optical Fiber Cable Installation Guideline

1. Recommendations for Fiber Optic Cable Installation 1.1 General recommendations for all installation and storage areas of cable (indoor/outdoor) Where reels are supplied with protective material fitted

Underground Installation of Optic Fiber Cable Placing

Fiber optic cables have provided a more optimal use of available underground conduit space because of its small cable diameter and the much higher communications traffic capacity of each cable. Optical



Staying Within Your Budget: Simplify Your Cable Plant

The equipment's optical receiver is just looking for 'light-on' or 'light-off' to operate, unlike electron based systems where inductance, capacitance and



Calculation of reserved cable length: avoiding waste and ensuring

Smart Cable Management for Modern Installations Hey there! If you're tackling a cable installation project - whether for an office renovation, industrial setup, or even solar panels (oops, you

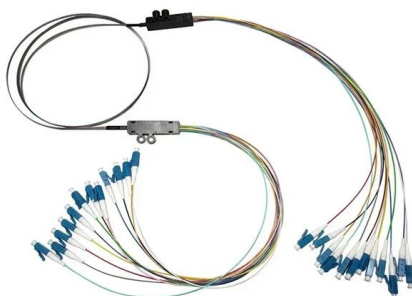
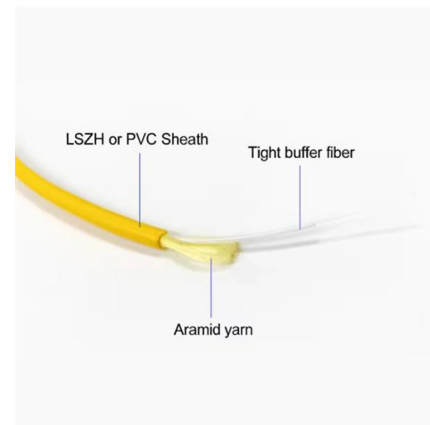


ITU-T Rec. L.163 (11/2018) Criteria for optical fibre cable

Summary Recommendation ITU-T L.163 describes criteria for the installation of optical fibre cables defined in Recommendation ITU-T L.110 in remote areas with lack of usual infrastructure for

TR-3552: Optical network installation guide

This chapter focuses on the testing, verification, and documentation of optical fiber cabling systems for new installation and system upgrades, with special emphasis on multimode fiber cabling for SANs.



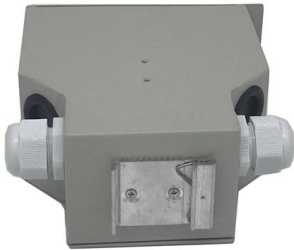
Fiber Optical Cable Installation and Construction

The optical cable crossing the river is left on the adjacent pole of the first pole on the riverbank: the joint should be left on the joint pole, and each joint



cs-178-project/imdb.vocab at main · apmalani/cs-178-project

Contribute to apmalani/cs-178-project development by creating an account on GitHub.

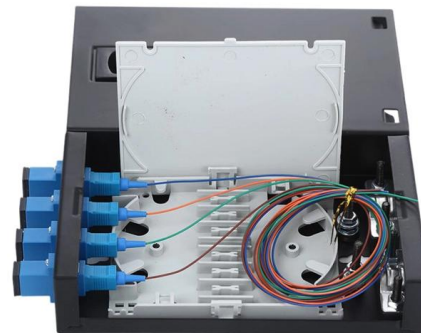


OPTICAL FIBRE CABLE APPLICATIONS GUIDELINES

However, no single optical cable design is universally superior in all applications. In general, optical fibre cables installed in an outdoor environment are exposed to more severe mechanical and

FOA Standard Cable Plants FOA-6a

©2025, The Fiber Optic Association, Inc. FOA Standard Cable Plants FOA-6a.docx 1/12/25 1



General Optical Fiber Cable Installation Considerations

General Optical Fiber Cable Installation Considerations Some key considerations for installing optical fiber cable are highlighted below. Failure to follow these guidelines may result in damage or



STS 1000 Wiring Guidelines

Note: Horizontal cables do not include work area (patch) cables or equipment room (patch) cables. However, the length and type of cable required for connecting telecommunications equipment to the



Reserved joint box for indoor optical cables and planning method for

This article introduces a comprehensive method for the design and planning of reserved joint boxes, with a particular focus on optimizing the number of optical fibers required.

Containment Planning & Design - Royce Communications

We aim for a 40% fill rate. Maximum cable run lengths and allowances for bend radius can impact containment design. If planned upfront, based on demand, this





Cable Fill Ratios and Sizing Guide , PDF , Optical Fiber

This document provides sizing guidelines for cable containment, power separation, and optical fiber for cabling installations. It includes cable fill ratios for

Contact Us

For datasheets, pricing, or custom telecom energy solutions, please visit:
<https://www.koskolong.co.za>