



Adam Tas Corridor Energy

How much signal attenuation does a 1-to-2 optical splitter cause





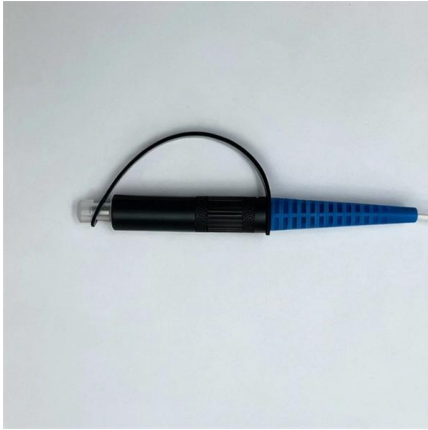
Overview

Optical signals lose power (attenuation) as they travel through fiber—typically 0. A higher split ratio means each output port gets less initial power, limiting how far the signal can travel: How to Calculate Split Ratio and Insertion Loss?

The equation below can be used to estimate the split ratio and insertion loss for a typical split port. $SR = P_i / P_t \times 100\%$ $IL = -10 \times \log (SR/100) + \Gamma_e$ where IL = splitter insertion loss for the split port, dB P_i = optical output power for single split port. in Watts - W), the loss value in dB is calculated by the formula: $Loss (dB) = 10 \lg (mW_1 / mW_2)$ When both gains. An optical splitter, also known as an optical splitter, is a passive component used in PON (Passive Optical Network) networks such as FTTH networks.



How much signal attenuation does a 1-to-2 optical splitter cause



Split Ratios and Splitting Level of Optical Splitters

The most common splitters deployed in a PON system is a uniform power splitter with a 1:N or 2:N splitter ratio, where N is the number of output

The Fiber Optic Association

Optical splitters introduce a large attenuation, a 1:2 splitter introduces as much attenuation as an optical fiber about 10 km long (>3dB). The existence of an optical splitter on the display of OTDR shows as a



The Ultimate Guide to Optical Signal Attenuation

Introduction Optical signal attenuation is a fundamental limitation in optical communication systems, affecting the quality and reliability of data transmission. As the demand for



Fiber-Optic Cable Signal Loss, Attenuation, and Dispersion , Juniper

Attenuation and Dispersion in Fiber-Optic Cable



Correct functioning of an optical data link depends on modulated light reaching the receiver with enough power to be demodulated correctly. Attenuation is



Why Fiber Optic Splitter Loss Table is Important

Signal loss within a system is expressed using the decibel (dB) which is a measure of signal power attenuation. When you get the fiber splitter, the primary important



Passive Optical Network (PON): Attenuation and

In the PON (Passive Optical Network) system, calculating optical attenuation and transmission distance can be a tricky thing to deploy FTTH.



Passive Splitter Loss -- How Much dB Per Split , TTI Fiber

A significant loss from a passive splitter reduces how far the signal can travel after the splitter, or limits how many other lossy components (like connectors) can be in the path.



Your Go-to Guide to Optical Splitter

The optical splitter is an optical power distribution device that splits one optical signal into multiple optical fiber signals to achieve multichannel transmission.

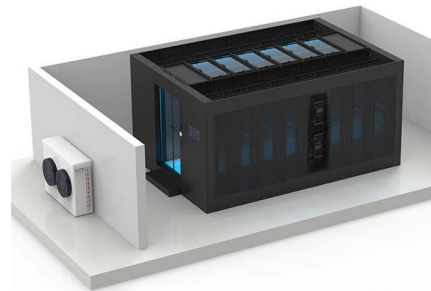


How to Calculate Splitter Loss in Optical Fiber

A splitter of 1x64 will result in more loss compared to an 1x2 because the signal power is divided among more outputs. Wavelength: Splitters are most effective at specific

Understanding Optical Splitter Loss

Insertion loss tells you how much weaker the signal becomes after passing through the splitter. Let's say you have a laser output at 0 dBm (which is



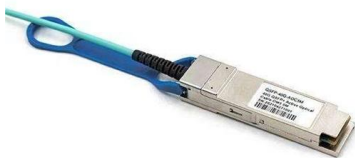
Understanding The Split Ratios And Splitting Level Of Optical Splitters

There are a multitude of split ratios available. The most common splitters deployed in a PON system is a uniform power splitter with a 1:N or 2:N splitter ratio, where N is the number of output ports. The



How to Control Splicing Loss in Fusion Splicing for

Control splicing loss in fusion splicing by optimizing alignment, cleaving, and cleaning for reliable, low-loss fiber optic network connections.



WORLD WIDE WEB JOURNAL Home

O'Reilly & Associates, Inc. 103A Morris St.
Sebastopol, CA United States

yingdapc

Hier sollte eine Beschreibung angezeigt werden, diese Seite lässt dies jedoch nicht zu.





Tutorial of Optical Splitter Loss Test

Optical splitters are usually used in passive optical networks (PONs) to distribute fiber to individual homes or businesses. There is something different

Optical Signal Attenuation and Dispersion , Springer Nature Link

When information signals travel in any type of transmission medium, various signal power losses and signal fidelity distortions are always present. Attenuation of a light signal as it propagates



Fiber Optic Attenuation Calculator , Fiberopticx

1. Attenuation Coefficient (dB/km): This value represents the inherent signal loss per kilometer of fiber optic cable. It depends on the cable type (e.g., multi-mode, single-mode) and the wavelength of light

Comprehensive Guide to Optical Splitters

An optical splitter is a crucial passive fiber optic device that splits and combines optical signals. It can distribute the optical energy transmitted through a



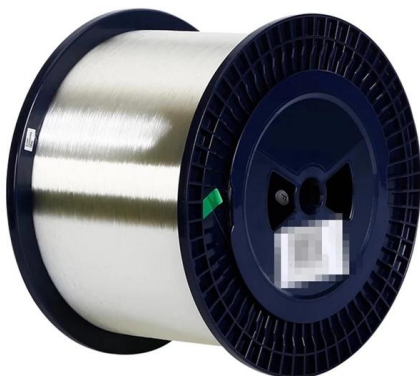
Optical Splitter

Optical Splitter The Optical Splitters may be used in applications that require the STM-1 (SDH) optical signal input to be simultaneously connected to an active link, while at the same time connecting it to



splitter loss in optical fiber on Strikingly

Splitter loss is the loss of optical power that occurs when a single light signal is divided into multiple signals using an optical splitter. This loss is an inherent consequence of splitting light, as dividing a



PON crib: splitters, ratios, gains, losses

A very frequent question is how the splitter ratio in an optical splitter relates to the actual signal gain. In other words, how much attenuation a splitter



Basic Knowledge about Split Ratio and Insertion Loss of

Optical splitters play a crucial role in Fiber to the Home (FTTH) Passive Optical Network (PON) systems, efficiently distributing a single optical



Pre-Terminated Patch Panel

- Multi-application support
- Flexible configuration
- Modular design



Multi-functional Sliding Patch Box, Modular



Modular Sliding Patch Box



Sliding Patch Box, Modular

Why Fiber Optic Splitter Loss Table Is So Important?

The optical fiber splitter is the component with the largest attenuation in a PON system. The optical insertion loss is the loss of an optical signal

Optical Splitters: Split Ratios, Splitting Architectures & PON Network

Choosing the right split ratio depends on three interrelated factors: distance, bandwidth demand, and cost. Optical signals lose power (attenuation) as they travel through fiber--typically



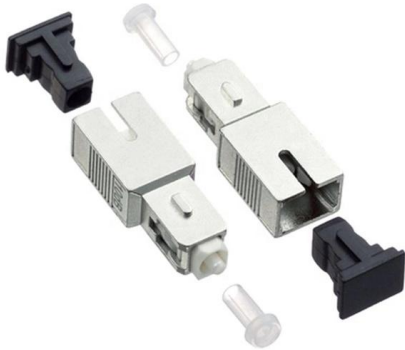
Basic Knowledge about Split Ratio and Insertion Loss of Optical Splitter

Optical splitters are vital in FTTH PON systems, distributing a single signal efficiently. Key parameters, Split Ratio and Insertion Loss, define their performance. A fundamental understanding of



Basic Understanding of Optical splitters

Splitters can be supplied in many package sizes, from the size of a fusion splice using 250-micron fibre, to large rugged packages using 2 or 3mm fibre with connectors fitted.



Optical Splitter

The minimum power signal on the "tapped" optical output port must be at least -38dBm to ensure the satisfactory working of the STM-1 Groomer. The Monitoring

Optical Splitter Insertion Loss Table

The document contains tables listing the insertion loss in dBm for various splitting ratios of an optical splitter, ranging from 1% to 99%. It also includes formulas for



How much does an optical splitter attenuate in FTTH networks?

However, this splitting inherently introduces attenuation, or power loss, to the optical signal. Understanding how much loss splitters introduce is crucial for designing and deploying



Contact Us

For datasheets, pricing, or custom telecom energy solutions, please visit:
<https://www.koskolong.co.za>