



Adam Tas Corridor Energy

How to adjust a Sick digital fiber optic sensor





Overview

The WLL80 can be set easily and directly on the sensor thanks to its sharp OLED display. How do I reset the SICK WLL180T sensor to its factory settings?

Press the Mode key for 2 seconds to enter "Configuring" mode. Find the right solution for your individual needs: At SICK, you can configure the cable length, cable material and sensor head to suit your requirements. Configure now Attachment lenses are used for various purposes: They can reduce the aperture angle to achieve a greater scanning range and reduce. Described product WLL80 Standalone variant Bus variant (base / expansion units) Manufacturer SICK AG Erwin-Sick-Str. How to Adjust Sick Sensor Sensitivity #sick #sensor #gte6 #sensitivity #electrical #wiringdiagramSick gte6How to adjust sensitivityAdjust sensitivity Sick se. Very low installation space required, flexible use in the smallest of corners, the right functionality for standard and special requirements and versatile application possibilities – this is what fiber-optic sensors from SICK stand for. The photoelectric sensor for fiber-optic cables WLL180T with the SICK fiber-optic cables of the LL3 series is especially suited to detecting very small objects, objects in front of interfering backgrounds, and transparent and moving objects.



How to adjust a Sick digital fiber optic sensor



Fiber-optic Sensors: Flexibility, Functionality, Versatility

With both the GLL170 variant with potentiometer and the GLL170T teach-in version with digital display, the user can flexibly adjust the sensor

Fiber-optic sensors

Fiber-optic sensors can be implemented in an extremely space-saving manner due to the separation of the sensor head and evaluation unit. In addition, amplifiers

Pre-Terminated Patch Panel

- Standard 19" width
- Max 144 fibers in 1U
- MPO/Fusion Dual-Purpose



Removable Cable Management Tray



Transparent Front Cover



High-Quality Matte Coated Steel



faker/internet.go at master · pioz/faker · GitHub

Random fake data and struct generator for Go. Contribute to pioz/faker development by creating an account on GitHub.

Keyence Digital Fiber Optic Sensor (FS-N11CN) Setup

Introduction This guideline explains how to setup and mount the Keyence Digital Fiber Optic



Sensor (FS-N11CN). Tool List No tools are necessary to setup the Keyence Digital Fiber Optic



Photoelectric sensor WLL180T Manual , Manualzz

How can I adjust the response time of the WLL180T sensor? You can select from five response time settings: High-precision (LonG), Standard (Stdnd), Fastest (FASt), High speed (HiGh), and Super long

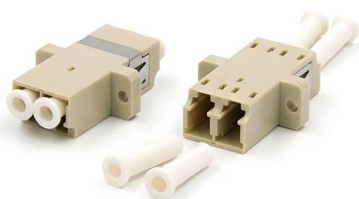
WLL180T Sensor Teach-in Manual , PDF , Optical Fiber

This document provides instructions for configuring the settings of the WLL180T photoelectric sensor for fiber-optic cables for individual applications. The sensor



Sick Fiber Optic Sensor ,Fiber Optic Cable & Optical

Sick Fiber Optic Sensors: GLL170 Series Response Time: Rapid, at 50 μs. Adjustment: Switching threshold via potentiometer or teach-in via





Commissioning. SICK WLL80 Analog Fiber-optic sensor

View online or download PDF (2 MB) SICK WLL80 Analog Fiber-optic sensor Operating instructions & bull; WLL80 Analog Fiber-optic sensor measuring, testing & control PDF manual download



SICK User Manuals Download , ManualsLib

View & download of more than 3637 SICK PDF user manuals, service manuals, operating guides. Accessories, Security Sensors user manuals, operating guides & specifications

INTELLIGENT DIGITAL FIBER OPTICAL SENSOR

Dial the lock lever to the vertical position, at this point the optical fiber has been fastened, remove the optical fiber and dial the lock lever to the horizontal



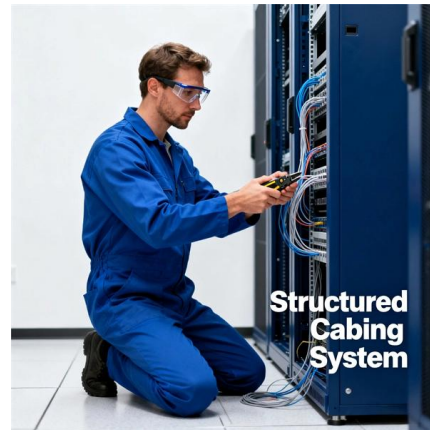
ITPro Today, Network Computing, IoT World Today combine

ITPro Today, Network Computing and IoT World Today have combined with TechTarget . The page you are looking for may no longer exist.



Fiber-optic sensors

Fiber-optic sensors at a glance The combination for efficiency and precision in demanding detection tasks SICK's comprehensive portfolio offers everything you need for high-performance and reliable



WLL80

Proximity fiber: When using the WLL80 fiber-optic sensor with a proximity fiber, align the fiber to the object. Select the position so that the infrared light (non-visible) hits the center of the object.

SICK

Services Training Stay tuned SICK Sensor Connection Blog Newsroom Job Opportunities Contact us





SICK Fiber-optic sensors WLL180 series

Discover the SICK WLL180 series fiber-optic sensors, featuring an ultra-fast response time of 16 ms and exceptional sensing range. Designed for reliability in challenging environments, these sensors excel

Fiber-optic sensors

When installation space is extremely limited or the objects to be detected are tiny, fiber-optic sensors are the ideal solution. If it is necessary for even higher



How to Adjust Sick Sensor Sensitivity

Subscribed 39 4.5K views 1 year ago How to Adjust Sick Sensor Sensitivity #sick #sensor #gte6 #sensitivity #electrical #wiringdiagram more

WLL80

The WLL80 can be set easily and directly on the sensor thanks to its sharp OLED display. The menu offers intuitive operation using the pushbutton located on the side of the display.



SICK WLL180T-X632 OPERATING INSTRUCTIONS

View and Download SICK WLL180T-x632 operating instructions manual online. Fiber optic sensor. WLL180T-x632 security sensors pdf manual download. Also for:



Sick WLL80 Fiber-optic sensor Operating instructions

Hello! I am an AI chatbot specifically trained to assist you with the SICK WLL80 Fiber-optic sensor Operating instructions. I have thoroughly reviewed the document and can help you locate the exact



WLL80 Fiber Optic Sensor , SICK

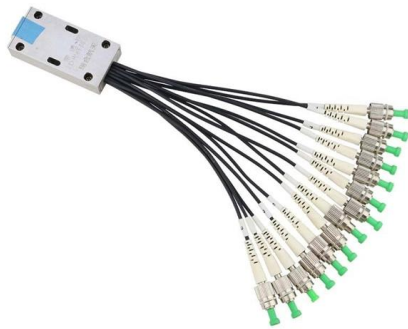
SICK has created a new generation of amplifiers for the flexible integration of fiber optics in confined spaces. The intelligent WLL80 features IO-Link and can make





How to Adjust

How to Adjust - Set up Keyence Fibre Optic Teach Sensor on JDA Filling & Capping Machines For sales inquiries or questions about our machinery please contact our office.



Detection sensors

Discover our Fiber-optic sensors. When installation space is extremely limited or the objects to be detected are tiny, fiber-optic sensors are the ideal solution. If it is necessary for even higher

Fiber-optic cables

Together with the right fiber optic amplifier, optical fiber cables are crucial for mastering complex detection tasks in automation technology. Optical fiber cables



FIBER-OPTIC SENSORS

Fiber-optic sensors stand out for their compact design, exceptional resistance to mechanical, chemical, and thermal stress, and their ver-satile application across diverse environments.



Detection sensors

When installation space is extremely limited or the objects to be detected are tiny, fiber-optic sensors are the ideal solution.



SICK WLL180T MANUAL Pdf Download , ManualsLib

The 2-point Teach-in function on the SICK WLL180T sensor allows for exact adjustment of the switching threshold based on both the object and ambient

Operation. SICK WLL80 Analog Fiber-optic sensor

View online or download PDF (2 MB) SICK WLL80 Analog Fiber-optic sensor Operating instructions & bull; WLL80 Analog Fiber-optic sensor measuring, testing & control PDF manual download



SICK Fiber Optic Sensors , SICK fiber optic sensors India , Eone

The combination of fiber-optic sensor and fibers is an excellent solution for a wide range of applications. Challenging detection tasks can be solved in combination with the matching fibers thanks to the



Contact Us

For datasheets, pricing, or custom telecom energy solutions, please visit:
<https://www.koskolong.co.za>