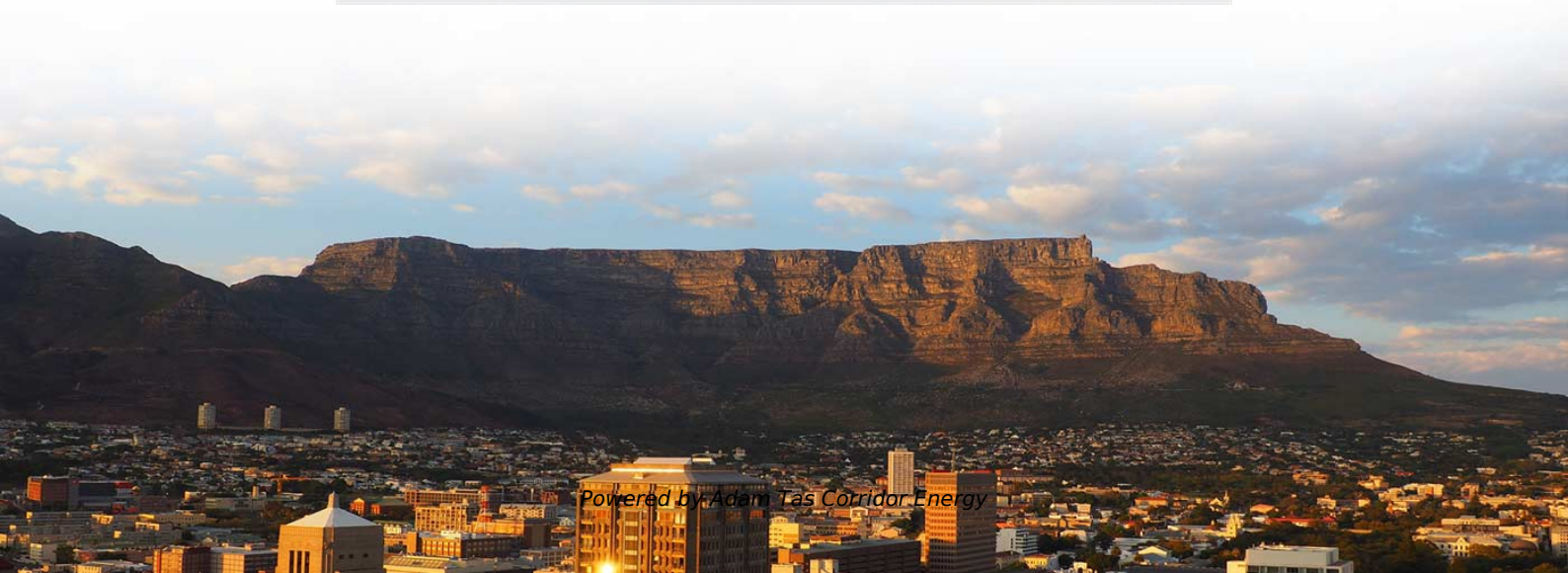




Adam Tas Corridor Energy

How to calculate the number of beam splitters





Overview

Beam splitters are sometimes used to recombine beams of light, as in a Mach-Zehnder interferometer. It is a crucial part of many optical experimental and measurement systems, such as In its most common form, a cube, a beam splitter is made from two triangular glass which are glued together at their base using polyester,, or urethane-based adhesives.



How to calculate the number of beam splitters

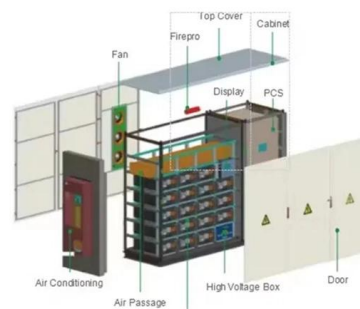
Fundamental properties of beam splitters in classical and quantum optics



In the present section, we begin by extending Feynman's argument to the problem of n identical photons in a number state, $|n\rangle$, that, upon arriving at a beam splitter, split into two groups of m and $n-m$ photons.

Lecture9: The lossless beam splitter

probabilities add themselves up. In case of a symmetric beam splitter, we can visualise the possible paths that the two photons can take (see Fig. 14). The two photons, here labelled in green and red



Beam Splitters -- Abridged Guide

Quick-reference guide for beam splitters -- key equations, type comparison tables, Fresnel reflectance, polarizing designs, and a practical selection workflow. Condensed from the comprehensive guide.

Beam Splitter

A beam splitter is defined as an optical device that effects a linear transformation of fields presented at two input ports, producing output



beams that are related to the input fields in a characteristic manner



Understanding Fiber Optic Splitters: Principles,

Understanding Fiber Optic Splitters: Principles, Parameters, Types, Applications, and Future Trends 1. Introduction Fiber optic splitters are integral components in the



Beam Splitter

Within the interferometer, a beam-splitter directs one beam of light down a reference path, which has a number of optical elements including an ideally flat and smooth mirror from which the light is



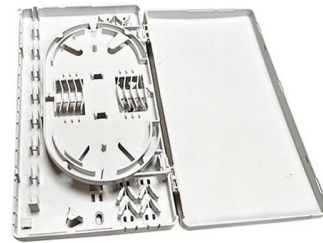
quantum mechanics

My question is, how can we frame the problem so that the input could be entered as a vector/matrix and the output (e.g. as a vector to show the coefficients of each possible photon



Fundamental properties of beamsplitters in classical and

A lossless beam-splitter has certain (complex-valued) probability amplitudes for sending an incoming photon in to one of two possible directions.



How Beamsplitters Work: Types, Mechanisms, and

This article explains the working principles of beamsplitters, detailing how they divide a beam of light into two separate paths, the different types of

Introduction: Fundamental Principles of Quantum Random Number

This introduction describes one of the most important elements for the generation of quantum mechanical random numbers--the beam splitter (BS). A BS is a passive element to split



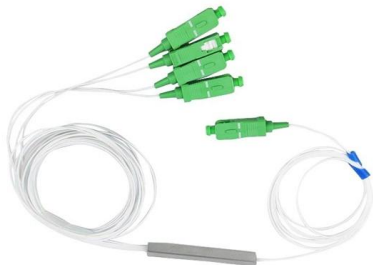
DTS0095

Broadband beam splitters are offered, but with greater variation in the split ratio with respect to input polarization. Splitters that only split off a small portion of the input light are commonly known as taps.



Diffractive Beam Splitter Optical Calculator

Beam splitter in diffractive optics: beam splitter / pattern generator for many applications such as Laser scribing in solar cells or panels .



How Does a Beam Splitter Work?

A beam splitter is an optical device that divides a single incoming beam of light into two or more separate beams. Its fundamental purpose is to precisely control the path and intensity of light,

Optical Beam Splitters: Examination of Designs and Applications in

Explore the essential role of optical beam splitters in various fields, including telecommunications, laser systems, and medical devices. Learn about different types of beam splitters, such as plate, cube, and





Pulse Simulation Generation

Result: FMM Analysis of Second Beam Splitter d c diffraction efficiencies calculated by FMM in order to calculate the diffraction efficiencies for the high-NA beam splitter without paraxial approximation a

How to Calculate Splitter Loss in Optical Fiber

Calculating splitter loss in optical fibers is essential for designing efficient optical networks. Understanding the types of splitters, their impact on network performance, and how to measure their

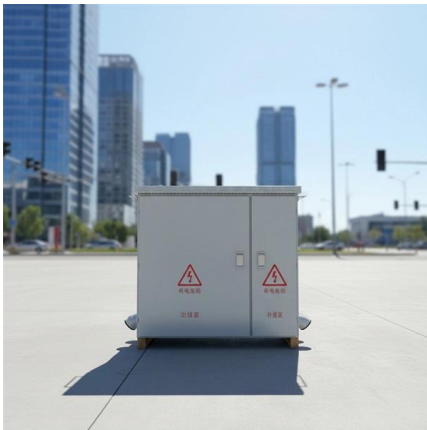


How to model a beam splitter in Sequential Mode - Ansys Optics

This article also discusses how to calculate the total power in both transmitted and reflected beams, accounting for polarization effects and thin-film coatings.

Parameters of Beam Splitter

Article introduces the meaning of the basic parameters of beam splitter. Beam splitter at specific angles, creating arrayed beams, spot size on



Beam splitter , Description, Example & Application

A beam splitter is an optical device that splits a single beam of light into two or more beams. It is commonly used in scientific and industrial applications.

Beam Splitters: Explained

Beam splitters are a fundamental element in optical systems. Beam splitters are, in essence, optical components used to divide a single light source



Diffraction Beam Splitter Optical Calculator

The output focal spots have the same characteristics of the input beam. In order to calculate your smallest spot size, please refer to the Diffraction Limit Calculator.





Beam Splitter Input-Output Relations

The elements of the beam splitter transformation matrix B are determined using the assumption that the beamsplitter is lossless. While a beamsplitter is never lossless, it is a good approximation for most



Beam Splitters in Quantum Optics

Discover the role of beam splitters in quantum optics, their types, and applications in various quantum systems.

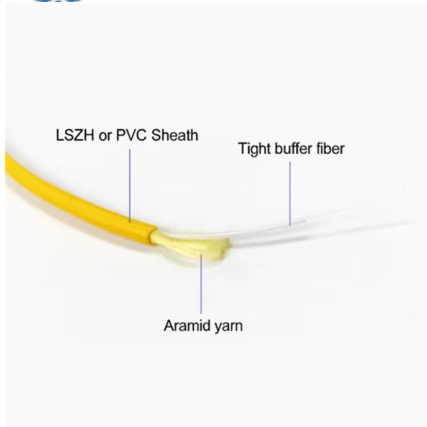
What are Beamsplitters?

Beamsplitters are optical components used to split incident light at a designated ratio into two separate beams. Additionally, beamsplitters can be used in reverse to



Glossary for RESULT Software and Antaris Systems

C Calculate event A workflow event in RESULT Integration that instructs the software to calculate statistics using the results from a specified measure event and the specified settings for the



Do You Know How to Place and Use the Optical Splitter?

In the realm of optical communication networks, the optical splitter serves a vital role in dividing and distributing optical signals efficiently. Understanding how to properly place and use an



How does a beam splitter work? Common types and use cases

Understanding Beam Splitters Beam splitters are essential optical components used to divide a beam of light into two or more separate beams. They play a crucial role in various scientific,

Fundamental properties of beamsplitters in classical and quantum optics

The behavior of a beamsplitter becomes much more complex (and far more interesting) in the quantum regime, where a multi-photon packet $\delta x; k_1; \hat{e}^P$ in the number-state $j n_1 i$ arrives at





Coherent states, beam splitters and photons

Classically, a 50/50 beamsplitter splits the intensity of an incoming beam in two. Quantum-mechanically, it will not split each photon in two, but it will transmit or reflect each photon with 50% probability (see

Contact Us

For datasheets, pricing, or custom telecom energy solutions, please visit:
<https://www.koskolong.co.za>