



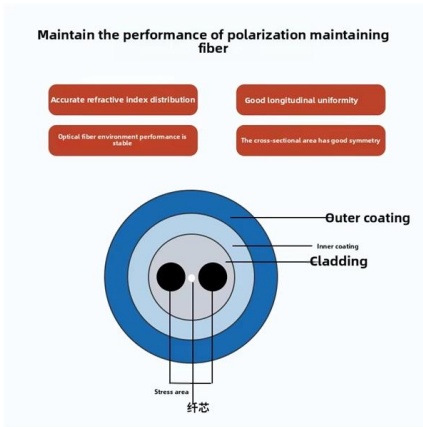
Adam Tas Corridor Energy

How to check an empty beam splitter





How to check an empty beam splitter

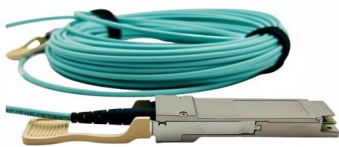


Transmission and Reflection by Beamsplitters

In addition to the task of dividing light, beamsplitters can be employed to recombine two separate light beams or images into a single path. This interactive tutorial

Parameters of Beam Splitter

Article introduces the meaning of the basic parameters of beam splitter. Beam splitter at specific angles, creating arrayed beams, spot size on



What are Beamsplitters?

Beamsplitters are optical components used to split incident light at a designated ratio into two separate beams. Additionally, beamsplitters can be used in reverse to

How Does a Beam Splitter Work?

A beam splitter is an optical device that divides a single incoming beam of light into two or more separate beams. Its fundamental purpose is to



precisely control the path and intensity of light,

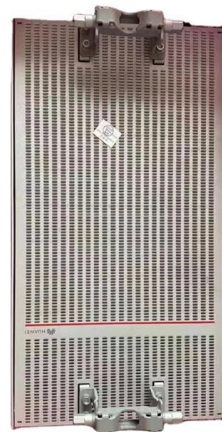


Beam splitter , Description, Example & Application

A beam splitter is an optical device that splits a single beam of light into two or more beams. It is commonly used in scientific and industrial applications.

Understanding Beamsplitters: Types, Principles, and

This article explores the fundamental principles and diverse applications of beamsplitters, detailing their different types and uses in fields such as optics



Beamsplitters Product Overview

To illustrate the effect of a non-planar beam splitter, we consider the reflection of a laser from a curved (A) or flat (B) beam splitter and the image produced on the



How to Calibrate the Beam Splitter on a Finetech System

Align the outer lines of scales in both x and y axes. Ensure that line #6 of A is between lines 10 & 11 of B. If not repeat When finished, only outside lines of both scales should directly overlap (they are

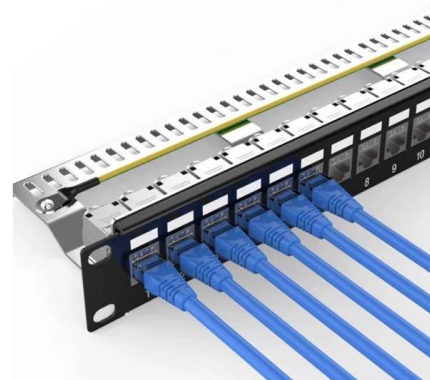


Beam Splitter

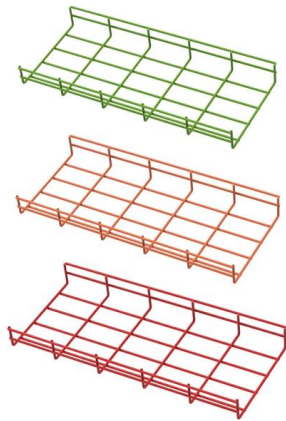
The beam splitter can be a half-silvered mirror set at an angle of 45 degrees to the incoming beam (see Fig. 4.3), where the coefficient of reflection is so adjusted that the reflected and transmitted beams

What are Beamsplitters?

Beamsplitter Construction , Types of Beamsplitters Beamsplitters are optical components used to split incident light at a designated ratio into two separate



Beam splitter



A beam splitter or beamsplitter is an optical device that splits a beam of light into a transmitted and a reflected beam. It is a crucial part of many optical experimental

Beam Splitter 101

If your beam splitter is polarized, it will be taking unpolarized lighting and splitting it into two orthogonally polarized beams. This basically means that it's splitting it



Beam Splitting

Beam splitting is defined as the process of dividing an incident light beam into two or more separate beams, which can be achieved through various structures, including metasurfaces that utilize phase

beam splitter help please (novice question) : r/Optics

For objects a reasonable distance away, this is small and can be easily corrected. If you are shooting at close-in objects pointing two cameras, and fixing the resulting image warping digitally is also an



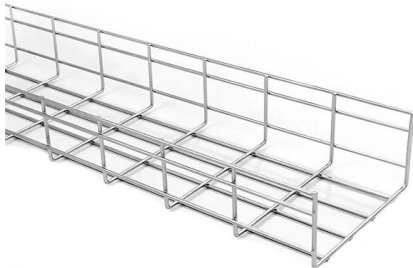


OPTICS LAB , DICHOIC MIRROR/BEAM SPLITTER:

Optics Lab 101: A quickie beam splitter lab tip! Dunno why I said the same thing twice couple of times. Must've been a glitch in the matrix more

What Are Optical Beamsplitters? , Plate, Cube & Dichroic Types

In Summary Optical beam splitters are versatile devices, typically made of glass, used in separating or combining light beams. These optical components play a major role in the science and tech industry.



What is a Beam Splitter, and What are Its Functions and

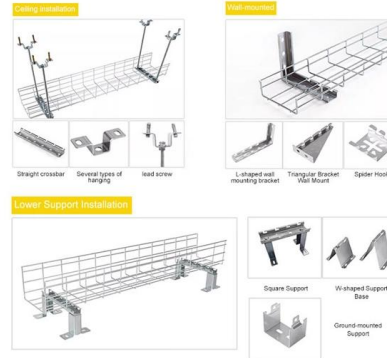
In the intricate realm of optics, a beam splitter stands as a fundamental and versatile optical component. It plays a pivotal role in

Beamsplitter Guide

Beamsplitter Guide Beamsplitter Overview
Beamsplitters separate incident light into two or more beams of the same wavelength. These exiting beams are differentiated by either their optical



INSTALLATION METHOD

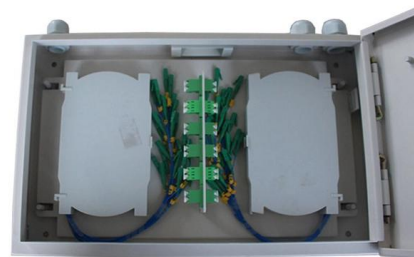


Beam Splitters - optical power splitter, beamsplitter, thin

Beam splitters are devices for splitting a laser beam into two or more beams. There are different types, including polarizing and non-polarizing versions.

Quantum Beam Splitter Schematic Interpretation

I am genuinely confused on how to exactly interpret this element for a beam splitter. This diagram was taken from (https://amowiki.odl.mit.edu/index.php/Single_photons) for reference.



How to Select the Perfect Beam Splitter for Your Optical Setup

The amount of reflected and transmitted light depends on the beam splitter's design and coating. This allows you to control the light distribution in your optical setup. Types of Beam Splitters:



Beamsplitter Mirror

Beamsplitter mirrors, also known as transparent mirrors or "beam splitter" mirrors, have an optical grade dielectric coating on the face of the



Split Beam Spectrophotometers

To understand split beam spectrophotometers, we need to start with the basics. A spectrophotometer is an instrument that measures the amount of light absorbed by a sample. The core principle involves

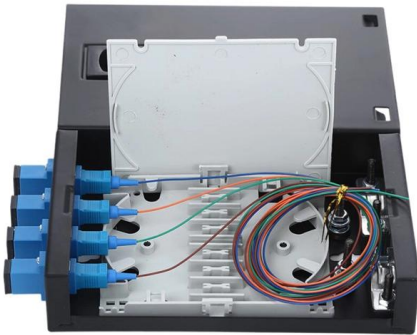
Photonics 101

As the name suggests, a beam splitter refers to an optical device which is used to split or divide a beam of light into two. A beam splitter is usually the cornerstone of most interferometers.



Beam Splitter

A beam splitter is defined as an optical device that effects a linear transformation of fields presented at two input ports, producing output beams that are related to the input fields in a characteristic manner



Infrared Spectroscopy: Beam Splitters and Detector Physics Explained

Infrared spectroscopy sits at the heart of identifying and studying molecular structures, but honestly, its precision hinges on how well the instrument manages light. Two components really



Covering the Basics of Beamsplitters -- Firebird Optics

Polarizing Beamsplitter While standard non-polarizing beamsplitters divide light by wavelength, a polarizing beamsplitter will split the incident beam

Physics:Beam splitter

A beam splitter or beamsplitter is an optical device that splits a beam of light into a transmitted and a reflected beam. It is a crucial part of many optical experimental and measurement

An Extensive Library of Self-Developed Products





beamsplitters selection guide

Experimentation with laser (Linear polarized light) Lasers are used to evaluate our half mirrors and with the polarization properties of the laser, we are able to check the change of light splitting ratios.

Contact Us

For datasheets, pricing, or custom telecom energy solutions, please visit:
<https://www.koskolong.co.za>