



Adam Tas Corridor Energy

How to check the splitter terminals



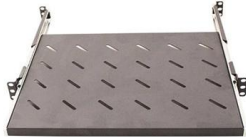


Overview

Attach a launch reference cable to the test source of the proper wavelength (some splitters are wavelength dependent), calibrate the output of the launch cable with the meter to set the 0dB reference, attach to the source launch to the splitter, attach a receive launch. Every CATV or MATV distribution system contains splitters, taps, directional couplers and other passive components. These components may develop excessive signal attenuation and losses, or poor isolation between inputs and outputs. The term time domain indicates that we are looking down the cable and regular intervals to see the sources of crosstalk.



How to check the splitter terminals



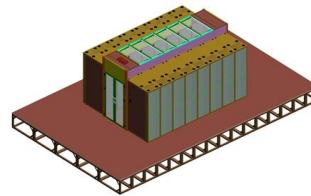
Webit Cabling

Comprehensive Introduction of Fiber Optic Splitter

Fiber optic splitter is significant in helping users maximize the performance of optical network circuits. This article will help you to gain more

troubleshooting cable splitters , Information by Electrical

Testing by simple substitution is easier than testing with an ohmmeter or continuity tester. Some splitters will show an open or a short between input and output terminals, some splitters



Is there a way to detect a splitter on your COAX line?

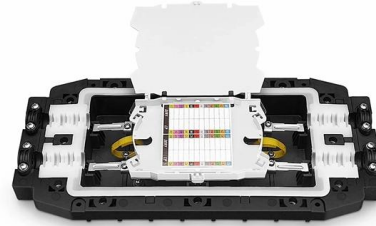
You could set up the modem/router & a laptop at the beginning of the coax line (coming into the house, or whatever), log into the cable modem admin interface, and note the downstream signal/power

Testing Splitter's & Directional Couplers

Testing Splitters, Taps & Directional Couplers
Every CATV or MATV distribution system contains



splitters, taps, directional couplers and other passive components. These components may develop



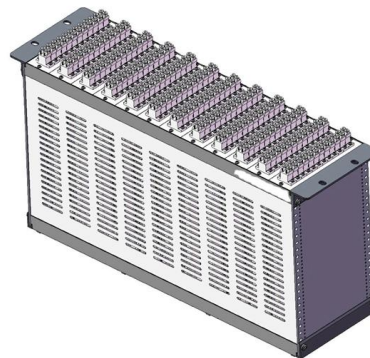
How do You Use a Y Splitter? A Step-by-Step Guide

If you're looking to connect multiple devices to a single port, a Y splitter can be a handy tool. Whether it,Äs for audio, video, or data connections, understanding how to properly use a Y



Ethernet Split Pair Error Detection - CableIQ

Know about network cable split pair error, detection and testing. Use Fluke CableIQ tester for quick detection of network cable split pair such as in Cat5.



Precision Installation Guide For Recessed Ukk Splitter Boxes

Optimizing Rail Layout and Terminal Density
Effective heat dissipation starts with the correct placement of din rail power distribution terminal blocks. Because recessed boxes have limited airflow



KLEIN TOOLS 69400 INSTRUCTION MANUAL Pdf Download

1. Plug the Line Splitter into a standard 120V AC grounded receptacle. 2. Plug the load's power cord into the Line Splitter (Optional). 3. Insert the multimeter leads into the Line Splitter terminals marked



Split Second: Mastering the Art of Testing Cable Splitters

Check the splitter for any signs of physical damage, such as: Cracks or broken components: Inspect the splitter's housing and internal components for any signs of damage.

Troubleshooting Common Issues with Ethernet Splitters

Check the specifications of your ethernet splitter to ensure it is suitable for your needs. If you need to split the signal across many devices,



How To Test A Cable Splitter

Before testing the splitter, ensure that all devices that are connected to it are turned off and disconnected. This can help determine if the splitter is the source of the problem or if it's a



3 Common Coax Splitter Problems Explained

Coax Splitter Problems FAQ What are the symptoms of a bad coax splitter? When your coax splitter is going bad, you will notice a problem with the



Universal Power Supply 3V~24V 3A 72W Adjustable

Universal Power Supply 3V~24V 3A 72W Adjustable Variable 3V 5V 9V 12V 18V 20V 24V AC/DC Adapter Charger, 100V-240V AC to DC Converter with 14 Tips,

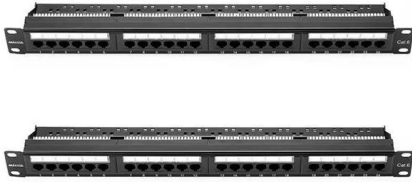
Troubleshooting Common HDMI Splitter Problems

Wireless splitters can be used to connect one device to multiple televisions in different rooms. They aren't difficult to set up, but sometimes the



Split the Signal: A Comprehensive Guide to Setting Up Your HDMI

Active HDMI splitters have built-in amplifiers that can boost the signal and extend the cable distance, while passive splitters do not have amplifiers and may not be suitable for longer cable



troubleshooting cable splitters , Information by Electrical

is it possible to troubleshoot a cable splitter for problems? what about test the signal? Testing by simple substitution is easier than testing with an ohmmeter or continuity tester. Some



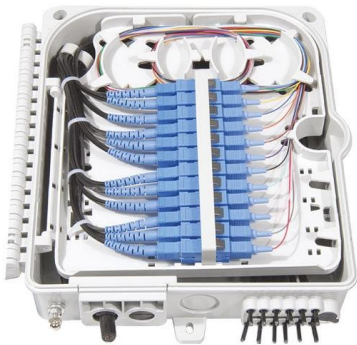
Fiber Optic Splitter: How It Works & Types Guide

This guide demystifies fiber optic splitters, explaining their design, operating principles, types, key specifications, and real-world applications.

How do I test if a PoE splitter is functioning correctly?

By following these troubleshooting steps, you can identify and resolve issues with a PoE splitter, ensuring your devices receive reliable power and data connectivity.





How to check a flat splitter cable pins

Test to make sure you are using a 2x3 crossover cable when trying to program a TCP Splitter card for E4500

Wiring Diagram for DSL POTS Splitter

Each device is connected to the corresponding terminal on the splitter using separate wires. It is essential to follow the wiring diagram accurately to ensure proper



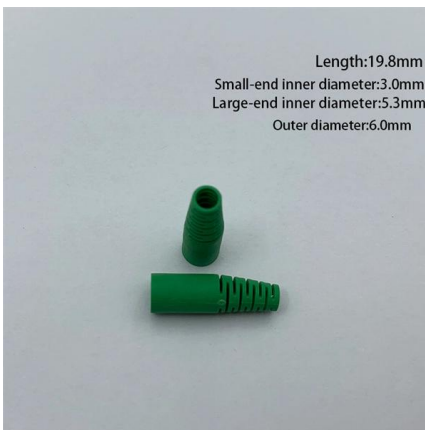
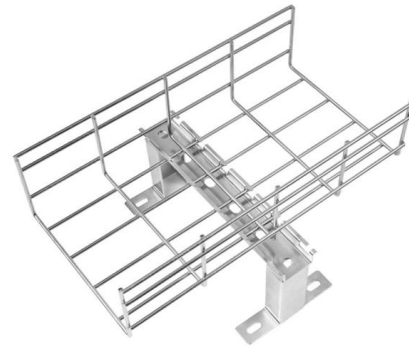
How to Use an Ethernet Cable Splitter: The Ultimate

Learn how to efficiently split an ethernet cable using a splitter with this ultimate guide. Connect multiple devices using a single network cable.



The FOA Reference For Fiber Optics

Testing a splitter or other passive fiber optic devices like switches is little different from testing a patchcord or cable plant using the two industry standard tests,



How to Connect a Splitter to Another Splitter: A

In this guide, we'll explain how to safely connect a splitter to another splitter, covering both fiber optic and coaxial setups. We'll also share tips to

How Do I Connect a Splitter to My Modem: An Essential Guide for

In today's modern age, a stable and reliable internet connection has become a necessity for most individuals. Whether it is for work, entertainment, or staying connected with loved ones, a



Troubleshooting Optical Splitters , ICT Solutions & Education

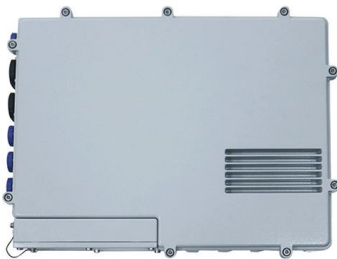
Optical splitters in the outside plant (OSP) are used mostly in passive optical networks (PONs) for fiber-to-the-user (FTTx) networks, and are often overlooked as failure points. In this article I focus on a





How to Use a Cable Splitter - Step By Step Guide

However, using a cable splitter requires proper understanding to ensure that your cable signal is not weakened. In this guide, we will take you through the step-by-step process of using a



How To Test A Cable Splitter

Connect the coaxial cable that's coming from the cable service to the splitter's input port. Then, connect a shorter coaxial cable from one of the splitter's output ports to a TV or other device that can receive

Contact Us

For datasheets, pricing, or custom telecom energy solutions, please visit:
<https://www.koskolong.co.za>