



Adam Tas Corridor Energy

How to configure a dual-network aggregation switch





How to configure a dual-network aggregation switch



UniFi link aggregation: the ultimate guide , UniHosted

This guide covers link aggregation--what it is, why you need it, how to set it up, and key troubleshooting tips.

Link Aggregation: Static vs Dynamic, LACP, and MLAG

Understand how link aggregation (LACP, MLAG, static vs dynamic) improves bandwidth and redundancy. Learn configuration steps on Cisco and



50KW modular power converter

- Flexible Configuration**
 - Modular Design, Expanding as Required
 - SmartLogic, 100% In-Service
 - Installed in Parallel for Expansion
- Powerful Function**
 - Support PVI-ESS
 - Grid Support, Equipped with DVC Technology
 - On-Grid and Off-Grid Operation
- Reliable Protection**
 - Outdoor IP55 Design
 - Sufficient Protection Functions Equipped

What Is an Aggregation Switch and How to Choose?

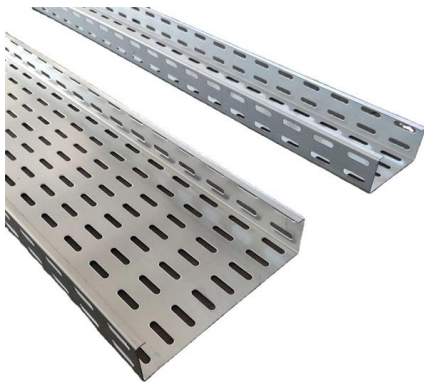
An aggregation switch is a network device that consolidates traffic from multiple access switches, wireless access points, or other edge devices and

Switching

The article explains how to set up Link Aggregation (LAG) on a switch, detailing the differences between Static LAG and LACP (Link



Aggregation Control Protocol).

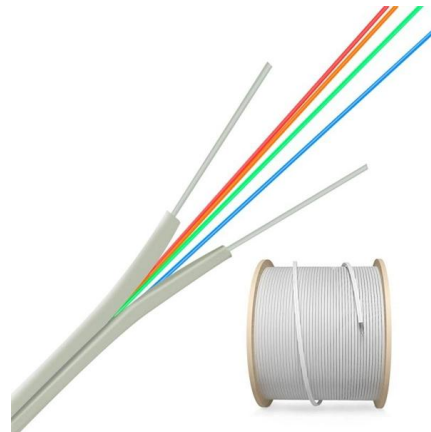


Enhance Your Network with a Link Aggregation Switch:

Discover the benefits, configuration, and best practices of using a link aggregation switch to enhance your network. Combine multiple Ethernet links into

How to team network (link aggregation) in Windows 11

Veni, vidi, vici Intel Ethernet Converged Network Adapter X710, with two 10Gbps ports. This allows to team the two ports together for link aggregation.



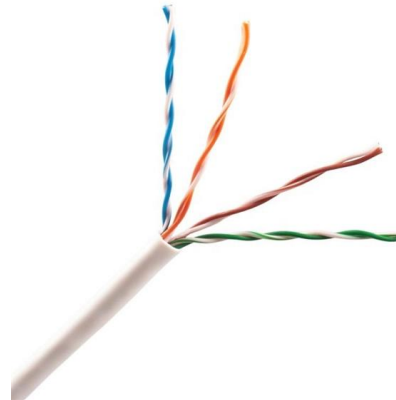
How To Set Up Switch Link Aggregation

Managed switches provide many advantages for a growing network, including support for VLANs, QoS, and Trunking. I touched on simple VLAN configuration a



How to configure Link Aggregation on Cisco Switch

1. Port Aggregation Protocol (PAgP) Port Aggregation Protocol is a Cisco proprietary protocol used to form an EtherChannel. There are different modes in which you can configure your interface.



UniFi

This guide covers what port aggregation / link aggregation (LAG) is and how to enable and use it within UniFi. We'll also explore what benefits it provides and whether you should be

EOS 4.36.0F

Deploying MLAG removes over-subscription by configuring an MLAG link between two aggregation switches to create a single logical switching instance that utilizes



Aruba-CX Switch

This article discusses how to configure link aggregation between Aruba-CX switches.



High quality tensile aramid yarn

Protecting the fiber core and optical signal transmission High tensile and bending strength



UniFi link aggregation: the ultimate guide , UniHosted

Link aggregation is a powerful tool that brings faster speeds, redundancy, and load balancing to your network. If you're using a NAS, file server, or multiple switches,



How To Set Up Switch Link Aggregation

I'm going to set up Link Aggregation between two gigabit switches: an 8 port Linksys SRW2008; and a 16 port Netgear GS716GT, shown in Figures 1 and 2 below. We

How do I activate Multi-Gig Internet with Ethernet port

A computer or other device that supports network connections faster than one gigabit per second Setting up your network to support Multi-Gig or "Multi





Link Aggregation and Ethernet Bonding Feature Overview and

What is Ethernet bonding? In the networking industry, link aggregation and Ethernet bonding are terms often used interchangeably as they both refer to the practice of combining multiple physical network

Data Center Aggregation Layer Design and Configuration with

Introduction This chapter covers the design recommendations for a data center design deployment consisting of a Cisco Nexus® 7000 Series Switch at the aggregation layer and a Cisco Nexus 5000



What Is an Aggregation Switch and How to Choose?

An aggregation switch is a network device that consolidates traffic from multiple access switches, wireless access points, or other edge devices and forwards it to

Configuring Trunk Groups and Dynamic Link Aggregation

Configuring Trunk Groups The Trunk Group feature allows you to manually configure multiple high-speed load-sharing links between two HP Routing Switches or between an HP Routing Switch and a



Port Aggregation Configurations

Port aggregation is useful for implementing load balancing and provides a redundant link backup. To allow port aggregation, the basic configuration on all the ports must be consistent. The following list

How to configure Link Aggregation

Link Aggregation is used to increase the available bandwidth between the firewall and a switch by aggregating up to four interfaces into a single



How to configure Link Aggregation with NETGEAR

Using the Netgear switch web administration interface to perform link aggregation between two netgear switches by Derek Falberg Step 1: Go to



Link Aggregation , DSM

Note: Link Aggregation is only available on models with at least two LAN ports. With Link Aggregation enabled, the network traffic will automatically get adjusted and



MR Link Aggregation Configuration Guide

Refer to later sections of this article to find configuration examples for some common switches. Enabling Link Aggregation For out-of-the-box configuration, bring up

How to set up switch Link Aggregation (LAG) - HeelpBook

Ideally, those switches will be connected to each other, allowing for connectivity between devices. Link aggregation, or LAG is a method of using two Ethernet



Aruba-CX Switch

Network link aggregation, also known as link aggregation control protocol (LACP), is a method of combining multiple physical network connections into a single logical connection to increase



Port Aggregation FAQs

To learn how to configure an MC-LAG setup, see this guide. Find help and support for Ubiquiti products, view online documentation and get the latest downloads.

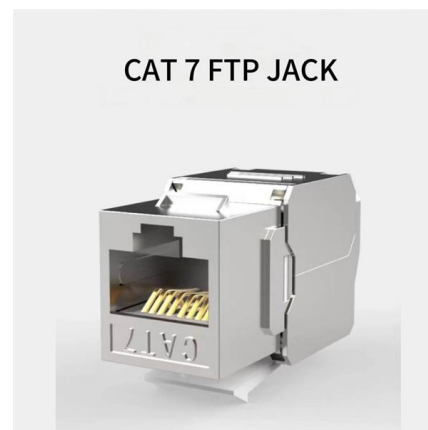


How to enable Link Aggregation (LAG) on UniFi Switches

In this article, we will take a look at when to use Link Aggregation and how to configure it on UniFi switches. Using Link Aggregation Before we are

Link Aggregation Configuration

"Campus Networks Typical Configuration Examples" provides typical campus network networking modes and a variety of deployment examples."Feature Typical Configuration Examples" provides



Contact Us

For datasheets, pricing, or custom telecom energy solutions, please visit:
<https://www.koskolong.co.za>