



Adam Tas Corridor Energy

How to connect Kubernetes to a switch



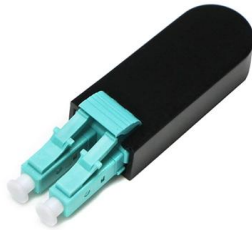


Overview

You need to have a Kubernetes cluster, and the kubectl command-line tool must be configured to communicate with your cluster. It is recommended to run this tutorial on a cluster with at least two nodes that are not acting as control plane. If so, save the current value of your KUBECONFIG environment variable, so you can restore it later.



How to connect Kubernetes to a switch



Kubectl List and Switch Context: A Complete 2500+ Word Guide

With this Kubernetes context tutorial under your belt, you're ready to simplify and enhance your kubectl workflows! Switching between clusters and namespaces will be a breeze.

How to quickly switch between Kubernetes clusters

To switch the current terminal's cluster, use the handy klctx tool (the "L" stands for local). The tool works exactly like kctx, except it sets KUBECONFIG



AWS vs Azure vs Google Cloud: comprehensive comparison for 2026

Compare AWS vs Azure vs Google Cloud on complexity, costs, vendor lock-in, and Kubernetes management. Technical comparison for engineering teams.

Communication between Nodes and the Control Plane

SSH tunnels Kubernetes supports SSH tunnels to protect the control plane to nodes



communication paths. In this configuration, the API server initiates an SSH tunnel to each node in



Install Visual Studio Code on Ubuntu 24.04 / Debian 13

Install VS Code on Ubuntu 24.04 or Debian 13 via apt, Snap, or Flatpak. Covers extensions, settings.json, remote SSH development, and

Connect Two Kubernetes Clusters: A Complete Guide

Learn how to connect two Kubernetes clusters securely and efficiently with practical steps, best practices, and essential tools for multi-cluster



Cluster Networking , Kubernetes

Networking is a central part of Kubernetes, but it can be challenging to understand exactly how it is expected to work. There are 4 distinct networking problems to address: Highly



kubectl connect to cluster: A Step-by-Step Guide

Learn how to use kubectl to connect to cluster environments, manage kubeconfig files, switch contexts, and troubleshoot common connection issues.



Accessing Clusters

To access a cluster, you need to know the location of the cluster and have credentials to access it. Typically, this is automatically set-up when you work through a Getting started guide, or

Beginner's Guide to Kubernetes Namespaces, Contexts,

Namespaces and context switching can save you." If you're working with Kubernetes, it's essential to understand Namespaces and how kubeconfig



Hardware Archives , TechRepublic

Stay current with the components, peripherals and physical parts that constitute your IT department.



Kubernetes Networking Under the Hood

Kubernetes is a powerful container orchestration system that can manage the deployment and operation of containerized applications across



K9s

K9s provides a terminal UI to interact with your Kubernetes clusters. The aim of this project is to make it easier to navigate, observe and manage your applications in

Azure Kubernetes Service dashboard template , Better Stack

This is a ready-made Azure Kubernetes Service Telemetry dashboard in Better Stack. To get it, sign up for Better Stack, connect your log or metrics source, and select one of the beautiful pre-built





How to Configure and Switch Kubectl Contexts , LabEx

You will learn how to effectively switch between different Kubernetes environments, configure custom settings, and leverage context-based workflows to enhance

GitHub

kubectx is a tool to switch between contexts (clusters) on kubectl faster, and launch readonly shells for each context. kubens is a tool to switch between Kubernetes



A visual guide to Kubernetes networking fundamentals

Networking within Kubernetes isn't so different from networking in the physical world. Remember networking basics, and you'll have no trouble enabling

Configure Access to Multiple Clusters

Configure Access to Multiple Clusters This page shows how to configure access to multiple clusters by using configuration files. After your clusters, users, and contexts are defined in



How to Manage Multiple Kubernetes Contexts and

? What Are Kubernetes Contexts? Kubernetes contexts allow you to quickly switch between different clusters, namespaces, and user credentials. If



OpenSearch Kubernetes Operator

OpenSearch Kubernetes Operator The OpenSearch Kubernetes Operator is an open-source Kubernetes operator that helps automate the deployment and provisioning of OpenSearch and



How to switch namespace in kubernetes

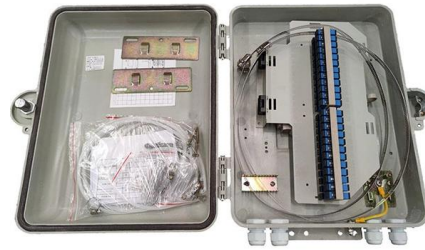
You could use the following package called kubectx which make it very easy to switch between clusters using kubectx and switching between namespaces using kubens





How to Retrieve and Apply a Kubernetes Context from a

Straight to the point. Do you want to switch between your local kubernetes cluster and a remote one for easy deployments, or for a CI/CD



30 Docker Interview Questions and Answers (2026) - Dataquest

Prepare for your Docker interview with real questions, complete answers, and code examples, organized from beginner to advanced.

Quickly switch Kubernetes cluster and namespaces

Often when working with Kubernetes you might find yourself switching between your clusters or namespaces. I am doing this numerous times



Security Archives , TechRepublic

AWS Rex Is a Big Step for Agentic AI Security, But Not the Final Layer



Configure Access to Multiple Clusters

This page shows how to configure access to multiple clusters by using configuration files. After your clusters, users, and contexts are defined in one or more configuration files, you can quickly switch



Contact Us

For datasheets, pricing, or custom telecom energy solutions, please visit:
<https://www.koskolong.co.za>