



Adam Tas Corridor Energy

How to connect the grounding wire of a mobile power distribution box





Overview

Attach a ground wire from one of the threaded studs (A) at the bottom of the housing, to the mounting plate (B). The National Electrical Code (NEC) lists eight specific methods to make grounding and bonding connections in Sec. Failure to install these connections properly can result in shock, fire, or, most certainly, power quality problems. 26 mm² (10 AWG) ground wire must be used, and in all other markets a 6 mm² must be used. Although ground wires are not required for an electric instrument to work properly, attaching the ground wire to electrical box is a norm for electricians because it provides an additional safety feature that can save your life in accidents.



How to connect the grounding wire of a mobile power distribution b



How to Connect a Portable Generator to the Home?

How to Wire a 1-P & 3-P Portable Generator to the Home Supply using Changeover & Without Changeover or Transfer Switch (ATS & MTS) for 230V/400V &

How to Ground an Electrical Panel: A Complete Guide

Learn how to ground an electrical panel step-by-step. Ensure safety, code compliance, and protect your home from electrical hazards.



The ABCs of RV Grounding and Bonding - Part 1

Part 1 today will cover how it's all hooked up according to the National Electrical Code, which also shows how the neutral and ground wires are bonded

How to Build a DIY Temporary Power Distribution Box

Securely manage job site power. Build a compliant temporary distribution box, detailing

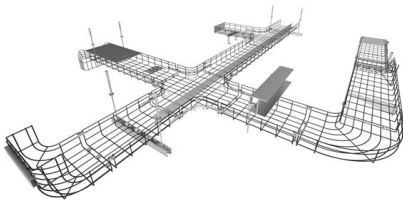


component sizing, critical grounding, and wiring integrity.



How to Ground a Mobile Home --

Proper grounding is one of the most important -- and most overlooked -- electrical safety requirements in a mobile home. Without it, a simple wiring fault can send



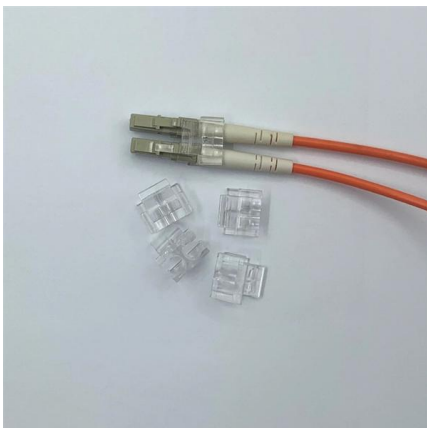
How to Run a Ground Wire to an Electrical Panel in 10

This article will tell you how to run a ground wire to an electrical panel & the importance of doing this task.



Electrical Grounding Homeowner's Guide and How It Works

Maybe you've seen, and even connected, the green "ground wire" in a DIY electrical project. Or maybe grounding is a completely new concept to you, and you're looking for a simple





The Complete Guide to Ground Rods in Electrical Systems

Figure 1: Ground rod for mobile objects like vehicles Ground rods are critical in electrical grounding systems, providing a safe pathway for excess electricity dissipating into the earth. These



How Do You Properly Ground A Mobile Home?

First off, a mobile home with proper grounding should have a physical connection between all of its electrical components to the ground. One grounding pole has to

Correct Connection Method Of Grounding Wire Of

Generally, copper core wire is selected as the ground wire and connected to the PE wiring bar. When connecting, it is necessary to strip the wire



How do you ground a plastic electrical box

Install a ground wire: If your box doesn't already have a ground wire, you need to install one first. One end of the ground wire should be connected to a



Nine Recommended Practices for Grounding

Bond all metal enclosures, raceways, boxes, and equipment grounding conductors into one electrically continuous system. Consider the installation of an



Electrical Panel Grounding and Bonding

The topic of grounding and bonding is a never ending area of confusion. The difference between a service panel and a sub panel is also muddy in many

Electrical Box Ground Wire Connectors & Connections

How to make proper & safe electrical ground wiring connections in the box: This article describes options for connecting a metal electrical box to the grounding conductor & connecting the grounding



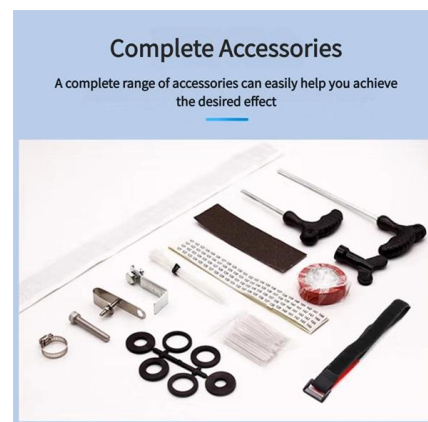


Pipe Locators, Cable Locators, Underground Utility

We sell professional-grade Pipe Locators, Cable Utility Locators, Underground Utility Locators, Underground Utility Location Tools, and Underground Pipe Locators

How To Make Proper Grounding and Bonding Connections

Knowing what connectors are available, selecting the proper connection method, having the correct tool for the job, and properly applying the



Grounding System Installation Standards for Distribution Boxes and

Whether you're a seasoned pro or just starting out, this comprehensive guide will give you practical insights into proper grounding techniques, with a special focus on how selecting quality materials



how do you ground a plastic electrical box

One end of the ground wire should be connected to a metal part of the box and the other end to the ground rod. During the connection process, you





How To Ground Your Electrical Panel and Service Disconnect

Follow this video to learn what to avoid when working on your electrical panel and service disconnect grounding .more

How to Ground an Electrical Panel: A Complete Guide

What is Electrical Panel Grounding? Electrical panel grounding means linking a system panel to the ground through earth electrode like rods and



Grounding & Bonding Temporary Generators and

Technicians often have an "Anything Goes; It's Temporary" attitude about grounding, bonding, when dealing with the installation of temporary

How To Run A Ground Wire To An Electrical Panel Box

Your service panel's ground wire prevents a line fault from becoming a shocking experience. By shunting excess line voltage back to the panel's neutral pole, the ground current



How & Why to Ground Wiring

Install grounding wire to provide a current with alternate paths to avoid electrical shocks in case of power surges. Run ground wires parallel to hot and neutral wires in a branch circuit.



What Is a Ground Wire & How It Works , TRADESAFE

What is a ground wire? Discover how it works, why it's essential for safety, and how proper grounding protects against electric current risks.

LoRa handheld portable base station



WORLD WIDE WEB JOURNAL Home

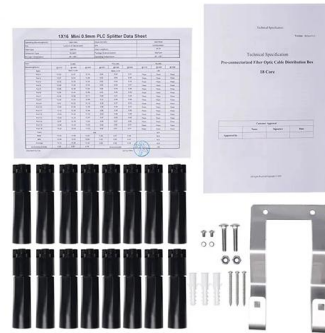
will open to start the export process. The process may take but once it finishes a file will be downloadable from your browser. You may continue to browse the DL while the export process is in





DISTRIBUTION BOX

Attach a ground wire from one of the threaded studs (A) at the bottom of the housing, to the mounting plate (B). Attach a second grounding wire from the mounting plate (B), to the factory



Contact Us

For datasheets, pricing, or custom telecom energy solutions, please visit:
<https://www.koskolong.co.za>