



**Adam Tas Corridor Energy**

# **How to connect the internal threads of cable tray elbows**





## Overview

---

The RLVL straight connector is used with the cable tray heights 85 and 110 mm. When completely installed, without damage either to conductors or structural system use maintain spacing or to keep cables in place when the tray is bent the minimum bend radius for cables as they exit the bottom of the cable tray. Hubbell's NEXTFRAME® Ladder Tray is the effective and widely used cable runway that supports and delivers bundles of cable between cabinets, racks, and closets, along walls, and suspended from ceilings. How to bend 90 degree of cable tray 3 line with the same distance :// • HOW TO BEND 90 DEGREE OF CABLE TRAY 3 LINE. All fittings are available in sizes and types corresponding to the straight cable tray sections.



## How to connect the internal threads of cable tray elbows

---

### Configuration methods A - Quiklok tray - Conne



In any project, installation time is key. Our patented QuikLok tray profile connects straight lengths of tray at record speed. The name says it all. Lengths of tray lock together in a matter of seconds with no

### Microsoft Word

Metallic cable trays shall be permitted to be used as equipment grounding conductors where continuous maintenance and supervision ensure that qualified persons service the installed cable tray system



### 30° Vertical Elbow , Cable Tray Systems , PUPCO

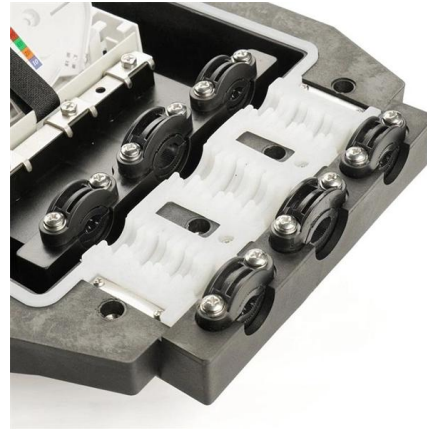
Discover our 30° Vertical Elbow for cable tray systems. Seamlessly transition between sections and fittings, reducing tray width. Contact us today!

### HOW TO FABRICATE ( INSIDE ELBOW )AND( OUTSIDE ELBOW )

How to bend 90 degree of cable tray accurate to joint and support with 22.5 degree offset o HOW



TO BEND 90 DEGREE OF A CABLE TRAY AC

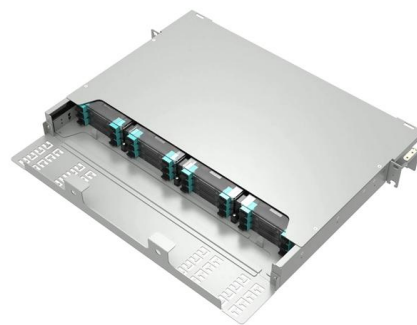


### Cable Tray Installation and Cable Handling Method

Cable tray supports should be strategically positioned so that connectors between horizontal straight sections of the tray fall between the support point and the

### Cable Tray Technical Guide A practical guide to product selection and

Cable Tray Technical Guide A practical guide to product selection and installation This guide for engineers and installers has been developed by ABB as a practical reference regarding cable tray



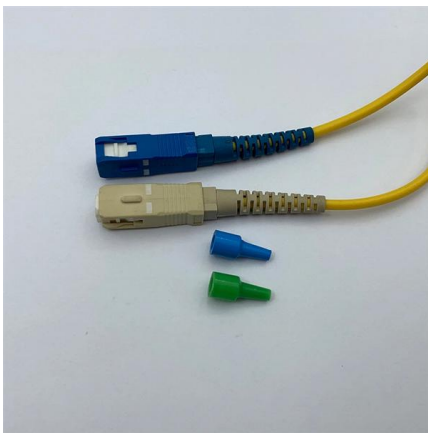
### Complete cable tray manual for electrical engineers and

A spread sheet based wiring management program may be used to control the cable fills in the cable tray. While such a system may also be used for controlling



## Cable Tray Systems: Requirements and Best Practices

Comprehensive guide to cable tray systems requirements: tray types, materials, loading, supports, bonding, routing, and best practices for safe electrical cable management.



## 30° Horizontal Elbow , Cable Tray Systems , PUPCO

Discover our 30° Horizontal Elbow for cable tray systems. Seamlessly transition between sections and fittings, reducing tray width. Contact us today!

## Fiber Cable Tray System

Installation and maintenance of cable tray wiring systems should be performed by a minimum of two qualified technicians. For the purposes of this guideline, a qualified technician is one who is familiar



## Cable Tray / Trough Tray INSTALLATION

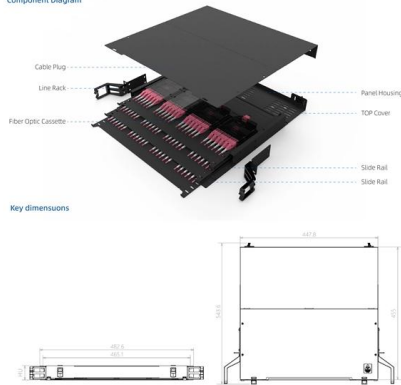
) To install: place 1 part of cover clamp around trough tray cover and tray assembly. Place 2nd part around opposite end of Trough Tray, align clamp holes and install hardware.



## Fiber Cable Tray System

TRAY ASSEMBLY transitional fittings. When connecting any two tray components together, simply insert each into the coupler and push until fully in. Ensure that both components are flush against the

Component Diagram



## Cable Tray Technical Guide A practical guide to product selection and

Cable tray is considered to be a system. It must provide continuous support for cables, and the electrical continuity of the cable tray system must be maintained.

### Pre-Terminated Patch Panel

- Standard 19" width
- Max 144 fibers in 1U
- MPO/Fusion Dual-Purpose



## Document DICOS

A channel cable tray can be added to an existing cable tray system using the method illustrated in Figure 3-89 to add approved cabling systems. Refer to the loading information of the existing cable





## Best Practice Guide to Cable Ladder and Cable Tray Systems

This guide covers cable ladder systems, cable tray systems, channel support systems and associated supports intended for the support and accommodation of cables and possibly other electrical

## Vertical Cable Support Elbow , Ladder Trays , Cable Tray and Reels

The aluminum I-beam design of ITray is perfect for industrial installations with large diameter cables in long span situations, minimizing total tray width and creating a smooth transition between straight



## How to Produce Cable Trays: A Comprehensive Guide

Discover the detailed process on how to produce cable trays, covering everything from material selection to assembly and surface treatment.

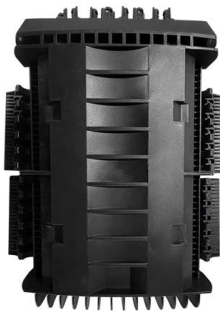
## Cable Tray Fitting Accessories

Some common cable tray fittings include elbows, tees, crosses, bends, risers, reducers, bolts, nuts, locks, expansion screws, supporting brackets, suspension



## CABLE TRAY SYSTEMS GUIDE

Some applications may require the cable tray to support the weight of a single, dead object in addition to the cable loads. Specifications typically require this to be applied at the midpoint of the span between



### Professional Cable Tray Elbow Making , Metal Fabrication Tutorial

Professional Cable Tray Elbow Making , Metal Fabrication Tutorial Learn how to make cable tray elbows professionally with step-by-step guidance. This video shows metal fabrication techniques, DIY



### Mounting instructions

Electrically trained specialists charged with installing cable support systems and cable trays. These instructions are based on the standards valid at the time of compilation (12/2023). Please read the





## CABLE TRAYS

Vari-cleat cable cleats are available for trefoil single and bundled cable applications where moderate levels of short circuit withstand are required. The unique patented compact design allows the



## CABLE TRAY, CABLE LADDER, CABLE TRUNKING CATALOGUE

Fitting and accessories, with the same or different width of the cable run. All fittings are available in sizes and types corresponding to the straight cable tray sections. These fittings include: elbow,



## cable tray system

A cable tray system is an assembly of metallic cable tray sections and accessories, that forms a rigid structural system to support cables.



## Cable Tray / Trough Tray INSTALLATION

The cable tray system being supported. Structural building members should never be cut, and cable trays should not be installed in hoist way or where subject to physical damage. Cable tray systems are to





## 90° Vertical Elbow , Cable Tray Systems , PUPCO

Discover our 90° Vertical Elbow for cable tray systems. Contact us today for availabilities and receive a quote. Fast shipping guaranteed



### Guide to cable support systems

Widths of 8 and 15 millimetres enable flexible adjustment to different cable trays, cable ladders and cable volumes. With the help of the matching SBV tightening strap locks and 576 spring chuck, the

### INSTALLATION GUIDE

Vertical cable tray elbows at the top of runs should be supported at each end. At the bottom of runs, they should be supported at the top of the elbow and within 610 mm (24") of the lower extremity of the



## Contact Us

---

For datasheets, pricing, or custom telecom energy solutions, please visit:  
<https://www.koskolong.co.za>