



Adam Tas Corridor Energy

How to connect voltage to a relay protection tester





Overview

The steps for operating a relay protection tester can be divided into the following stages: □ Preparation: ⇒Make sure the tester is connected to a 220V AC power supply and is reliably grounded. ⇒Start the tester, select "I accept" and confirm, and wait for the system to. Secondary injection testing simulates fault conditions by injecting test signals directly into the relay's input terminals. The relay tester is the best device for checking the operability of these protective devices.



How to connect voltage to a relay protection tester

How to Use the Relay Tester?

The article will show you the steps on how to perform a relay test, using the relay protection test as an example and introducing the 3 phase relay test set's main features.



How To Test a Relay With a Multimeter?(All Types

How do you test a relay with a multimeter? Check the resistance of the coil and continuity between the terminals of the switching side using the multimeter.



The Relay Testing Handbook - Electrical Engineering

The Relay Testing Handbook is a practical resource written by a relay tester for relay testers; it is a comprehensive series of practical instructional manuals that

How to Use the Relay Tester?



The most important thing in electrical engineering is to ensure that the protective relays are always functioning correctly because that is the first condition for both the safety of employees



How to Conduct Relay Protection Testing and Troubleshooting: A

Relay protection systems are the unsung heroes of electrical networks. They safeguard equipment, prevent outages, and ensure the stability of power systems by detecting faults and

Voltage in Series and Parallel Circuits What You Need

Change in voltage series or parallel circuits: voltage splits in series, stays the same in parallel. Understand how this affects circuit design and safety.



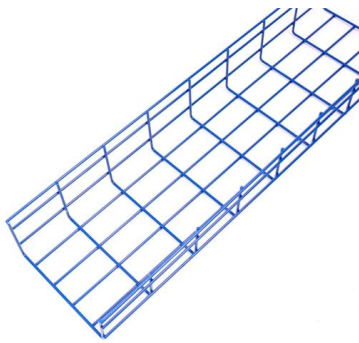
Relay Testing Procedures , Delgado Relay Protection Reference

Documentation and Reporting: The final step in relay testing procedures is comprehensive documentation and reporting of the test results. All relevant data, including the relay



How to Perform Pre-Fault State Testing with a Three-Phase Relay

According to the test requirements, connect the voltage, current, and control circuit terminals of the three-phase relay protection tester to the corresponding terminals of the relay



Relay Testing Procedures Guide , PDF , Electric

This document provides step-by-step procedures for testing various types of relays, including undervoltage, overvoltage, synchronizing, overcurrent, loss of

Fundamentals #4: How to Test Voltage Elements Inside

The How to Test Voltage Protection in IEDS/Relays Online Training Seminar shows you how to connect, understand, and test Over- and Under



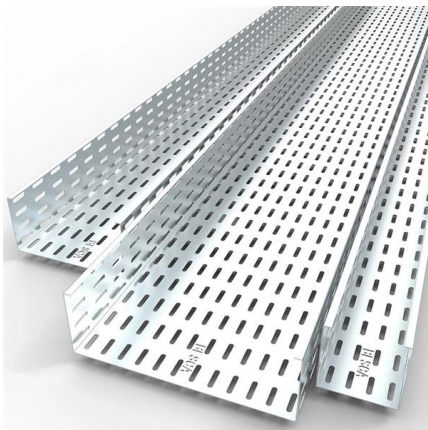
How to operate a relay protection tester?

The steps for operating a relay protection tester can be divided into the following stages:
Preparation: ?Make sure the tester is connected to a 220V



How to Conduct Relay Protection Testing and Troubleshooting: A

Apply Test Voltage: Use an insulation tester to apply a high voltage (typically 500V or 1000V) to the relay terminals. Measure Resistance: Ensure the insulation resistance meets the

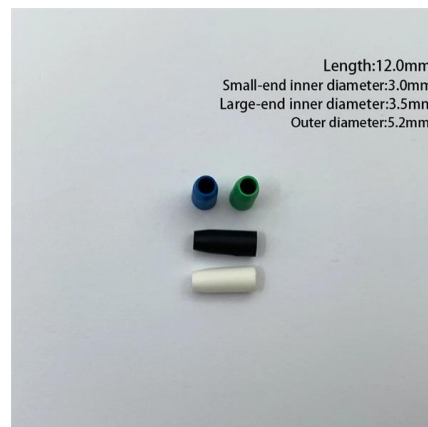


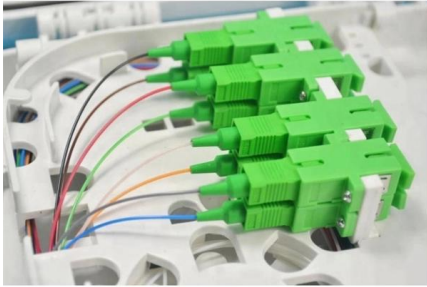
The Relay Testing Handbook: Principles and Practice

The complete handbook combines basic electrical fundamentals, detailed descriptions of protective elements, and generic test plans with examples of real-world applications, enabling you to confidently

How to Perform an In-Service Protective Relay Meter Test

Online meter testing is the ONLY way you can make sure the relay is correctly connected to the power system, and this post will help you perform an effective



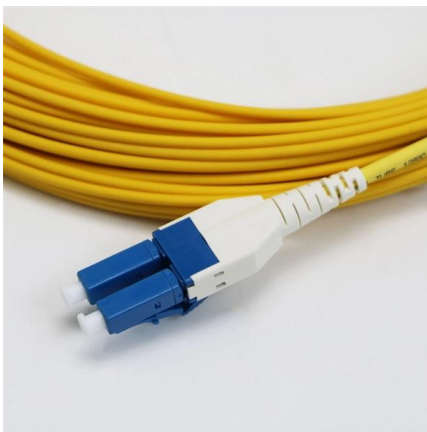


Three-Phase Relay Protection Tester - Test Methods

Wiring Configuration: Connect the three-phase current and voltage output terminals of the tester to the corresponding input circuits of the protection

Protection Relay Testing and Commissioning

This will typically involve verification of the protection relay watchdog circuit, exercising all digital inputs and outputs and verifying that the protection relay analogue inputs are within calibration by using a



Relay Protection Tester

Our relay protection tester offers comprehensive testing for both optical digital and traditional protective devices. It's ideal for power plants, substations, equipment manufacturers, and institutions needing

How to Test Protective Relays Correctly

You can get passes on your test sheets AND find out if the CTs and PTs are connected to the relay correctly by connecting your test-set to the relay, using the



Focus creates quality products

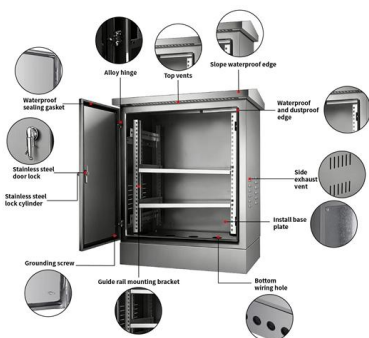


Six Phase Relay Protection Tester

Our Six Phase Relay Protection Tester is an advanced and versatile tool designed for thorough testing and calibration of protection relays in complex power

3 Phase Relay Tester User Manual

35kv lockout circuit test : Parameters such as the right, the rated current value is 5A, blocking voltage (line voltage) is 40V, check the operating time and protection reclosing action, contact the ABC three



Wiring instructions for relay protection tester

In order to ensure the accuracy of the test, the outer loop of the protection device should be disconnected, and the voltage N and the current N should be at the same common ground.



Contact Us

For datasheets, pricing, or custom telecom energy solutions, please visit:
<https://www.koskolong.co.za>