



Adam Tas Corridor Energy

How to ground the busbar in the distribution box





Overview

Attach a ground wire from one of the threaded studs (A) at the bottom of the housing, to the mounting plate (B). 26 mm² (10 AWG) ground wire must be used, and in all other markets a 6 mm² must be used. Welcome to my channel! In this video, I am going to show 3 phase panel board internal bus bar connection diagram. A busbar trunking system consists of busbars supported and insulated by materials and enclosed in a pipe or similar casing.



How to ground the busbar in the distribution box



CMU School of Computer Science

çϕ-- bowls èì~ bowls ç¥"æ^ì box ç>'å box ç>'å
boxes ç®± boxes æ<³å?» boxing å>½æoe⁻
boxing ç".å© boy å©å boy ç".å < boyfriends ç".
boyfriends è?²å° boyhood ç".å© boys ç".ç"? boys
å½çæEUR brac

Electrical Panel Grounding Diagram and Wiring Setup

Learn how to create an electrical panel grounding diagram, ensuring safe and correct grounding connections for your electrical system.



Cable Junction Boxes: 8 Types, Tech Specs & Installation

Understanding Box Structure: Key Components & Installation Details When you look at the structure of a European-style

IEC 61439 Busbar Standard: A Guide to Low-Voltage

Figure 1: Busbar Standard Scope of IEC 61439
The IEC 61439 standard applies to busbar



assemblies that will be installed in electrical



Ground Bus Bar: Code-Compliant Selection & Sizing

Learn what a ground bus bar is, how to size and select one, and how to install it to NEC/UL/TIA best practices for panels, racks, and telecom rooms.

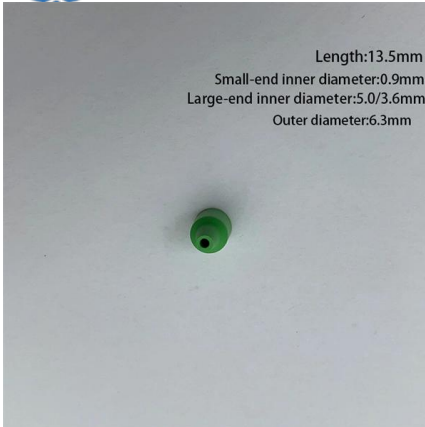
Correct Connection Method Of Grounding Wire Of

Open the distribution box and find the position marked with the grounding plate or PE letter. This position is the connection point of the grounding



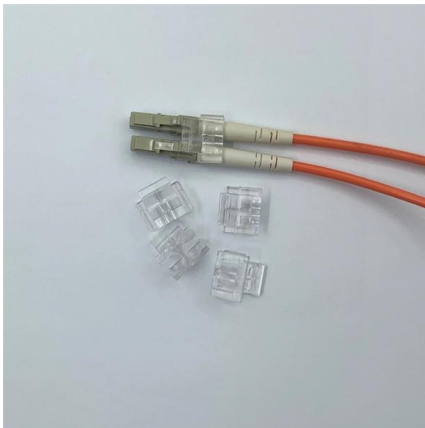
Grounding Distribution Panel Earth Busbar using 'split' cable?

So my question is whether it is ok to split the wire strands in the 10mm² ground wire into 2 separate bundles and insert each of them into a separate screw hole in the same earth busbar?



What Is a Busbar?

Learn what a busbar is, its role in power distribution, and key applications in industrial electrical systems for reliable performance and simplified maintenance.

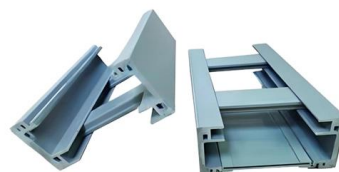


Wikipedia:Vital articles/List of all articles

Explore a comprehensive list of vital articles on Wikipedia, covering diverse topics and essential knowledge for readers.

Switchboard

Main busbar - busbar to which one or more distribution busbar, incoming unit or outgoing unit can be connected
Distribution busbar - busbar in



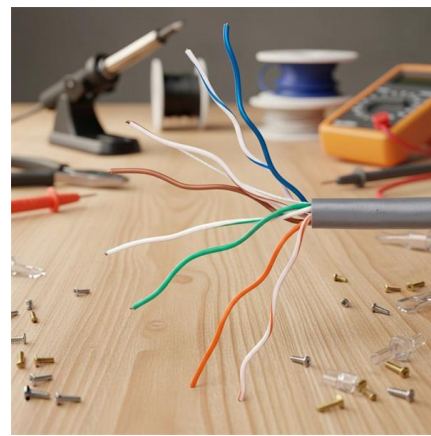


3 Phase Panel Board Connection Internal Busbar , Distribution Board

In this video, I am going to show 3 phase panel board internal bus bar connection diagram. 3 phase wiring connection including breakers installation, neutral and earthing (grounding wire)

directory-list-2.4.txt/directory-list-2.4.txt at main

Customer stories Events & webinars Ebooks & reports Business insights GitHub Skills



How to Wire a Busbar for Safe Power Distribution

The primary function of a busbar is to provide a single, organized point for distributing electrical current, serving as either a positive power block or a negative/grounding point.



How to Wire Solar Panels to Breaker Box: Complete

Learn how to safely wire solar panels to your breaker box with our comprehensive guide. Includes NEC compliance, safety procedures, and step-by



How to Wire a 50A, NEMA 14-50 Heavy-Duty EV

Terminals There are four terminals in a 14-50R receptacle: G Terminal ("G" Green screw): Indicates the Equipment Ground Conductor (EGC), and connects to the



3 Phase Panel Board Connection Internal Busbar

In this video, I am going to show 3 phase panel board internal bus bar connection diagram. 3 phase wiring connection including breakers installation,



Three Phase Distribution Box Functions and

A three phase distribution box safely distributes and protects power for large equipment in factories, buildings, and high-demand commercial settings.





Understanding Electrical Ground Bus Bar: An Ultimate

Explore everything you need to know about the electrical ground bus bar, a critical component for safe and efficient electrical systems.



Busbars , Busbars manufacturers & supplier , Eaton

Busbars (bus bars) are integral to power distribution and serve numerous industries including automotive, industrial, and aerospace. Busbars are metal bars that can

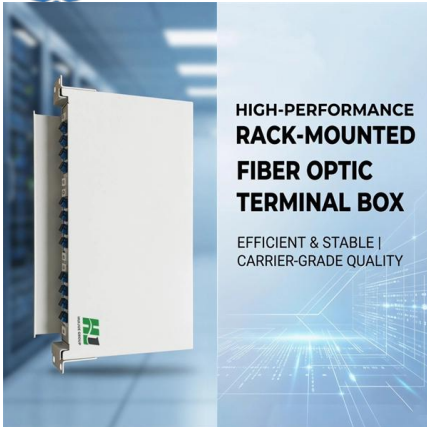
Amazon : Small Bus Bar

RECOIL BBPG5 Busbar Positive and Negative 2 x 5/16" Studs and 8 x #8 Screw Terminals Power Distribution Block with Ring Terminals Add to cart Bonsicoky 2Pcs Ground Bus Bar Terminal Block,



Grounding Requirements for Electrical Cables, Cable Trays, and Busbars

Guidelines for grounding electrical cables, busbars, and cable trays in wiring projects, ensuring safety and compliance with industry standards.



DISTRIBUTION BOX

Each DISTRIBUTION BOX and controller must be grounded. On the US market, a 5.26 mm² (10 AWG) ground wire must be used, and in all other markets a 6 mm² must be used.



Grounding Principles and Methods for DCS Systems

1. Grounding Devices in DCS Systems Operator consoles, printers, and server cabinets: Equipped with protective ground screws. Relay cabinets, U cabinets, and distribution cabinets: Equipped with

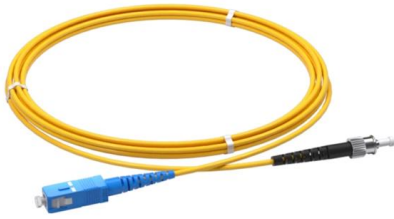
MTP MPO SC-Type Fiber Adapter



Step-by-Step Busbar Installation Guide , Artizono

Determine the best location for the busbar within the panel to ensure efficient power distribution and easy access for future maintenance. Ensure there



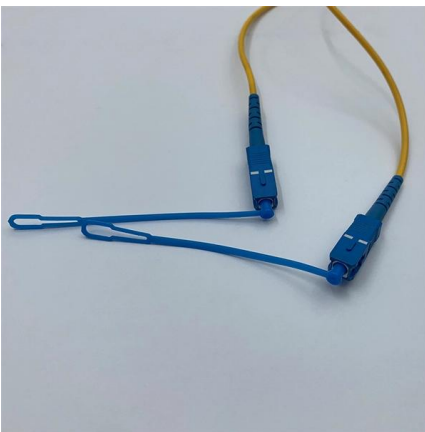


Correct Connection Method Of Grounding Wire Of

Generally, copper core wire is selected as the ground wire and connected to the PE wiring bar. When connecting, it is necessary to strip the wire

cs-178-project/imdb.vocab at main · apmalani/cs-178-project

Contribute to apmalani/cs-178-project development by creating an account on GitHub.



Grounding Requirements for Electrical Cables, Cable Trays, and

Guidelines for grounding electrical cables, busbars, and cable trays in wiring projects, ensuring safety and compliance with industry standards.

Contact Us

For datasheets, pricing, or custom telecom energy solutions, please visit:
<https://www.koskolong.co.za>